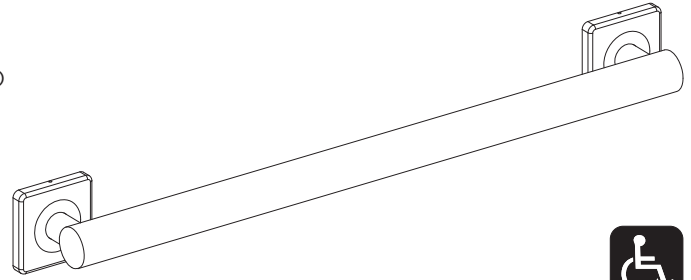




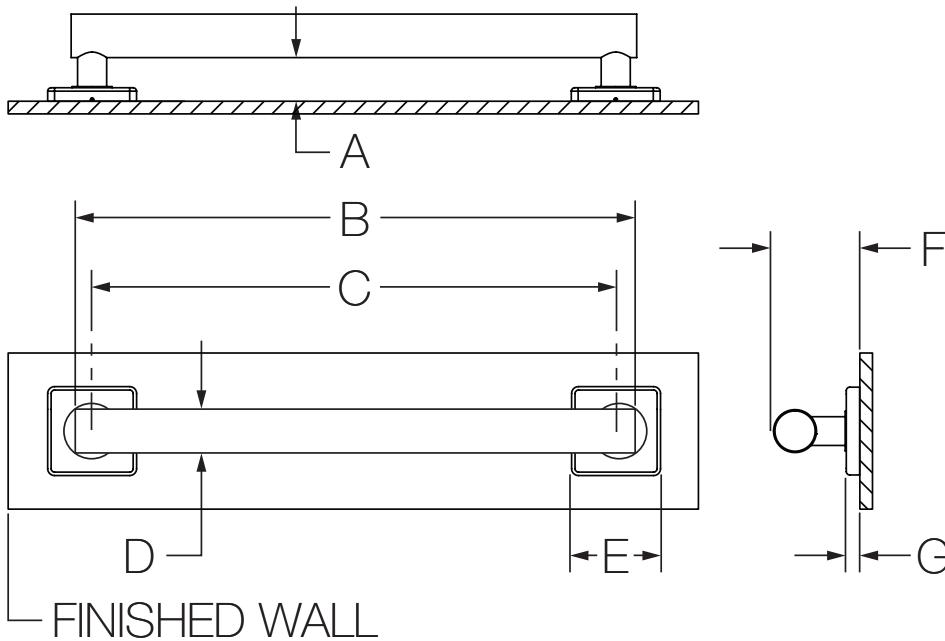
Location:



363GB-12 (18, 24, 36, 42)
 ADA Grab Bar Series
Specification Submittal

| Model Numbers | Specification |
|--|---|
| <input type="checkbox"/> 363GB-12 12" Grab Bar for ADA Applications <input type="checkbox"/> 363GB-18 18" Grab Bar for ADA Applications <input type="checkbox"/> 363GB-24 24" Grab Bar for ADA Applications <input type="checkbox"/> 363GB-36 36" Grab Bar for ADA Applications <input type="checkbox"/> 363GB-42 42" Grab Bar for ADA Applications | <ul style="list-style-type: none"> • Supports up to 250 lbs. • 1-1/2" bar diameter • 3" flange diameter • Bar extends 1-1/2" from wall • Concealed mounting for a clean look • Meets WW-P-541/8B Federal Specification for Manufacturing • Meets ADA load requirements when properly installed • Stainless steel construction |
| Finish Options | Warranty |
| <input type="checkbox"/> -STN <i>Satin Nickel finish</i> Note: Append appropriate -suffix to model number. | Limited Lifetime - to the original end purchaser in consumer/residential installations. 5 Years - for industrial/commercial installations. Refer to www.symmons.com/warranty for complete warranty information. |

Dimensions



| Measurements | |
|--------------|--------------------------------------|
| A | 1-1/2", 38 mm |
| B | 13-1/4", 337 mm (363GB-12) |
| | 19-1/4", 489 mm (363GB-18) |
| | 25-1/4", 641 mm (363GB-24) |
| | 37-1/4", 946 mm (363GB-36) |
| C | 43-1/4", 1099 mm (363GB-42) |
| | 12", 305 mm (363GB-12) |
| C | 18", 457 mm (363GB-18) |
| | 24", 610 mm (363GB-24) |
| | 36", 914 mm (363GB-36) |
| | 42", 1067 mm (363GB-42) |
| D | Ø 1-1/2", 38 mm |
| E | (2x) Sq. 3-1/16", 78 mm |
| F | 3-1/16", 78 mm |
| G | 1/2", 13 mm |

Note: Dimensions subject to change without notice.