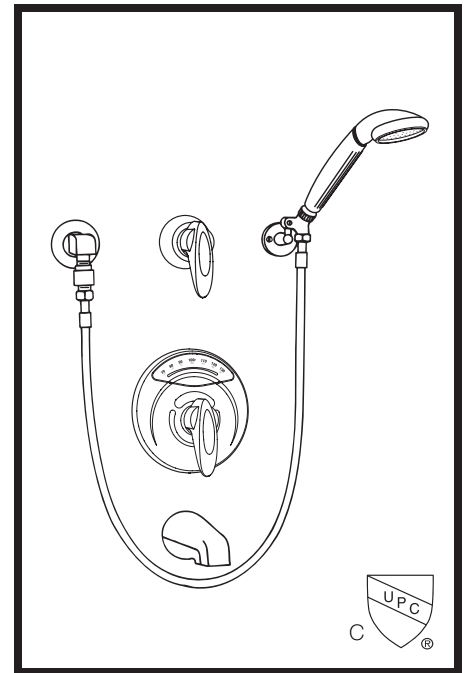


1-50VT-FS Visu-Temp® Tub and Shower System with Hand Spray

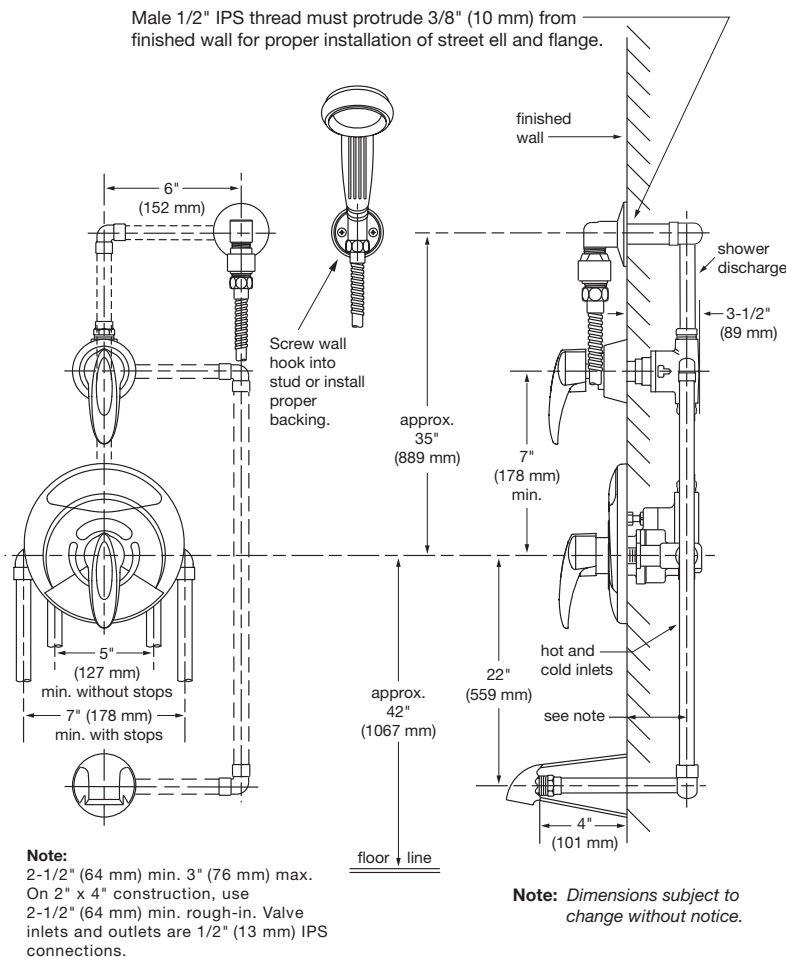
Visu-Temp Pressure-Balancing mixing valve with integral thermometer and adjustable stop screw to limit handle turn. Tub spout. Lever diverter with volume control for hand spray and tub spout. Wall/hand shower with flexible 5' metal hose, in-line vacuum breaker, wall connection and flange. Wall hook for hand shower mounting.

Modifications:

- Suffix X:** Integral service stops—allows water shut-off at valve for service
- Suffix X-3/4** 3/4" valve to increase flow approximately 20%
- Suffix 6:** 6' hose in place of standard 5' hose
- Suffix B30:** 30" adjusting bar in place of wall hook
- Suffix STN:** Satin Nickel finish



**SYMMONS PRODUCTS MEET
ASME A112.18.1/CSA B125.1
AND ALL KNOWN FLOW RATE
REQUIREMENTS.
Shower Heads and Hand Showers
2.5 GPM (9.5 L/min)**



Job/Location

.....
.....

Engineer

.....
.....

Contractor

.....
.....

This drawing to be used for rough-in installation only. All floor to center dimensions optional. Concealed piping and fittings not furnished by manufacturer. For ADA compliance (Americans with Disabilities Act) consult ADAAG or your state regulations for proper product choice and mounting locations. For complete installation, adjustment and service information see installation instructions.

Symmons Industries, Inc. ■ 31 Brooks Drive ■ Braintree, MA 02184
Phone: (800) 796-6667 ■ Fax: (800) 961-9621
Website: symmons.com ■ Email: gethelp@symmons.com

Copyright © 2016 Symmons Industries, Inc. ■ ZV-1437 REV B ■ 112816

