





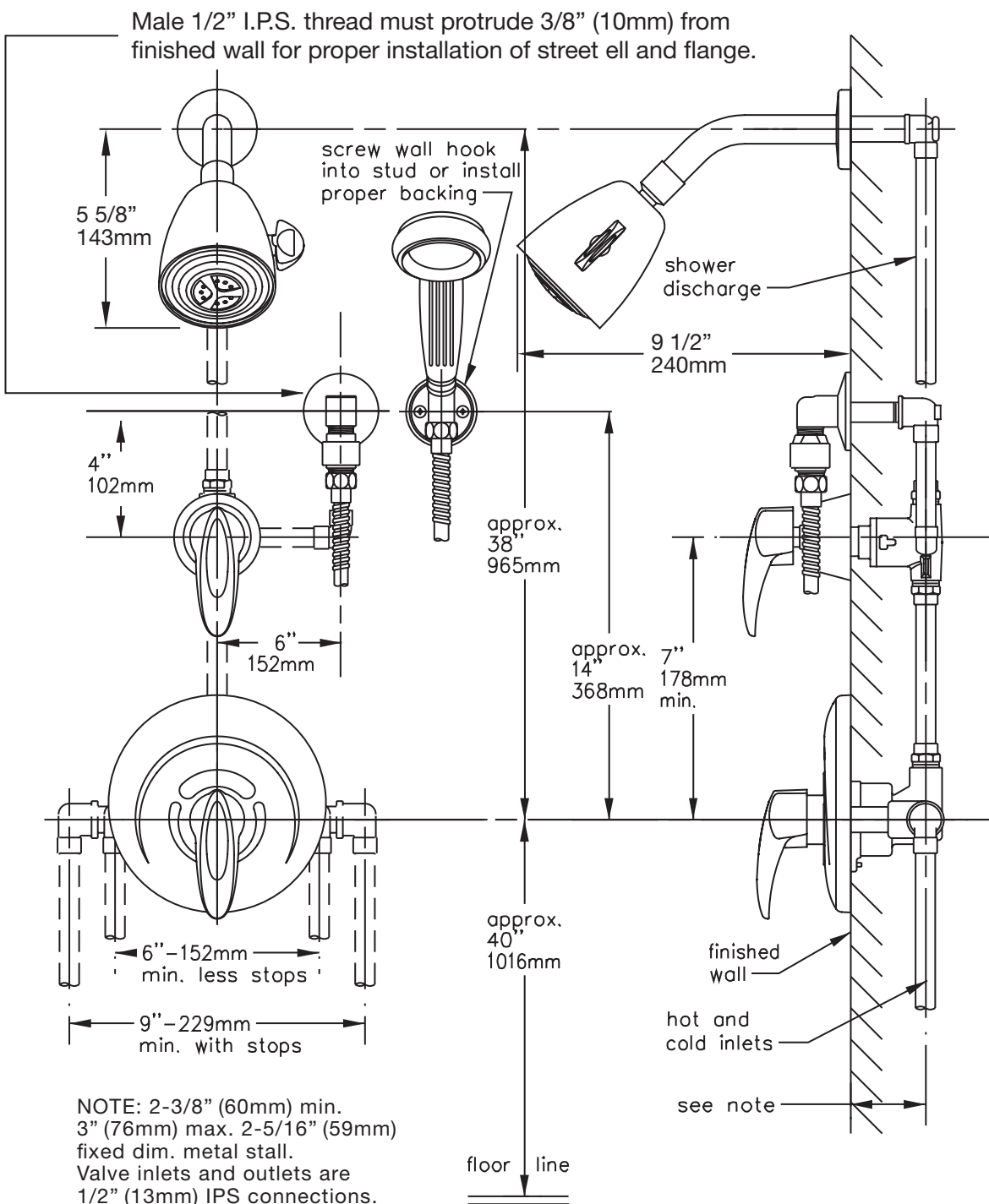
Location:



1-117-FS
 Shower Head/Hand Shower Trim
Specification Submittal

Feature Highlights	Options/Modifications
<ul style="list-style-type: none"> • Symmons tub and shower system with a lever handle • Symmons Safetymix pressure balancing mixing valve with adjustable stop screw to limit handle turn • Super showerhead, single mode with adjustable flood or mist spray, #4-231 • Lever diverter with volume control for showerhead and hand shower, #2DIV-BODY • 1 mode hand shower (white finish), with flexible 5 foot metal hose and inline vacuum breaker, #FS • Wall hook for mounting hand shower • Standard flow rate 2.5 gpm (9.5 L/min) • Polished chrome finish 	<ul style="list-style-type: none"> <input type="checkbox"/> 1.5  1.5 gpm (5.7 L/min) flow restrictor <input type="checkbox"/> 2.0 2.0 gpm (7.6 L/min) flow restrictor <input type="checkbox"/> Delete Suffix B <i>Chrome plastic escutcheon on valve with color graphic/indicators in place of standard brass escutcheon</i> <input type="checkbox"/> L1 <i>Less showerhead</i> <input type="checkbox"/> L2 <i>Less hand shower (wand only)</i> <input type="checkbox"/> L3 <i>Less showerhead and hand shower (head and wand only)</i> <input type="checkbox"/> L4 <i>Less head, arm and flange</i> <input type="checkbox"/> L5 <i>Less hand shower system (less bar/cradle, hose, wand and elbow)</i> <input type="checkbox"/> L7 <i>Less handle</i> <p>Note: Append appropriate -suffix to model number.</p>
<p>Model Numbers</p> <ul style="list-style-type: none"> <input type="checkbox"/> 1-117-FS Shower System with Hand Shower and Symmons Safetymix pressure balancing mixing valve. <input type="checkbox"/> 1-117-FS-TRM Shower System with Hand Shower Trim only, valve sold separately 	
<p>Compliance</p> <ul style="list-style-type: none"> • ASME A112.18.1/CSA B125.1 	
<p>Warranty</p> <p>Limited Lifetime - to the original end purchaser in consumer/residential installations. 5 Years - for industrial/commercial installations. Refer to www.symmons.com/warranty for complete warranty information. Go to www.symmons.com/register to register your Symmons product.</p>	

Dimensions



Notes:

- 1) Valve body and piping not included and shown as reference only.
- 2) Plaster shield (p/n T-176) for dry wall, plaster or other type walls 1/2" or greater.
- 3) All dimensions measured from nominal rough-in (see H as reference).
- 4) Dimensions subject to change without notice.