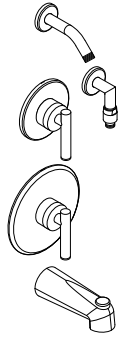




Location:



**TUB/SHOWER/HAND SHOWER TRIM**  
**MODEL: 0100-3506-SS-TRM**  
**SPECIFICATION SUBMITTAL**

**FEATURE HIGHLIGHTS**

Tub/Shower/Hand Shower Trim shall include metal lever handles, shower arm with decorative flange, hand shower coupling with flange, in-line vacuum breaker and diverter tub spout with slip spout connection. Tub/Shower/Hand Shower Trim shall be metal construction plated in standard polished chrome finish.

**COMPLIANCE**

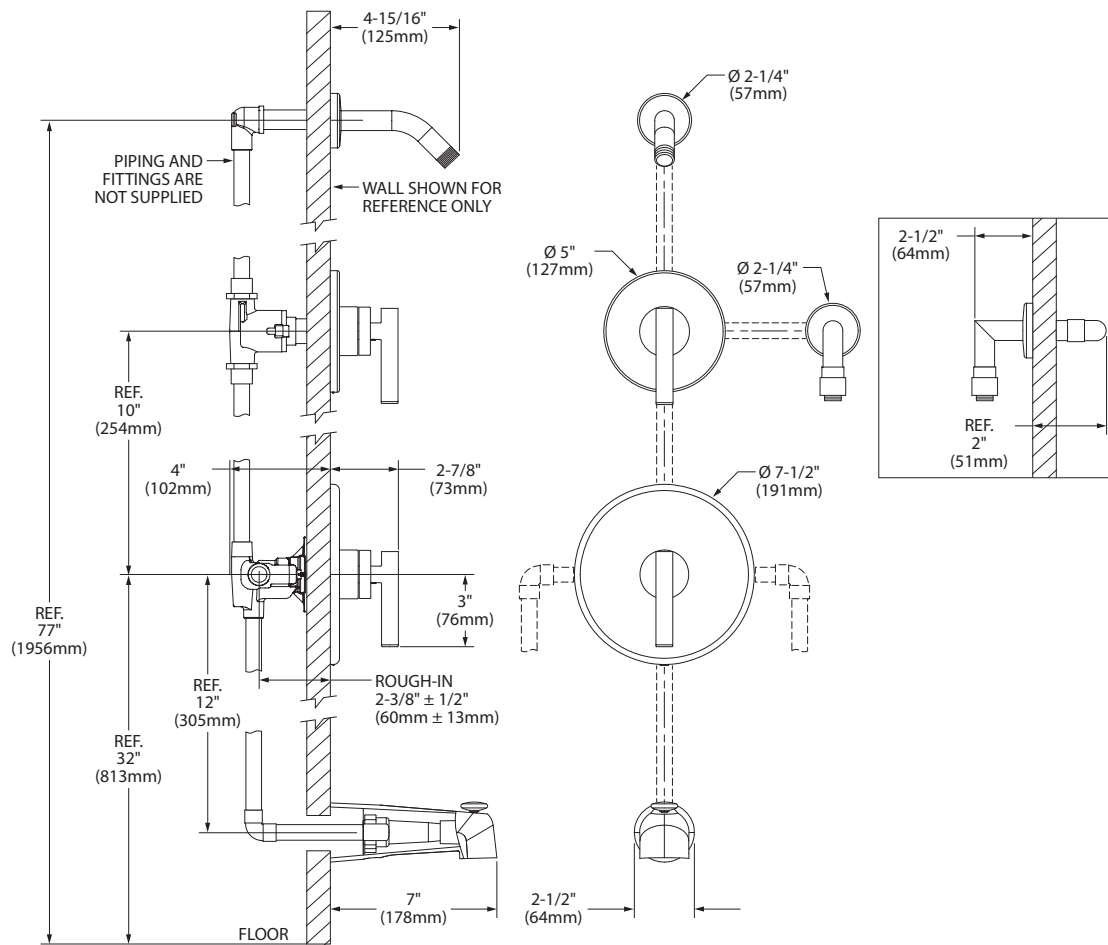
- ASME A112.18.1/CSA B125.1
- ASSE 1014 (in-line vacuum breaker for back flow protection)



**WARRANTY**

**5 Years** - for industrial/commercial installations.  
 Refer to [symmons.com/warranty](http://symmons.com/warranty) for complete warranty information.

**DIMENSIONS**



**Note:** Dimensions subject to change without notice.