



SYMMONS® Ultra-Sense®

Sensor Activated Lavatory Faucet

S-6080-SSUP

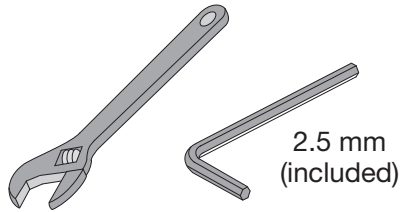
Installation, Operation & Service Instructions



Model Numbers

- S-6080-SSUP.....Single Supply Sensor Faucet
- S-6080-SSUP-G...Single Supply Sensor Faucet with grid strainer drain assembly

Tools & Materials



☎ Need Help?

Symmons customer service:
 P: (800) 796-6667, F: (800) 961-9621
 Email: gethelp@symmons.com
 Monday - Friday 7:30 am - 7:00 pm EST

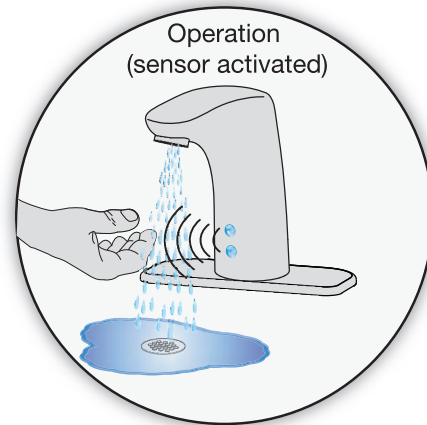
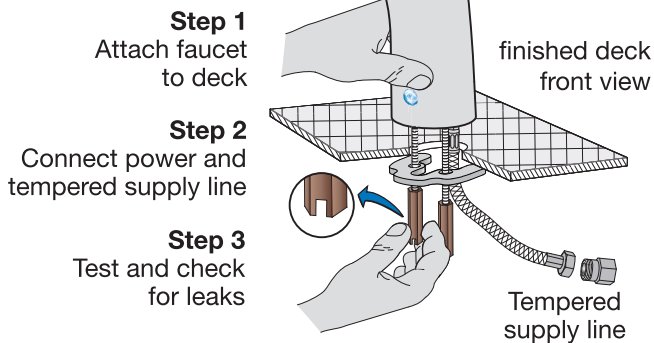
 www.symmons.com/service

- Technical help
- Product information
- Warranty policy

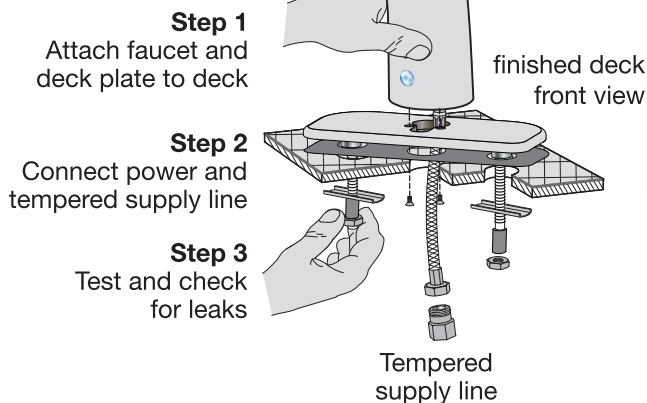


Quick Install Guide Ultra-Sense Lavatory Faucet, S-6080-SSUP

Single hole mount

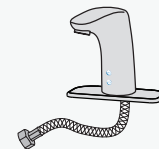


Three hole mount with deck plate



Faucet supply configuration

- 1) Tempered water preset internally (factory configured)



For California Residents

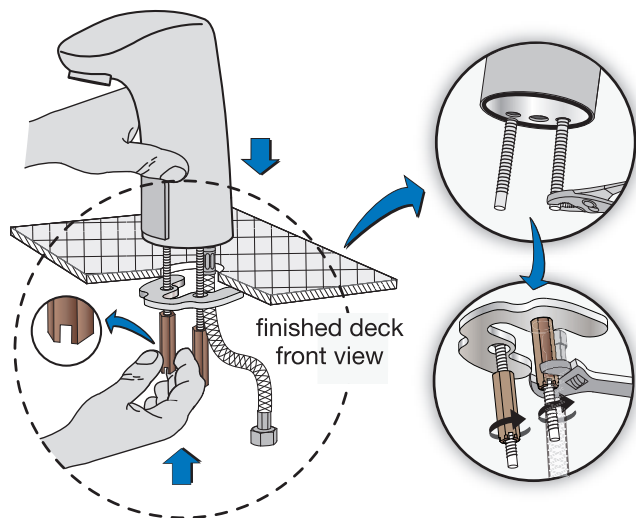
WARNING: This product contains chemicals known to the State of California to cause cancer, birth defects, or other reproductive harm.

Installation Instructions

Important! Prior to connecting the water supply, ensure supply line is flushed. Particles can clog filter and result in malfunction. Excessive particles from supply line may require installing a separate efficient filter.

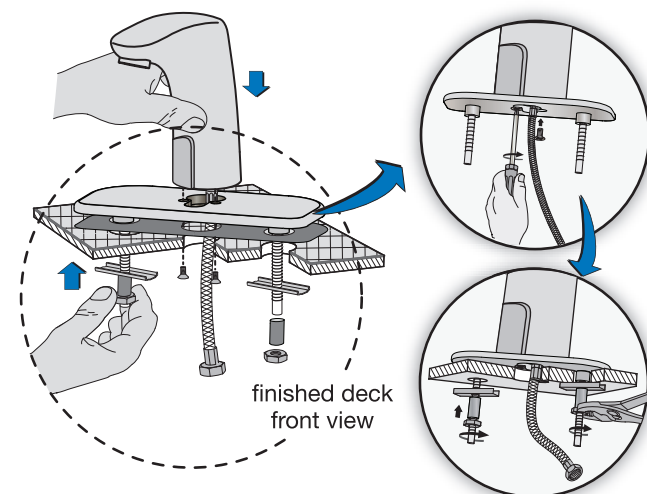
Step 1 Attach faucet to deck (1 hole)

Single hole mount without deck plate

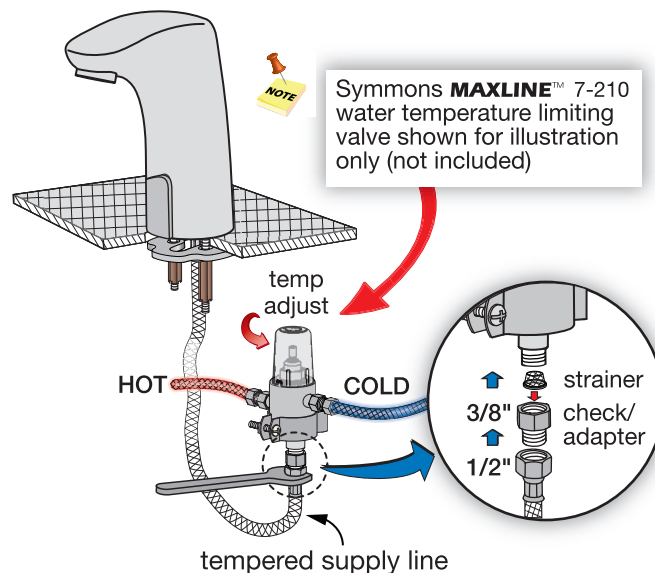


Step 1 Attach faucet to deck (3 hole)

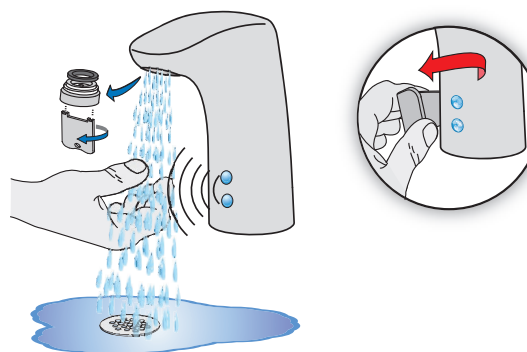
Three hole mount with deck plate



Step 2 Connect water supply line



Step 3 Test operation and check for leaks



Operation

Sensor recognition range is factory preset at 1/2 - 4 inches

Place hand under faucet, water will flow automatically for 10 seconds and shut off.



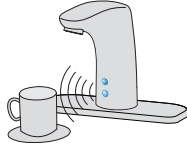
Auto shut-off time is factory preset at 1/2 to 1 second

Remove hands, water will stop automatically within 1/2 to 1 second.



Security OFF after 10 seconds

Faucet will automatically shut off after continuous water flow for 10 seconds.



Weak or dead battery

LED will flash to signal battery is getting weak and should be replaced soon.



Faucet Repair

⚠ Replacing Solenoid Valve (p/n SF-240)

- Remove old o-ring from valve body before replacing solenoid valve. Replacement solenoid valve will come with new o-ring installed to allow proper seal and prevent leaking from valve body.

Troubleshooting

Sensor eye is blinking

- Indicates battery is weak and needs to be replaced.

No water flow

- Check water supply to the faucet.
- Clean around photo cell sensor area.
- Check for loose battery connections.
- Replace the solenoid valve.
- Replace the sensor.

Water flow is weak

- Water supply stops are not fully open.
- Clean aerator and check strainer on end of supply line. Excessive clogging may require installing of separate efficient filter into supply line.

Water flow from spout fails to turn off

- Sensing range may be too low. Clean around photo cell sensor area.
- Clean solenoid valve membrane or replace solenoid valve.

Faucet care

Cleaning surface finish

- Block sensor with plastic cleaning cover to prevent faucet from turning on while cleaning.
- Clean finish area by using mild soap and water or non-abrasive cleaner and then rinse immediately. A non-abrasive wax may be used to preserve finish area.

Precautions

- Ensure sensor is not damaged through impact or scratches.
- Ensure sensor is not blocked or disturbed by any object within its detection range.
- Ensure that no strong light source is aimed directly at sensor or through a mirror.

Risk of Freezing

When installing the faucet in a location where the temperature may fall below freezing, the entire system must be drained of water to prevent damage in freezing weather.

- Turn off water supply.
- Disconnect all flexible hoses.
- Drain all parts and hoses of water.

Dimensions Ultra-Sense Lavatory Faucet, S-6080-SSUP

Note

- (1) Faucet shown with 4 inch centered deck plate.
- (2) Dimensions subject to change without notice.

Deck plate, 6" (152 mm)

Hole diameter
1-5/16" - 1-3/8"
(33 mm - 35 mm)
1/4"-20 UNC
4" (102 mm)

Strainer/adaptor, -
3/8" compression

1/2" (13 mm)
with spacer
1-1/8" (29 mm)
without spacer

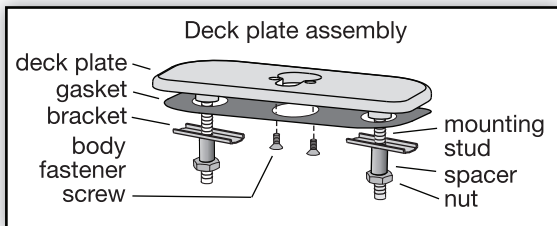
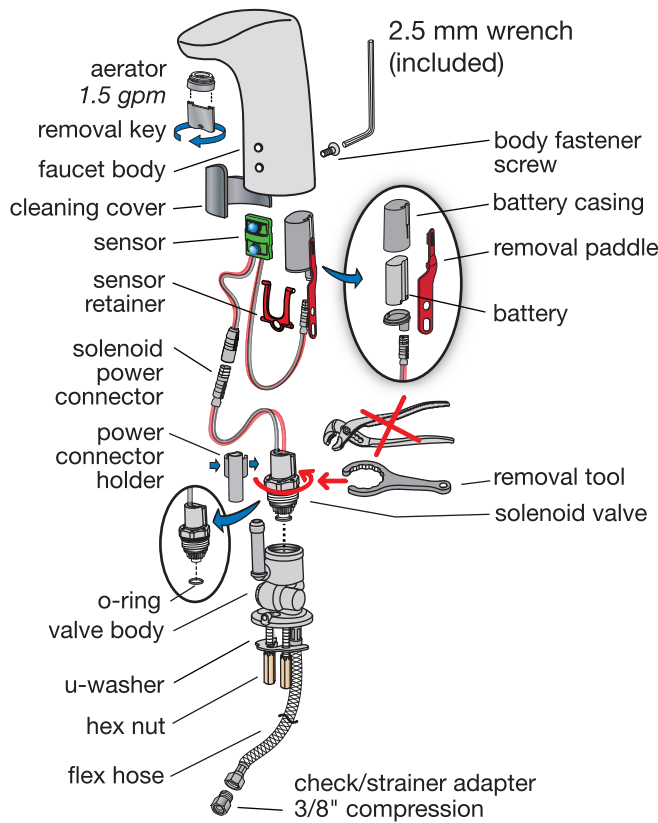
Deck plate
2-1/2"
(64 mm)

4-7/16"
(112 mm)

19"
(483 mm)

5-5/16"
19° (135 mm)

Parts Assembly Ultra-Sense Lavatory Faucet, S-6080-SSUP



S-6080-SSUP Replacement Parts	
Part Number	Item
SF-103	Battery casing with removal paddle
SF-2CR5	6v lithium battery, 2CR5
SF-240	Solenoid valve with removal tool
SF-245	Sensor and retainer
SSF-108	Check / strainer kit for flex hose connection
SF-158	Single hole mounting kit
SF-125	Aerator, vandal resistant with removal key #LL-60K ■ 1.5 gpm (5.7 L/min)
LN-100 LN-217	Non-aerated laminar flow vandal resistant spray outlet with removal key #LL-60K ■ 0.5 gpm (1.9 L/min) ■ 1.5 gpm (5.7 L/min)
SF-163	Cleaning cover

Ordering replacement parts:

Call Symmons customer service at (800) 796-6667, (781) 848-2250 M-F 7:30 am - 7:00 pm EST or check our website at www.symmons.com for a list of Symmons distributors.