



Kitchen Faucet S-2610

Installation and Service Instructions

Model Numbers

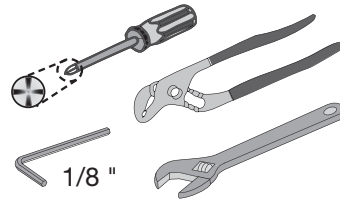
S-2610..... Kitchen Faucet

Decorative Finish Codes

Append to part numbers when applicable

- STN Satin Nickel
- STS Stainless Steel
- Chrome (standard)

Tools & Materials



Need Help?

Symmons customer service:

(800) 796-6667, (781) 848-2250

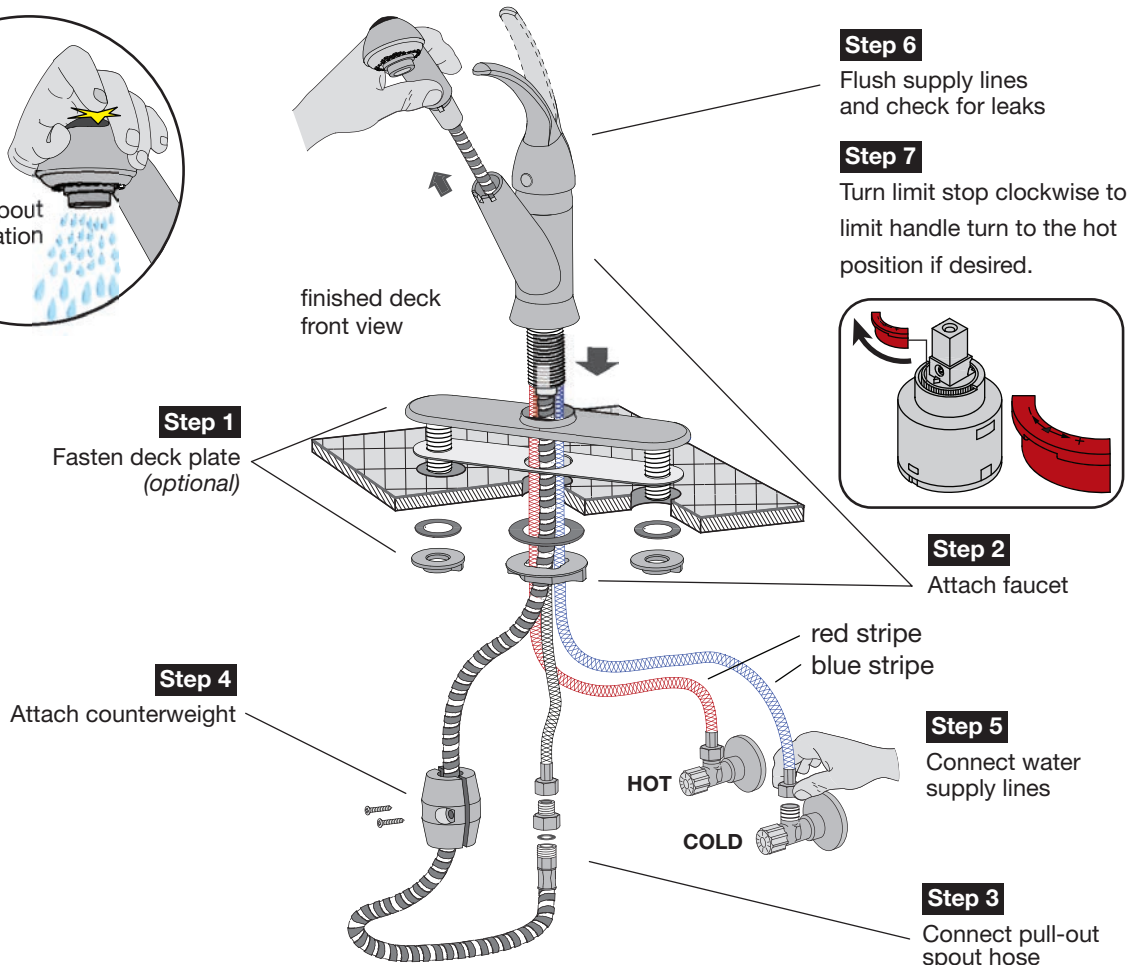
Email: customerservice@symmons.com

Monday - Friday 7:30 am - 6:00 pm EST

www.symmons.com/service

- Technical help
- Product information
- Warranty policy

Quick Install Guide *Vella Kitchen Faucet, S-2610*

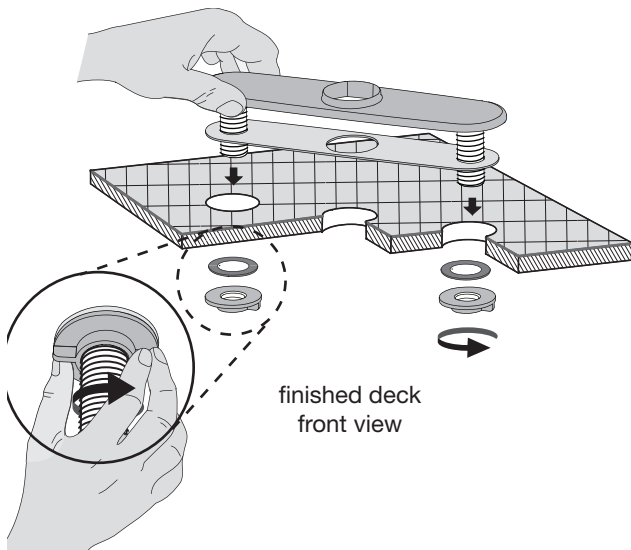


Installation Instructions

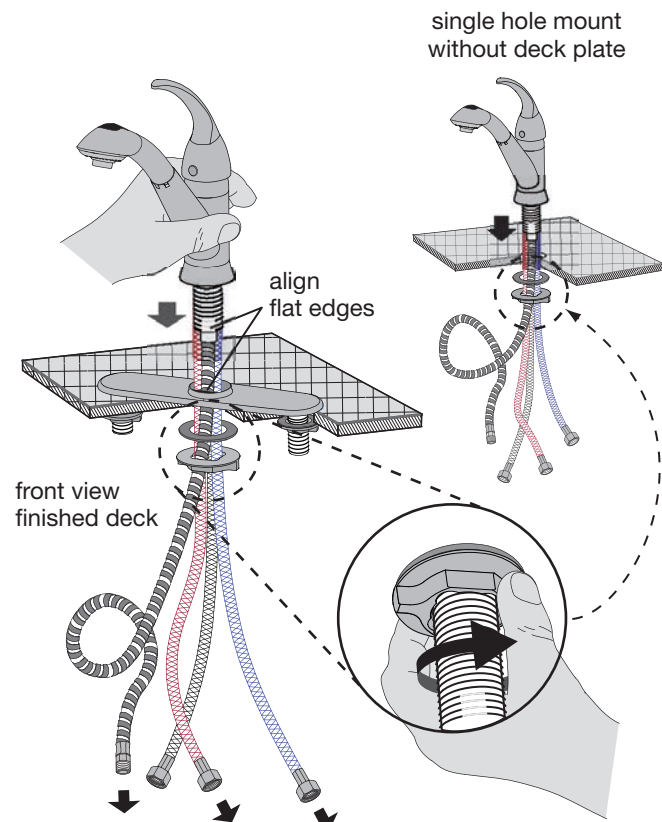
Caution: If replacing an older faucet ensure water supply is turned OFF before removing and then turn faucet handles ON to relieve water pressure.

Step 1 Attach deck plate (optional)

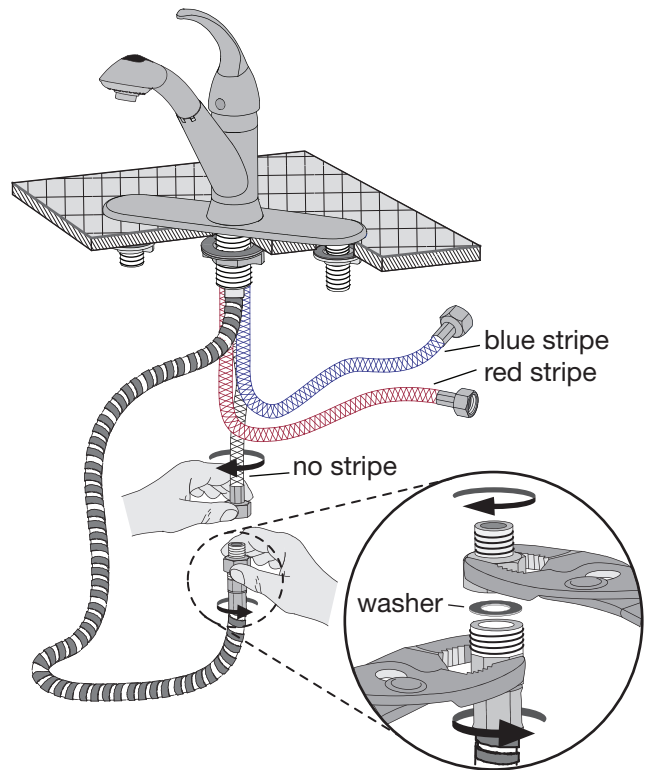
Installing deck plate is optional. Plate is typically used when replacing a faucet to cover existing holes.



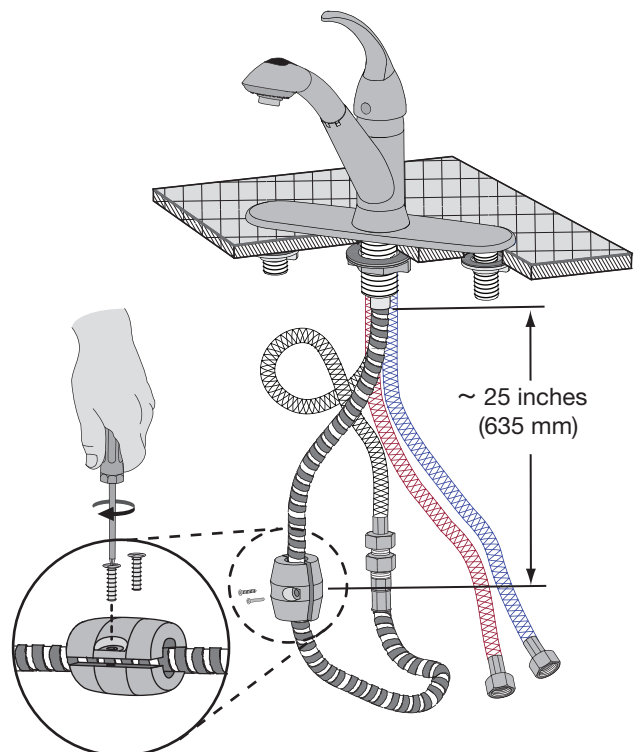
Step 2 Attach faucet assembly to deck



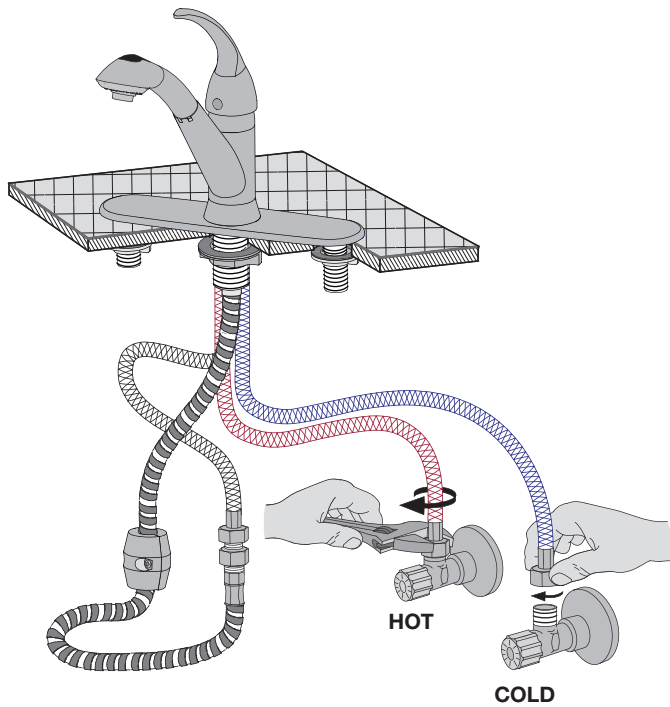
Step 3 Connect pull-out spout hose



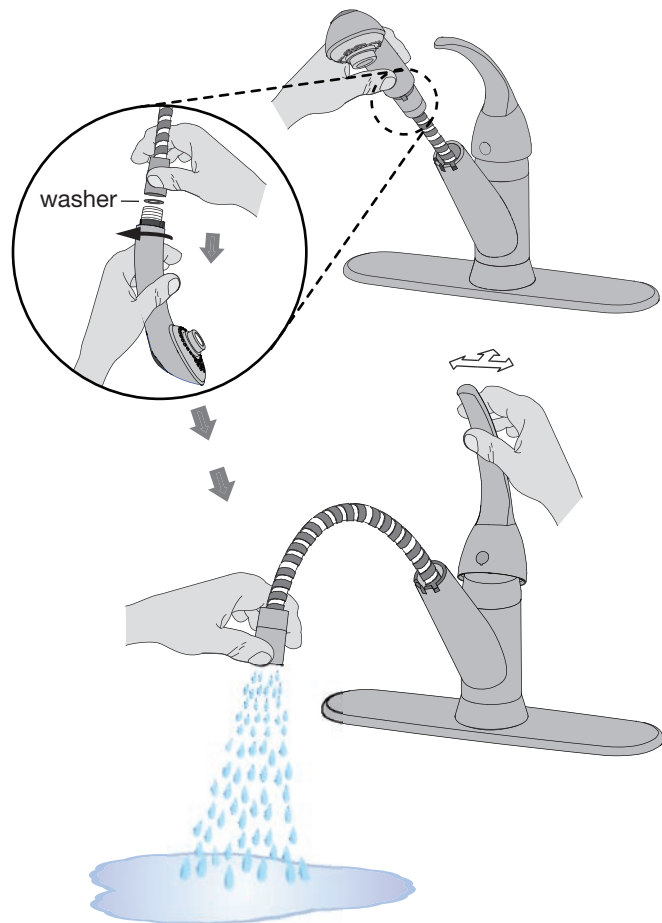
Step 4 Attach counterweight to hose



Step 5 Connect supply lines



Step 6 Flush supply lines and check for leaks

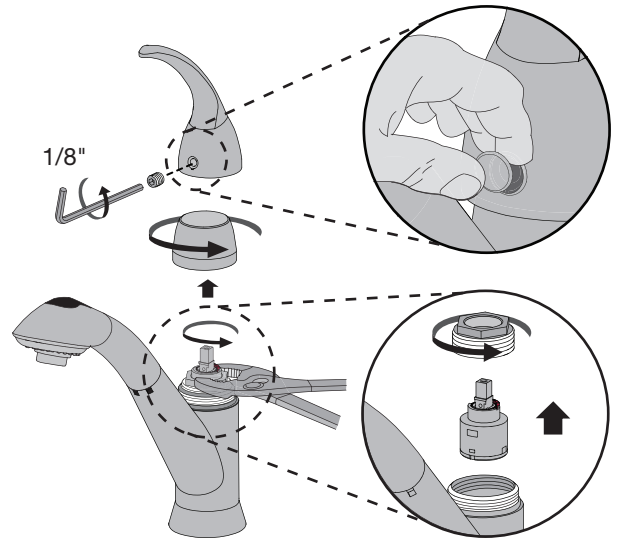


Care of faucet finish

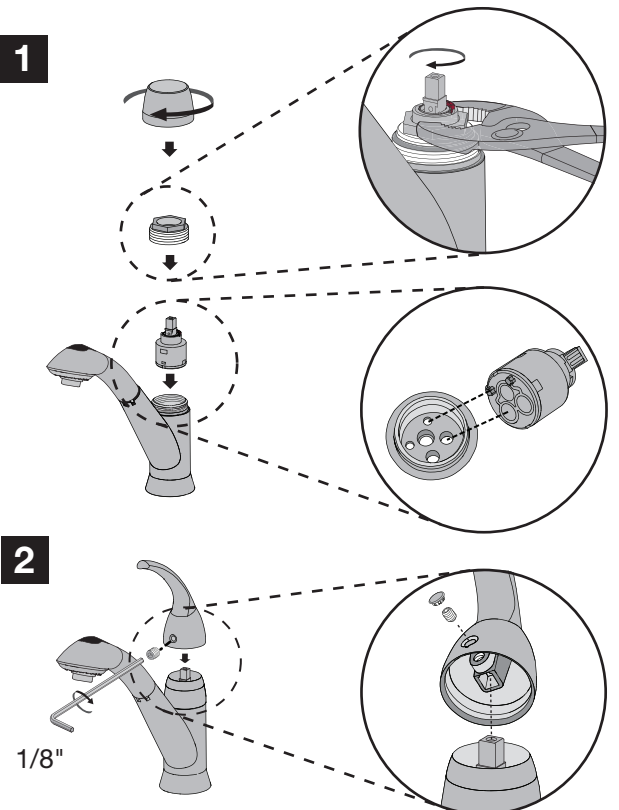
Clean finish area by using mild soap and water or non-abrasive cleaner and then rinse immediately. A non-abrasive wax may be used to preserve finish area.

Valve cartridge replacement

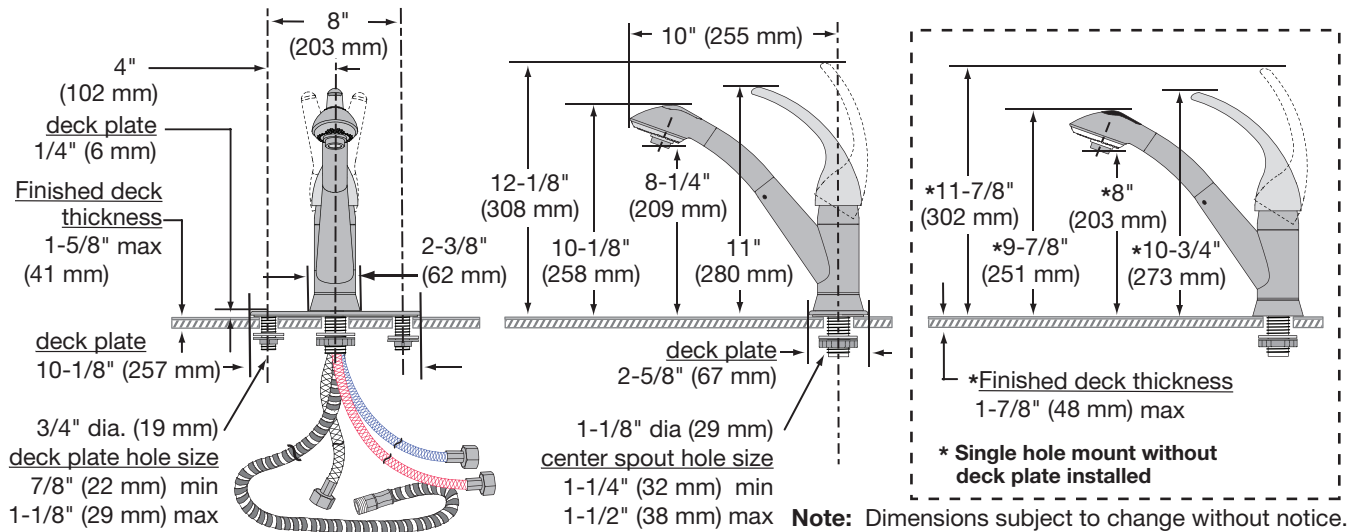
Removing handle and cartridge



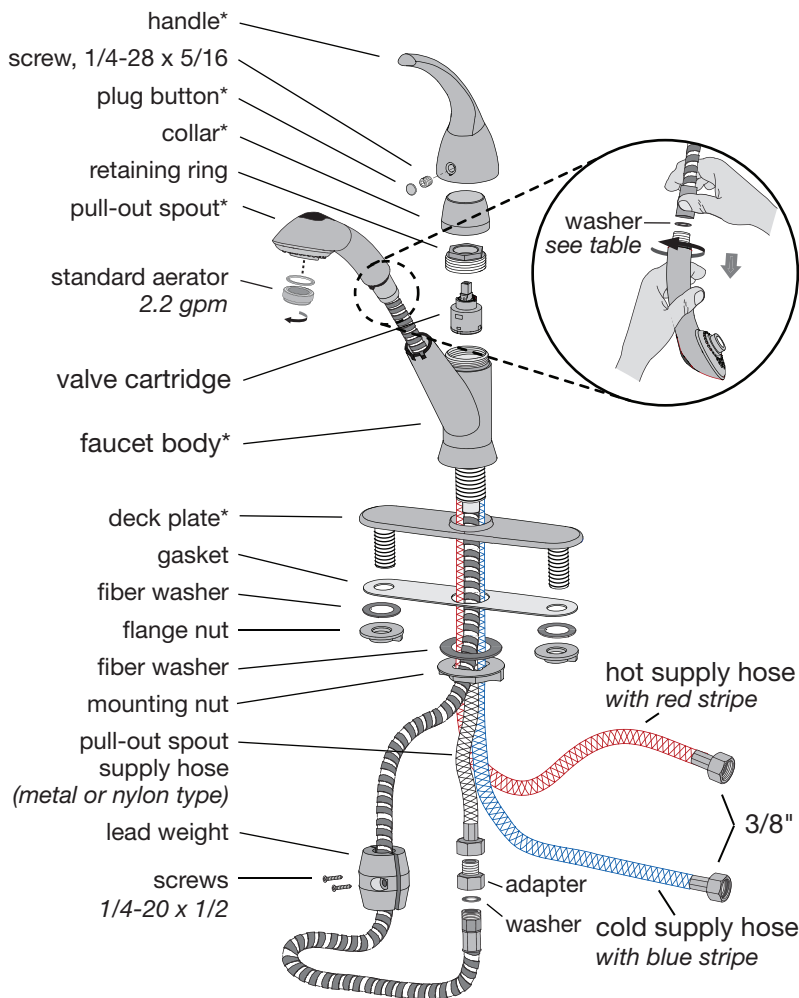
Replacing cartridge and handle

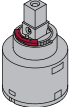





Dimensions Vella Kitchen Faucet, S-2610



Parts Assembly Vella Kitchen Faucet, S-2610



| Replacement Parts | |
|------------------------|---|
| Part Number | Item |
| KN-4 | valve cartridge  |
| SC-12W | Pull-out spout hose washer Washer for flexible metal type hose  |
| KN-236A | Washer for nylon type hose  |
| LN-216 LN-15-1.5-NA | aerator flow rates 2.2 gpm (8.3L/min)  1.5 gpm (5.7L/min) |

* Note: When ordering parts for faucets with an optional decorative finish, append appropriate three letter suffix code to part numbers marked with an asterisk (*).

Ordering replacement parts:

Symmons customer service: (800) 796-6667, (781) 848-2250 M-F 8:00 am - 7:30 pm EST
Symmons distributors: www.symmons.com

WARNING: This product can expose you to chemicals including lead, which is known to the state of California to cause cancer, birth defects, or other reproductive harm. For more information, go to www.P65Warnings.ca.gov.