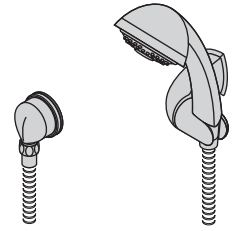





**552HS**  
**Elm™ 3 Mode Hand Shower Assembly**  
**Operation & Maintenance Manual**

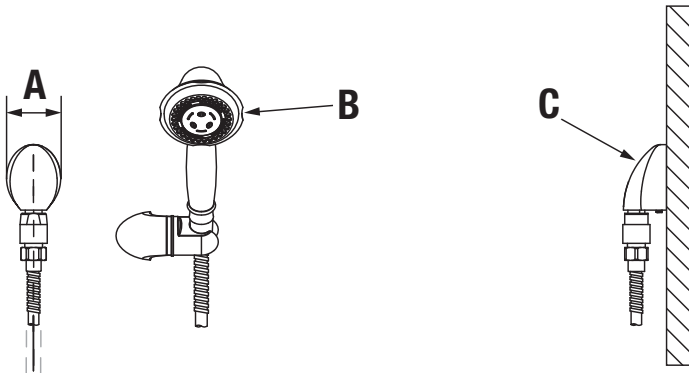


<p><b>Model Number</b></p> <p><input type="checkbox"/> <b>552HS</b>      <i>Elm 3 Mode Hand Shower Assembly</i></p>	<p><b>Specifications</b></p> <p>3 mode hand shower assembly includes dual checks, wall connection, cradle for hand shower mounting, flexible metal hose and standard 2.5 gpm (9.5 L/min) flow restrictor. Components are made from metal and plastic materials plated in standard polished chrome finish.</p>
<p><b>Modifications</b></p> <p><input type="checkbox"/> <b>-1.5</b>  1.5 gpm (5.7 L/min) flow restrictor</p> <p><input type="checkbox"/> <b>-2.0</b>  2.0 gpm (7.6 L/min) flow restrictor</p> <p><input type="checkbox"/> <b>-552HSB</b>      30" slide bar in place of wall cradle on hand shower units</p> <p><input type="checkbox"/> <b>-SBZ</b>      Seasoned bronze finish</p> <p><input type="checkbox"/> <b>-STN</b>      Satin nickel finish</p> <p><b>Note:</b> Append appropriate -suffix to model number.</p>	<p><b>Compliance</b></p> <p>-ASME A112.18.1/CSA B125.1</p> <div style="text-align: right;">  </div> <p><b>Warranty</b></p> <p><b>Limited Lifetime</b> - to the original end purchaser in consumer installations.  <b>5 Years</b> - for commercial installations.</p> <p>Refer to <a href="http://www.symmons.com/warranty">www.symmons.com/warranty</a> for complete warranty information.</p>

**Dimensions**

**Measurements**

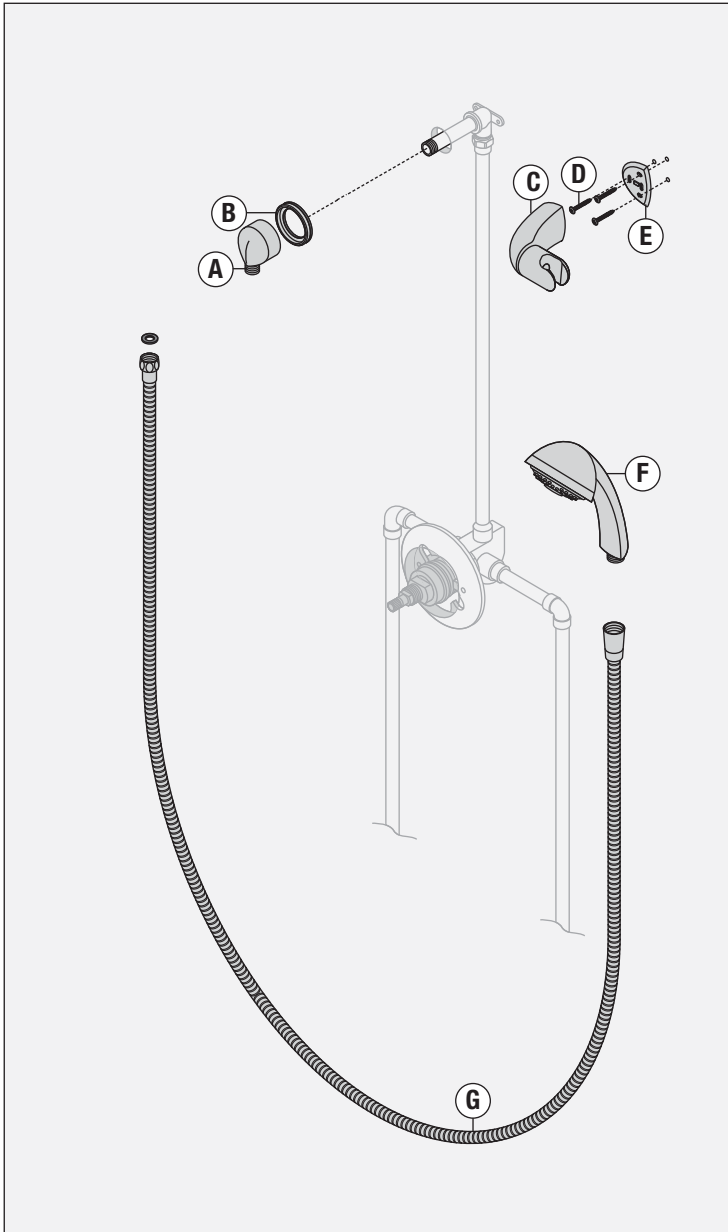
A	2 1/8", 54 mm
B	Ø 3 1/4", 83 mm
C	1/2" I.P.S.



**Note:** Dimensions are subject to change without notice.

**552HS**  
**Elm™ 3 Mode Hand Shower Assembly**  
**Operation & Maintenance Manual**


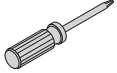

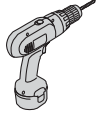
**Parts Breakdown**



Replacement Parts		
Item	Description	Part Number
F	3 Mode Hand Shower	552W

**Notes:**

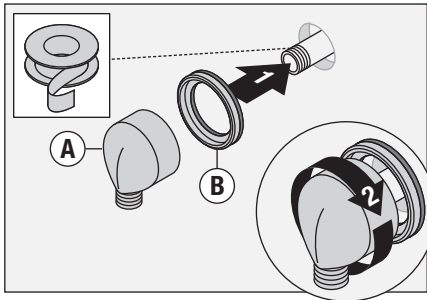
- 1) Append -STN to part number for satin nickel finish; -SBZ for seasoned bronze finish.
- 2) Append -1.5 or -2.0 to hand shower for low flow.

Required for Installation	
Adjustable wrench	
Phillips head screwdriver	
Teflon Tape	
Power Drill	

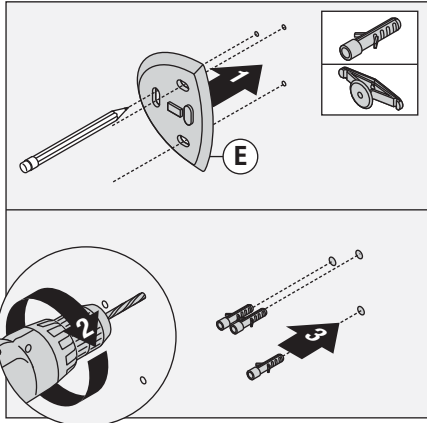
**552HS**  
**Elm™ 3 Mode Hand Shower Assembly**  
**Operation & Maintenance Manual**

**Installation**

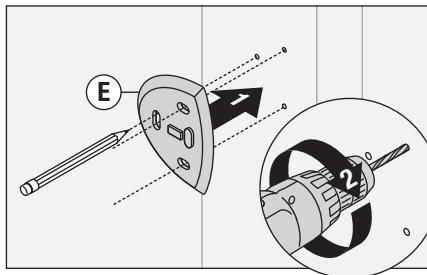
- 1) Install wall elbow (A) and escutcheon (B) to stub out pipe. Turn clockwise to secure.



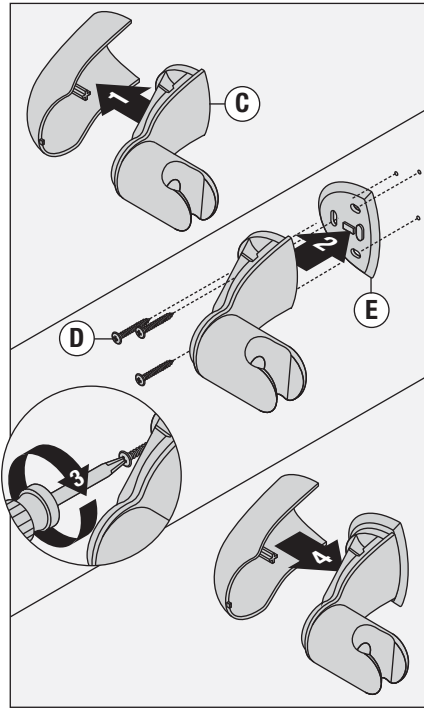
- Option:** Place mounting plate (E) in position, mark and drill 3/16" holes into wall. Install anchors.



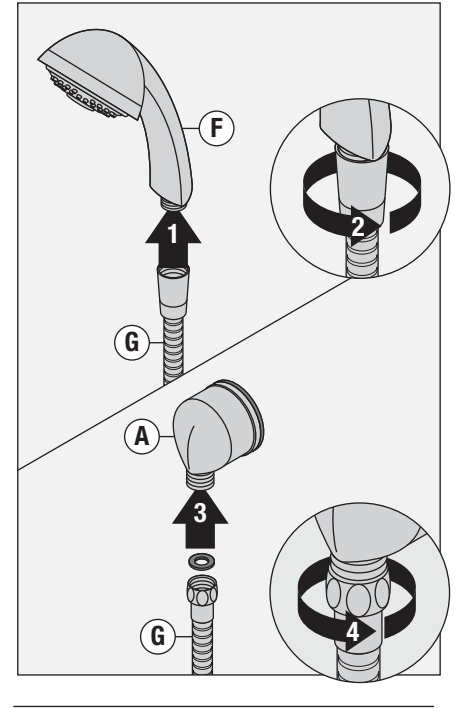
- 2) Place mounting plate (E) in position, mark and drill 1/8" pilot holes into stud.



- 3) Remove cover of hand shower cradle (C). Install cradle and mounting plate (E). Secure with three screws (D). Replace cover on hand shower cradle.



- 4) Attach large end of hand shower hose (G) to hand shower head (F). Attach small end of hand shower hose (G) to wall elbow (A). Turn clockwise to tighten.



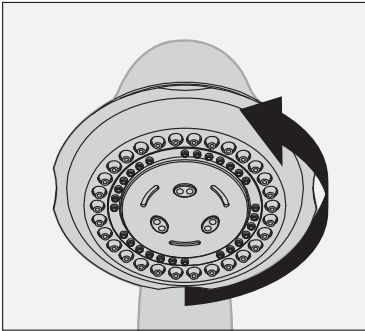
**552HS**  
**Elm™ 3 Mode Hand Shower Assembly**  
**Operation & Maintenance Manual**

---

**Operation**

---

1) Turn shower head to desired mode of operation.




---

**Care and Cleaning**

---

1) Clean finished trim area with a soft cloth using mild soap and water or a non-abrasive cleaner and then quickly rinse with water.

---

**Troubleshooting Chart**

---

Problem	Cause	Solution
Finish is spotting.	Elements in water supply may cause water staining on finish.	Clean finished trim area with a soft cloth using mild soap and water or a non-abrasive cleaner and then quickly rinse with water.