

HEAVY-DUTY ACCESS HOUSING

» 850 SERIES

SPECIFICATION

Sioux Chief 850 Series heavy-duty access housing shall be used where necessary in drainage systems. Housing shall be used to provide access to cleanouts, valves or other fixtures in heavy-traffic areas. Housing shall incorporate dual outer flanges which lock into concrete to support the housing independently of fixture. Cover shall meet applicable load requirements for intended use. Designed in accordance with ASME A112.36.2M

MATERIALS

Housing body: Ductile Iron

Cover: Ductile Iron

Optional ring/cover veneer: Nickel-bronze

Cover lifting device: Nickel-bronze

COVER LOAD RATING

7,500 lbs. (Extra-heavy duty)

DIMENSIONS

A: Inner diameter	8-1/2"
B: Clear opening	6-1/2"
C: Top diameter ¹	9-1/4"
D: Flange diameter	11-1/4"
E: Overall height ²	11-1/2"
F: Top to upper flange	2-3/4"
G: Top to lower flange	7-1/8"

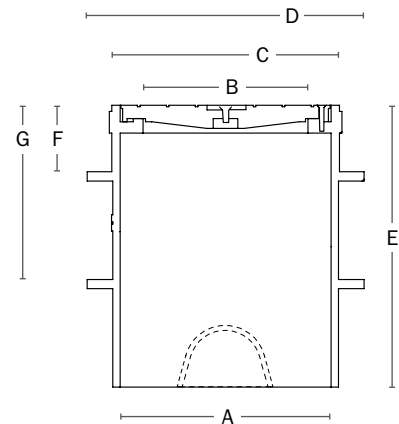
¹ add 7/16" for nickel-bronze veneer

² add 1/4" for nickel-bronze veneer

ITEM # SUBMITTED	_____
JOB NAME	_____
LOCATION	_____
ENGINEER	_____
CONTRACTOR	_____
PO#	_____ TAG _____



850-9i



Create Item Number

850-A B

e.g. **850-9i**: Heavy-duty access housing with ductile iron cover

COVER A

9i = Ductile iron cover with lifting device

9iN = Ductile iron cover with Nickel-bronze ring/cover veneer and lifting device

INSTALLED OPTIONS B

V = Vandal-resistant cover screws