

LINEAR SHOWER DRAIN

823 SERIES

StreamLine™

SPECIFICATION

Sioux Chief 823 Series StreamLine™ pre-sloped, linear shower/floor drains shall be used where necessary in drainage systems. Drain shall have a seamless, one-piece body with flat bottom for stability and offset 2" Sch. 40 hub connection. Drain shall employ a one-piece stainless steel clamping collar to make a mechanical joint between drain body and waterproofing membrane. Stainless steel strainer or tile insert shall meet applicable load and flow requirements for intended use.

MATERIALS

Drain body/connection: PVC

Clamping collar: stainless steel

Strainer: stainless steel, brushed finish

INSTALLATION

Install per manufacturer's instructions (provided), ANSI A108 standards and TCNA guidelines.

STRAINER FREE AREA

Length:	24"	32"	40"	60"
Slotted strainer:	11.8 in ²	17.1 in ²	20.4 in ²	34.2 in ²

DIMENSIONS

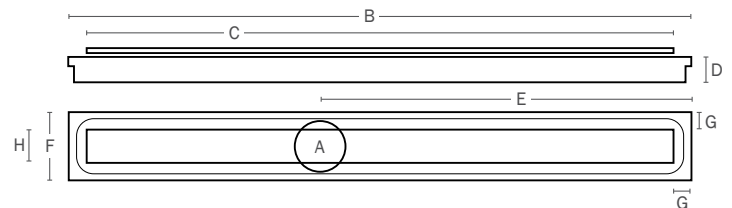
A: Connection	2" PVC Sch. 40 hub			
B: Drain body length	24"	32"	40"	60"
C: Strainer length	21 ³ / ₄ "	29 ³ / ₄ "	37 ³ / ₄ "	57 ³ / ₄ "
D: Drain body thickness	1 ¹ / ₄ "	1 ³ / ₈ "	1 ⁷ / ₁₆ "	1 ⁵ / ₈ "
E: Connection offset	15 ³ / ₄ "	19 ¹ / ₂ "	23 ³ / ₄ "	33 ³ / ₄ "
F: Drain body width	4 ¹ / ₂ "			
G: Body edge to strainer	1 ¹ / ₈ "			
H: Strainer width*	2 ¹ / ₄ "			

*Tile-in tray is 2" wide

ITEM # SUBMITTED	_____
JOB NAME	_____
LOCATION	_____
ENGINEER	_____
CONTRACTOR	_____
PO#	_____ TAG _____



823-32PSS



Create Item Number

823-AB

e.g. **823-32PSS:** 32" linear shower drain with slotted strainer

CONNECTION SIZE A

24P = 24" drain body length

32P = 32" drain body length

40P = 40" drain body length

60P = 60" drain body length

STRAINER PATTERN B

SS = Slotted pattern 

ST = for Tile Insert