

## Maxi 400 System Ductile Grate / F900 / ADA

### Product Specifications

**Part. No.**  
865-M16PN00FA

**Load Class:**

F900 (198,000 lbs) according EN 1433 Certified by MPA-HB (independent laboratories)

**Material:**

Ductile Iron GJS-500-7 (ASTM A536 70-50-05)

**Locking:**

F1 Locking system with traffic-safe screws

**Surface:**

Longitudinal slot design (0.47" x 1.02") ensures high water intake. Slots according ADA Standards

**Weight:**

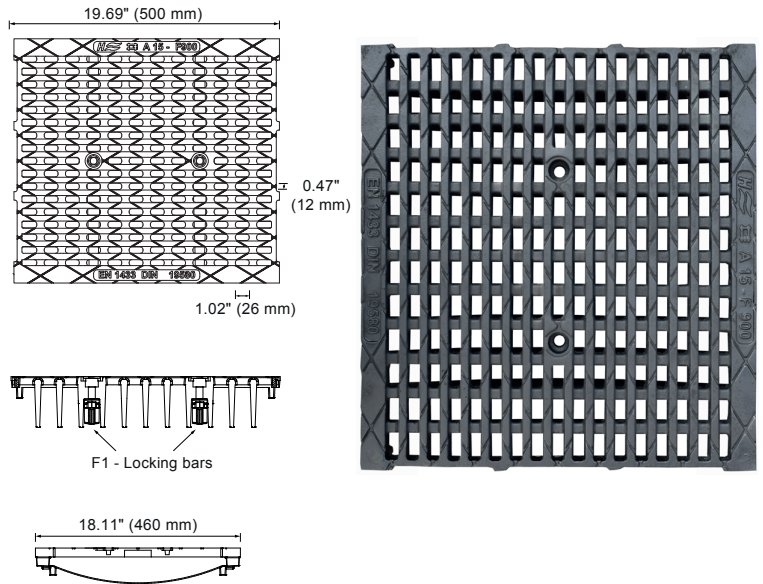
89.06 lbs (40.4 kg)

**Water intake:**

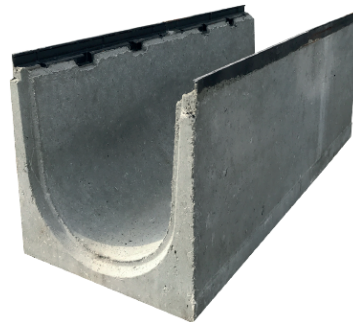
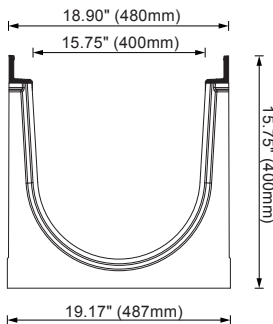
189.9 in<sup>2</sup> (1225 cm<sup>2</sup>) per meter

**Use:**

This grate is designed for use with HydroTec Maxi 400 channels made of fiber reinforced concrete with a ductile iron edge protection.



### Fiber Reinforced Concrete Channel



### System Specifications

**Grate:**

The grate is made of ductile iron and certified to EN 1433 Load Class F900.

**F1-Locking System:**

The F1-Locking system is locked by 4 screws per meter, that can be opened by using a 1/2" multi-tooth nut. The screws fix the grate to the channel body by using the F1-Locking bars.

**Maxi 400 Channel:**

The channel body is made of fiber reinforced concrete with a ductile iron edge protection w/PE rail insert to eliminate grate rattle. Connecting profiles at the end of the channel guarantee an easy and fast installation.

