

Maxi 400 System Ductile Grate / E600 / ADA

Product Specifications

Part. No.
865-M16PN00EA

Load Class:

E600 (132,000 lbs) according EN 1433
Certified by MPA-HB (independent laboratories)

Material:

Ductile Iron GJS-500-7
(ASTM A536 70-50-05)

Locking:

F1 Locking system
with traffic-safe screws

Surface:

Longitudinal slot design (0.47" x 1.02") ensures
high water intake. Slots according ADA Standards

Weight:

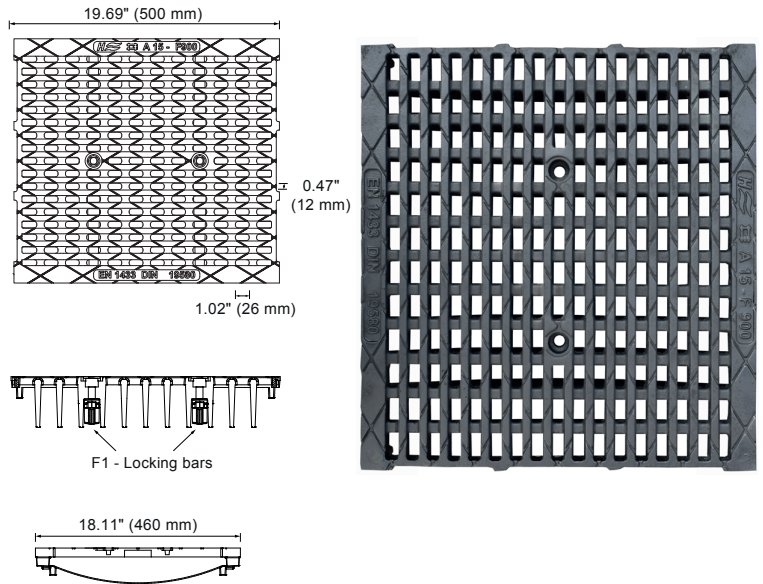
78.48 lbs (35.6 kg)

Water intake:

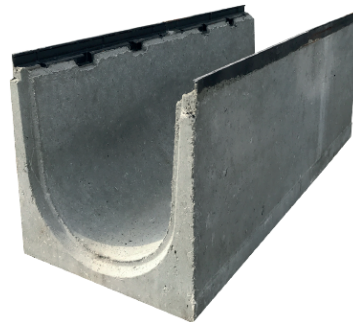
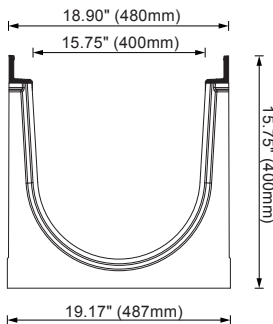
189.9 in² (1225 cm²) per meter

Use:

This grate is designed for use with HydroTec
Maxi 400 channels made of fiber reinforced
concrete with a ductile iron edge protection.



Fiber Reinforced Concrete Channel



System Specifications

Grate:

The grate is made of ductile iron and certified to
EN 1433 Load Class F900.

F1-Locking System:

The F1-Locking system is locked by 4 screws per meter, that
can be opened by using a 1/2" multi-tooth nut. The screws fix
the grate to the channel body by using the
F1-Locking bars.

Maxi 400 Channel:

The channel body is made of fiber reinforced concrete
with a ductile iron edge protection. Connecting profiles
at the end of the channel guarantee an easy and fast
installation.

