

# CLEANOUT TEE FITTING

## 853 SERIES

### SPECIFICATION

Sioux Chief 853 series cleanout tee. Coated cast iron body with gas and watertight threaded plug. Designed in accordance with ASME A112.36.2M

Used in concealed drainage lines where a cleanout is required

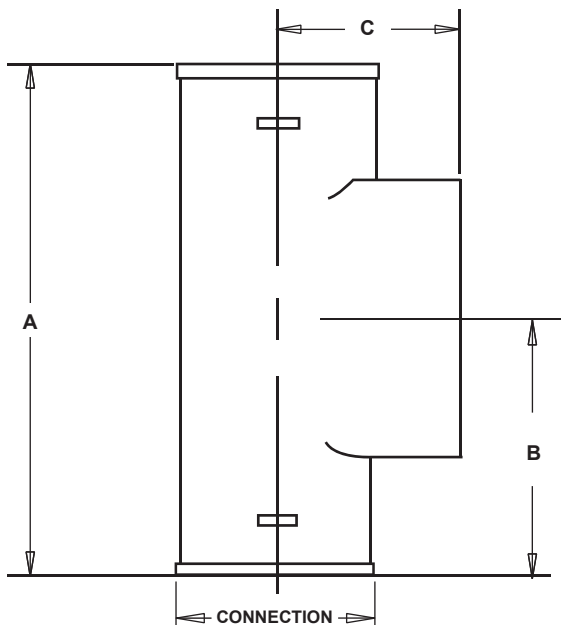
### MATERIALS

**Tee:** Coated cast iron

**Plug:** brass

### DIMENSIONS

Connection (No-Hub)	2"	3"	4"	6"	8"
<b>A:</b> Overall Height	6-3/8"	7-3/4"	8-7/8"	12-1/2"	15-1/4"
<b>B:</b> End to Plug C/L	3-3/16"	3-7/8"	4-7/16"	6-1/4"	7-5/8"
<b>C:</b> Trunk C/L to Face	2"	2-11/16"	3"	5"	6"



ITEM # SUBMITTED	_____
JOB NAME	_____
LOCATION	_____
ENGINEER	_____
CONTRACTOR	_____
PO#	_____ TAG _____



853-T24I

### Create Item Number

## 853-A

e.g. **853-T24I:** 4" No-Hub cast iron cleanout tee with brass plug

#### FITTING SIZE A

- T22I** = 2" No-Hub
- T23I** = 3" No-Hub
- T24I** = 4" No-Hub
- T26I** = 6" No-Hub
- T28I** = 8" No-Hub

#### Available Separately:

- 870-93:** 3" diameter stainless steel wall cleanout cover - 16GA
- 870-94:** 4" diameter stainless steel wall cleanout cover - 16GA
- 870-95:** 5" diameter stainless steel wall cleanout cover - 16GA
- 870-96:** 6" diameter stainless steel wall cleanout cover - 16GA
- 870-98:** 8" diameter stainless steel wall cleanout cover - 16GA
- 870-910:** 10" diameter stainless steel wall cleanout cover - 20GA
- 870-912:** 12" diameter stainless steel wall cleanout cover - 20GA