

# LINEAR SHOWER DRAIN

» 823 SERIES

StreamLine™

ITEM # SUBMITTED	_____
JOB NAME	_____
LOCATION	_____
ENGINEER	_____
CONTRACTOR	_____
PO#	_____ TAG _____

## SPECIFICATION

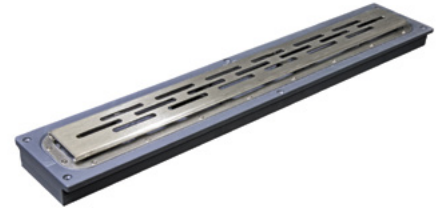
Sioux Chief 823 Series StreamLine pre-sloped shower/floor drains shall be used where necessary in drainage systems. Drain shall have a seamless, one-piece body with flat bottom for stability and offset 2" Sch. 40 hub connection. Drain shall employ a one-piece stainless steel clamping collar to make a mechanical joint between drain body and waterproofing membrane. Stainless steel strainer or tile insert shall meet applicable load and flow requirements for intended use.

## MATERIALS

**Drain body / connection:** PVC

**Clamping collar:** Stainless steel

**Strainer:** Stainless steel, brushed finish



823-32PSS

## INSTALLATION

Install per manufacturer's instructions, ANSI A108 standards and TCNA guidelines.

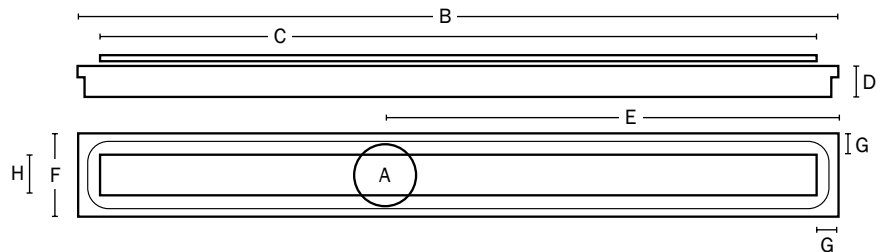
## STRAINER FREE AREA

<b>Drain body:</b>	24"	32"	40"	60"
<b>Slotted strainer:</b>	11.8 in <sup>2</sup>	17.1 in <sup>2</sup>	20.4 in <sup>2</sup>	34.2 in <sup>2</sup>
<b>Pyramid strainer:</b>	9.0 in <sup>2</sup>	12.7 in <sup>2</sup>	16.4 in <sup>2</sup>	24.8 in <sup>2</sup>

## DIMENSIONS

<b>A:</b> Connection	2" PVC Sch. 40 hub			
<b>B:</b> Drain body length	24"	32"	40"	60"
<b>C:</b> Strainer length	21 <sup>3</sup> / <sub>4</sub> "	29 <sup>3</sup> / <sub>4</sub> "	37 <sup>3</sup> / <sub>4</sub> "	57 <sup>3</sup> / <sub>4</sub> "
<b>D:</b> Drain body thickness	1 <sup>1</sup> / <sub>4</sub> "	1 <sup>3</sup> / <sub>8</sub> "	1 <sup>3</sup> / <sub>16</sub> "	1 <sup>5</sup> / <sub>8</sub> "
<b>E:</b> Connection offset	15 <sup>3</sup> / <sub>4</sub> "	19 <sup>1</sup> / <sub>2</sub> "	23 <sup>3</sup> / <sub>4</sub> "	33 <sup>3</sup> / <sub>4</sub> "
<b>F:</b> Drain body width	4 <sup>1</sup> / <sub>2</sub> "			
<b>G:</b> Body edge to strainer	1 <sup>1</sup> / <sub>8</sub> "			
<b>H:</b> Strainer width*	2 <sup>1</sup> / <sub>4</sub> "			

\* Tile-in tray is 2" wide



Create Item Number

## 823-A B

e.g. 823-32PSS: 32" linear shower drain with slotted strainer

### DRAIN BODY LENGTH A

**24P** = 24" drain body length


**32P** = 32" drain body length

**40P** = 40" drain body length

**60P** = 60" drain body length

### STRAINER PATTERN B

**SS** = Slotted pattern 

**SP** = Pyramid pattern 

**ST** = For Tile Insert