

MANIFOLD – ASTM F1960 PEX GRIP

» 672 SERIES

BranchMaster™

ITEM # SUBMITTED	_____
JOB NAME	_____
LOCATION	_____
ENGINEER	_____
CONTRACTOR	_____
PO#	_____ TAG _____

SPECIFICATION

Sioux Chief ASTM F1960 BranchMaster manifolds shall be used in plumbing systems for safe distribution of hot or cold water when used in standard plumbing practices. Manifolds shall be used in new construction or remodel applications, utilized in various layouts and shall provide appropriate water distribution to supply fixtures. F1960 manifolds shall be listed to appropriate standards for end outlets and branches. Each manifold shall be assembled with no lead solder or braze and tested by Sioux Chief prior to shipment.

MATERIALS

Trunk: copper
End outlet: copper or C69300 brass
Branch: C69300 brass
Solder: No Lead

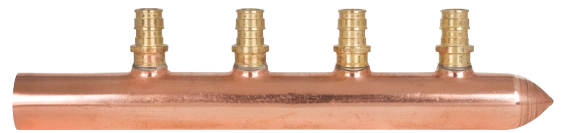
APPLICATIONS

For use with hot and cold water distribution systems.

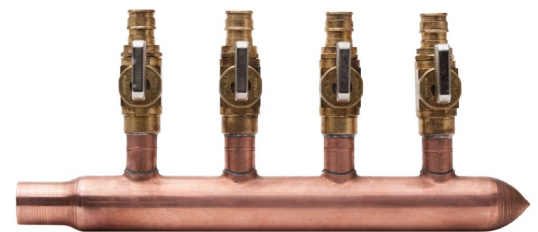
CERTIFICATIONS

AB1953 compliant
 NSF listed

Note: connection specifications are limited to those called out in their respective ASTM standards for pipe and fittings.



672WG0440



672WV0430



Create Item Number

672WABC

e.g. **672WG03C0**: 1" L copper trunk, three 1/2" ASTM F1960 no lead branches, 1" CPVC inlet x spun closed
 Additional options available at www.siouxchief.com

MANIFOLD TYPE A

G = 1/2" F1960 no lead branch
V = 1/2" F1960 valve branch

BRANCH MULTIPLES B

02 = 2 branches
03 = 3 branches
04 = 4 branches
06 = 6 branches
08 = 8 branches
10 = 10 branches
12 = 12 branches
13 = 13 branches

TRUNK TYPE C

40 = 1" L, 1" male sweat x spun closed
30 = 1" L, 3/4" male sweat x spun closed
44 = 1" L, 3/4" male sweat x 3/4" male sweat
C0 = 1" L, 1" CPVC x spun closed