

REVERSIBLE TUBE INSULATOR

» 558 SERIES

BiFolator™

ITEM # SUBMITTED	_____
JOB NAME	_____
LOCATION	_____
ENGINEER	_____
CONTRACTOR	_____
PO#	_____ TAG _____

SPECIFICATION

Sioux Chief's BiFolator™ reversible tube insulator shall be used where necessary to insulate 1/2" and 3/4" CTS supply lines in residential or commercial applications. Insulator shall be used on metal studs or brackets when a 1 1/2" diameter hole is made or used on wood studs when a 1 3/8" hole is drilled. Reversible insulator shall be compatible with CTS copper, PEX or CPVC tube.

INSTALLATION

Drill 1 3/8" hole in wood stud or punch 1 1/2" hole in metal stud using common stud punch tool. Identify the side of the BiFolator that matches the tube size. Install insulator around tube so the tube size indicated on the BiFolator wraps around the tube. Push the leading edge into stud hole cavity until stop tabs are flush with the stud's surface. The fins of the BiFolator prevent the tube from touching the wood or metal surface.

MATERIALS

Ivory: low-density polyethylene (LDPE)

Black: high-density polyethylene (HDPE)

E84 plenum-safe orange: polyvinylidene fluoride (PVDF), meets ASTM E84 25/50 and UL-94 V0 flame rating

SAFE WORKING TEMPERATURE

Maximum temperature: 180°F (82°C)

Impact resistance: to 0°F (-18°C)

DIMENSIONS

A: Unrolled length 3.20"

B: Depth 0.86"

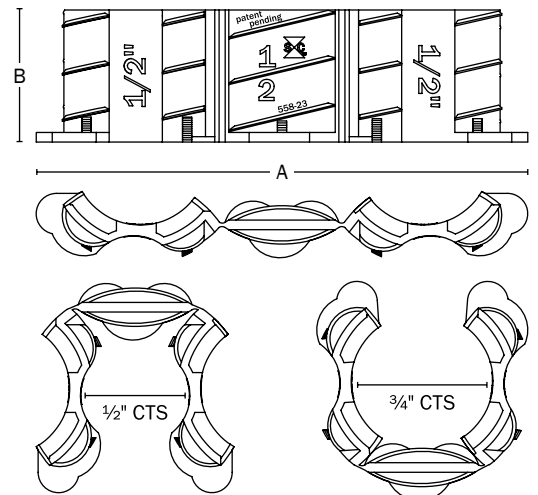
* Not for use on copper heat recirculating lines.



558-23



558F23



Made in USA

Create Item Number

558A

e.g. **558-23:** ivory BiFolator for 1/2" and 3/4" CTS

MATERIAL A

-23 = ivory LDPE

-23B = black HDPE

F23 = orange E84 plenum-safe PVDF