

ISOLATING DRIVE HOOK

556 SERIES

PickUp Talon™

SPECIFICATION

Sioux Chief 556 series PickUp Talon™ CTS drive hook shall be used where necessary to secure CTS copper, PEX, or CPVC tube in piping systems. Drive hook shall be 100% corrosion proof and U.V. resistant. Drive hook shall be impact resistant to 0°F, and be able to withstand continuous temperatures up to 160°F. Drive hook shall include a rust-resistant fastener to provide a secure installation. Drive hook shall protect tube from abrasive mounting surfaces and help reduce 'ticking' and other noise transfer. Drive hook shall snap onto CTS tube for easy installation and allow for expansion and contraction of tube. Drive hook shall be designed to minimize tube damage if fastener is over-driven.

INSTALLATION

PickUp Talon should be installed in alternating directions (so that the fastener's nail or screw is on alternating sides of the tube being fastened) for secure installation. Install at intervals described in local plumbing code for the type of pipe or tube being secured. For IPS tube, use the next larger size fastener, e.g. for 1/2" IPS tube, use a 3/4" PickUp Talon.

MATERIALS

Drive hook: High-density polyethylene - U.V. protected

Nail: Zinc-plated steel, ring shank

Screw: Zinc-plated steel, #6 Phillips/pan head, self-drilling tip

SAFE WORKING LOAD¹

556-2	556-3	556-4	556-5
12 lbs.	16 lbs.	24 lbs.	25 lbs.

SAFE WORKING TEMPERATURE

Impact resistant to 0° F (18° C)

Maximum Temperature: 160° F (71° C)

DIMENSIONS

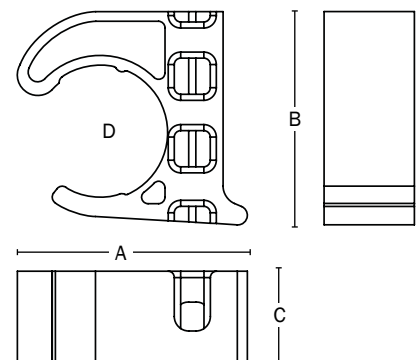
	556-2	556-3	556-4	556-5
A: Length	1.12"	1.39"	1.82"	2.13"
B: Height	1.02"	1.38"	1.81"	2.26"
C: Width	0.38"	0.40"	0.45"	0.71"
D: Nom. CTS size	1/2"	3/4"	1"	1-1/4"

¹ Safe working load = Failure load x 0.50

ITEM # SUBMITTED	_____
JOB NAME	_____
LOCATION	_____
ENGINEER	_____
CONTRACTOR	_____
PO#	_____ TAG _____



556-2
Patent # 7,207,530



Create Item Number

556-AB

e.g. **556-2S**: PickUp Talon 1/2" isolating drive hook with screw

NOMINAL SIZE **A**

- 2** = 1/2" CTS
- 3** = 3/4" CTS
- 4** = 1" CTS
- 5** = 1-1/4" CTS

COLOR/FASTENER TYPE **B**

- _** = Black hook with nail²
- C** = Ivory hook (for CPVC) with nail³
- S** = Black hook with screw⁴

² Standard | ³ Not available for 1-1/4" size | ⁴ Not available for 1" size