

# STUD SUPPORT BRACKET

## » 533 SERIES

### SPECIFICATION

Sioux Chief 533 series stud support bracket shall be used where necessary to reinforce studs that have been bored or notched to allow for DWV piping. Support bracket shall be designed to conform to national plumbing code requirements and secured to stud with nails or screws.

### MATERIALS

16 gauge steel (.062" min) steel

### INSTALLATION

For use with any piping that is 2" Sch. 40 or smaller. Use fasteners (not provided) in all fastener holes. Fasteners shall be no less than #10d x 1½" long. Sioux Chief's 533 series Stud Shoe bracket is NOT intended to be used as a total replacement of removed construction materials. Be sure to follow all local residential and building code requirements.

### MAX LOAD RATING

**533-1:** 552 lbs.

**533-2:** 810 lbs.

**533-3:** 945 lbs.

Max load rating based on use of #10d x 1-1/2" nails or screws

### DIMENSIONS

**A:** Width

533-1	1.5" (single stud)
533-2	3.0" (double studs)
533-3	4.5" (triple studs)

**B:** Depth 3.375"

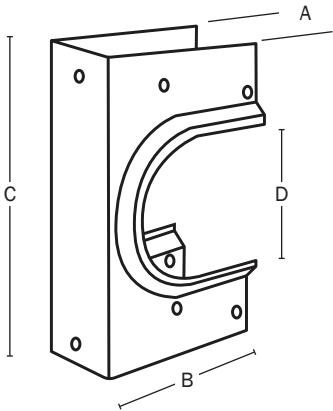
**C:** Height 5.375"

**D:** Pipe opening 2.5"

ITEM # SUBMITTED	_____
JOB NAME	_____
LOCATION	_____
ENGINEER	_____
CONTRACTOR	_____
PO#	_____ TAG _____

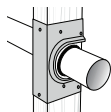


533-1

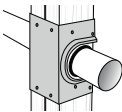


Made in USA

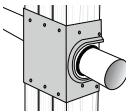
### Choose Item Number



**533-1** = Support bracket  
for single stud



**533-2** = Support bracket  
for double studs



**533-3** = Support bracket  
for triple studs