

UNIVERSAL ADJUSTABLE BRACKET

» 523 BRACKET

PowerBar™

SPECIFICATION

Sioux Chief's PowerBar universal adjustable bracket shall be used where necessary for supporting pipes or stub outs. Bracket shall be corrosion resistant, adjust telescopically and have dual fastening tabs on each end. Pilot holes for #6 – #10 screws shall be provided on three sides of the bracket. Bracket shall be available in two different sizes to accommodate 16" or 24" stud bays and packaged with or without screws for fastening each tab to structure.

Optional adjustable channel clamps with elastomer inserts for fastening any pipe, tube, cable, etc. shall be available. (See separate specification document for information on pre-loaded adjustable channel clamps).

Bracket shall be approved for use with copper tube, CPVC tube, PEX/PB tube, steel pipe, Drop Ear or High Ear brass 90 fittings or other water supply or DWV fittings, CSST lines, plastic or steel conduit, and low voltage DataCom cable. Bracket shall be certified by UPC/IAPMO.

INSTALLATION

Adjust bracket to desired length (bracket must have a minimum overlap of 2" in center). Fasten all four tabs to studs, joists or walls. Position Drop Ear 90, High Ear 90 or other tube clamp or tube strap at desired location along bracket and secure with screws. It is permissible to use one bracket section and fasten directly through channel.

MATERIAL

Bracket: 20 gauge (0.036" +/- .003) galvanized steel
Screws: #8 x 1" Phillips, panhead, drill-tip, zinc-plated (optional)

SAFE WORKING LOAD*

Bracket span	Safe load
14"	150 lbs.
17"	115 lbs.
21"	80 lbs.
24"	45 lbs.

*Safe working load = one-half failure of centrally hung load

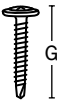
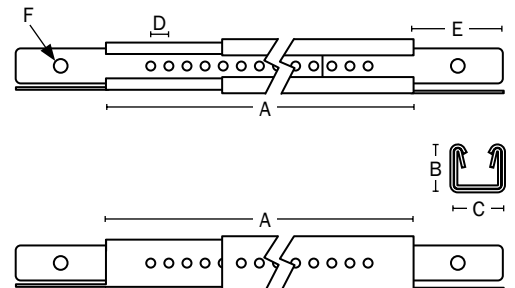
DIMENSIONS

	523-16	523-24
A: Outer/inner bracket length	9"	14"
B: Bracket height	0.529"	0.529"
C: Bracket width	0.602"	0.602"
D: Pilot hole spacing	0.203"	0.203"
E: Tab length	1"	1"
F: Pilot hole diameter	0.1"	0.1"
G: Screw length	1"	1"

ITEM # SUBMITTED _____
JOB NAME _____
LOCATION _____
ENGINEER _____
CONTRACTOR _____
PO# _____ TAG _____



523-2404



Made in USA

Create Item Number

523-A

e.g. **523-2404**: 14" – 26" adjustable bracket with six screws

BRACKET CONFIGURATION A

16 = 9" – 16" adjustable bracket; no screws

1604 = 9" – 16" adjustable bracket; six screws

24 = 14" – 26" adjustable bracket; no screws

2404 = 14" – 26" adjustable bracket; six screws