

BRACKETING SYSTEM

» 520-E SERIES

Edge Support System™

SPECIFICATION

Sioux Chief 520-E series Edge Bracketing System shall be used where necessary for securing CTS water supply lines vertically or horizontally within a wood or metal 2x4 stud wall. The Edge bracket is galvanized or copper plated steel and is a formed, angle bracket with pilot holes. Bracket shall resist corrosion. Bracket may or may not be used 520-EC series clamps. Hole schedule on bracket has been designed to align with other clamps such as 2-hole galvanized or copper plated pipe straps, plastic pipe or suspension straps, drop ear 90 fittings or other devices.

Sioux Chief provides plastic Edge Clamps™ specifically designed for the Edge bracket to position and secure CTS stub out at any desired location on either bracket surface. System shall be approved for use with copper tube, CPVC tube, or PEX tube.

MATERIALS

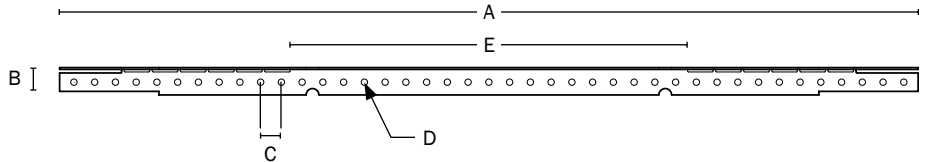
Brackets: .035" (20 gauge)
Clamps: ABS

INSTALLATION

Tabbed ends of bracket may be mounted to the face of the stud or bent to fit within the stud cavity. Perforated bracket apex may be cut and bent to allow fit within stud cavities less than 16-inches on center. Once bracket is secured to stud, install Edge Clamp or other clamping device using approved hardware. Where desired, Edge clamp may be glued to CPVC stub out.

DIMENSIONS

	520-E16	520-E24
A: length	16.8"	26.8"
B: height	0.5"	0.5"
C: hole spacing	0.406"	0.406"
D: hole diameter	0.125"	0.125"
E: bracketing distance	7.8"	17.8"



ITEM # SUBMITTED	_____
JOB NAME	_____
LOCATION	_____
ENGINEER	_____
CONTRACTOR	_____
PO#	_____ TAG _____



520-E16C



520-EC2

Made in USA

Create Item Number

520-EAB

e.g. 520-E16C: 16" long copper plated bracket

BRACKET LENGTH A

16 = 16" stud bay
24 = 24" stud bay

BRACKET FINISH B

_ = galvanized - leave blank
C = copper plated

EDGE CLAMPS

520-EC2 = 1/2" CTS Edge clamp
520-EC3 = 3/4" CTS Edge clamp