

# ProBrite™ CBX SINK STRAINER

/// 245-1283 SERIES

## SPECIFICATION

Tomahawk ProBrite™ CBX sink strainers are designed to prevent debris from entering a drainage system with a removable strainer basket designed to collect debris. Tomahawk sink strainers are intended to convey domestic waste from fixtures to the drain, waste and vent (DWV) system. Complies to ASME A112.18.2-2015/CSA B125.2-15.

## MATERIALS

Cast brass

**Finish:** chrome

## FEATURES

- highly polished chrome finish
- brass locknut and slipnut
- stainless steel basket with rubber seal
- back nut style

## DIMENSIONS

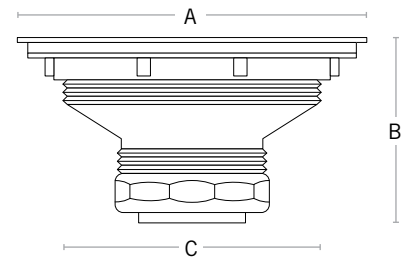
\*Tomahawk specifications in US customary units are approximate and are provided for reference only.

- A: flange diameter 4-11/32"  
B: body height 2-1/2"  
C: body diameter 3-3/8"

ITEM # SUBMITTED	_____
JOB NAME	_____
LOCATION	_____
ENGINEER	_____
CONTRACTOR	_____
PO#	_____ TAG _____



245-12832C04



Item Number

**245-12832C04**

**Description:** cast brass sink strainer, chrome, 1/bx

