

# METAL J-BENDS

/// 240-15 SERIES, 240-16 SERIES, 240-21 SERIES

## SPECIFICATION

Tomahawk Metal J-Bends are intended to provide accessible and replaceable tube and fittings to convey domestic waste from fixtures to the drain, waste and vent (DWV) system. Tomahawk Metal J-Bends shall meet or exceed ASME standard A112.18.2.

## MATERIALS

Brass

Finish: chrome

## DIMENSIONS

\*Tomahawk specifications in US customary units are approximate and are provided for reference only.

	-1551C	-1552C	-1553C	-1561C
A: center to center	3"	3"	3"	3-1/4"
B: inlet height	4-11/16"	4-11/16"	4-11/16"	4-15/16"
C: outlet height	2-11/16"	2-11/16"	2-11/16"	3-1/8"
D: diameter	1-1/4"	1-1/4"	1-1/4"	1-1/2"
E: gauge	22ga	20ga	17ga	22ga

	-1562C	-15631C	-1563C	-1661C
A: center to center	3-1/4"	3-1/4"	3-1/4"	3-1/4"
B: inlet height	4-15/16"	4-15/16"	4-15/16"	4-15/16"
C: outlet height	3-1/8"	3-1/8"	3-1/8"	3"
D: diameter	1-1/2"	1-1/2"	1-1/2"	1-1/2"
E: gauge	20ga	17ga	17ga	22ga

	-1662C	-1663C	-2163C
A: center to center	3-1/4"	3-1/4"	3-1/4"
B: inlet height	5-1/2"	4-15/16"	3-3/16"
C: outlet height	3"	3"	-
D: diameter	1-1/2"	1-1/2"	1-1/2"
E: gauge	20ga	17ga	17ga

ITEM # SUBMITTED	_____
JOB NAME	_____
LOCATION	_____
ENGINEER	_____
CONTRACTOR	_____
PO#	_____ TAG _____



240-1553C04



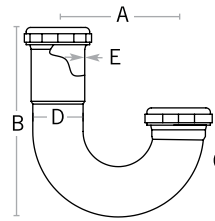
240-1553C04



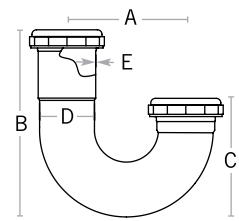
240-1663C04



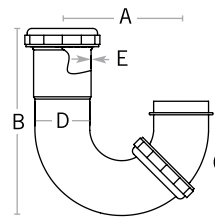
240-2163C04



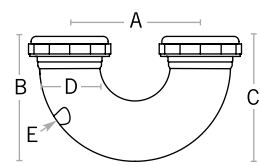
1-1/4" J-Bends



1-1/2" J-Bends



1-1/4" and 1-1/2" Swivel J-Bends



Low Inlet J-Bends

## Create Item Number

### 240-ABCDC04

e.g. 240-1552C04: J-Bend for P-Trap and S-Trap, 1-1/4", 20ga, chrome, 1/bx

#### ITEM A

15 = J-Bend for P-Trap and S-Trap

16 = J-Bend for sink trap

21 = J-Bend low inlet

#### SIZE B

5 = 1-1/4"

6 = 1-1/2"

#### GAUGE C

1 = 22ga

2 = 20ga

3 = 17ga

#### NUT D

\_ = cast

1 = brass



\*Not all combinations available. Contact your local rep to confirm availability