

# PLASTIC P-TRAP - LESS ADAPTER

## »» 230 SERIES

### SPECIFICATION

Sioux Chief 230 Series P-Traps shall be installed where necessary in plumbing systems. Trap shall provide a liquid seal that prevents the back passage of gas without affecting the flow of sewage or wastewater through the system when installed in a properly vented DWV system. Trap shall include nuts and washers. IAPMO Listed. Designed in accordance with ASTM F409-12.

### MATERIALS

**Tubular/Nuts:** Polypropylene

**Washers:** Polyethylene, soft TPV

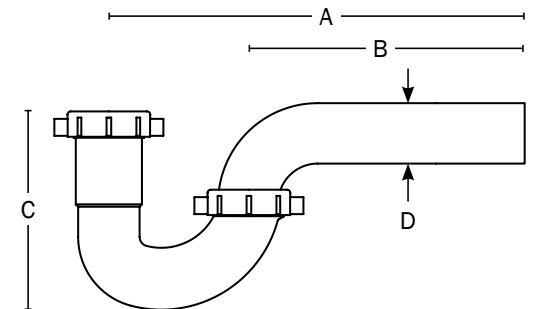
### DIMENSIONS

	-0105101	-0105201	-0115101
<b>A:</b> Overall length	11 $\frac{1}{8}$ "	11 $\frac{1}{8}$ "	11 $\frac{1}{8}$ "
<b>B:</b> Wall bend length	7 $\frac{1}{2}$ "	7 $\frac{1}{2}$ "	7 $\frac{1}{2}$ "
<b>C:</b> Height	4 $\frac{3}{4}$ "	4 $\frac{3}{4}$ "	4 $\frac{3}{4}$ "
<b>D:</b> Width	1 $\frac{1}{4}$ "	1 $\frac{1}{4}$ "	1 $\frac{1}{4}$ "

	-0115201	-0106101	-0106201
<b>A:</b> Overall length	11 $\frac{1}{8}$ "	11 $\frac{1}{4}$ "	11 $\frac{1}{4}$ "
<b>B:</b> Wall bend length	7 $\frac{1}{2}$ "	7 $\frac{1}{2}$ "	7 $\frac{1}{2}$ "
<b>C:</b> Height	4 $\frac{3}{4}$ "	5"	5"
<b>D:</b> Width	1 $\frac{1}{4}$ "	1 $\frac{1}{2}$ "	1 $\frac{1}{2}$ "

Dimensions are approximate and provided for reference only

ITEM # SUBMITTED	_____
JOB NAME	_____
LOCATION	_____
ENGINEER	_____
CONTRACTOR	_____
PO#	_____ TAG _____



Create Item Number

## 230-ABC

e.g. 230-0105101: 1 $\frac{1}{2}$ " White P-trap, 1/bag

#### COLOR A

**010** = P-Trap (white)

**011** = P-Trap (black)

#### SIZE B

**5** = 1 $\frac{1}{4}$ "

**6** = 1 $\frac{1}{2}$ "

#### WASHERS C

**101** = Polyethylene (standard) washers

**201** = Soft TPV washers