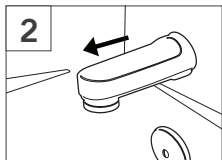
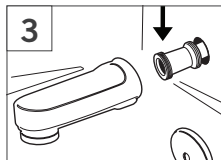


- **Thoroughly read all instructions** carefully before starting your installation. This product is designed to be used with Sioux Chief's SmartSpout to extend the tube length if the copper stub out coming out of the wall is too short.
- **Wear gloves and safety glasses.**
- **Before you start, protect your tub's surface using rags, towels or cardboard.**
- Repair adapter fits inside the ½" copper stub out in wall. Repair adapter can be soldered, however if soldering is not an option, it can be glued in place with specially formulated copper-to-copper, 2-step epoxy provided.
- Substituting the glue voids warranty.

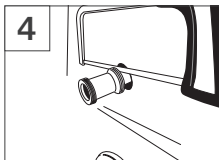
1 Make sure tub/shower valve is in OFF position.



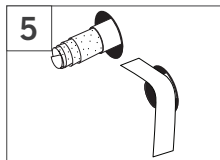
Remove old spout.



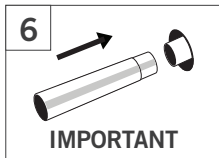
In some cases, a brass fitting from old spout is connected to ½" copper tube.



Remove old fitting with hacksaw, making sure to leave at least a 1¼" length of copper in the wall.



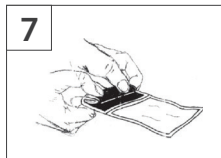
Thoroughly clean inside and outside of copper pipe at wall. Remove all burrs.



6

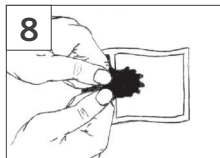
IMPORTANT

Dry fit repair adapter to make sure it fully slips into copper in wall.



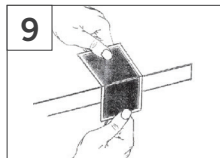
7

Roll pouch to force liquid epoxy toward burst seal.



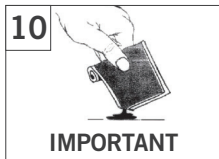
8

Squeeze and apply pressure to burst through seal.



9

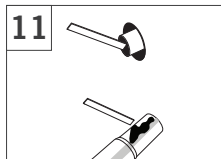
Mix thoroughly on edge of counter or table until well mixed.



10

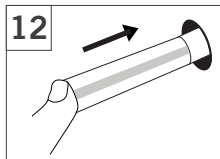
IMPORTANT

Cut corner and dispense. Mixture starts to harden within 1 minute.



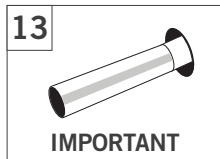
11

Using applicator stick, **quickly** apply epoxy to inside of pipe in wall and outside of reduced end of repair adapter.



12

Insert repair adapter into copper in wall.



13

IMPORTANT

Let epoxy set for 15 minutes. See SmartSpout installation instructions to finish spout replacement.