

Installation Instructions

Push Tite Toilet Installation Kit

Before Beginning:

- This kit is intended to work ONLY for installations that have 4" drain pipe serving the toilet. If you have 3" drain pipe, this kit will not work.
- If you simply need to repair a cracked or broken flange ring, consider using a repair ring, like the Ringer™ stainless steel repair flange (available where this kit was purchased).
- Always be sure to follow all local plumbing codes during this and all plumbing projects.

1. Remove Toilet:

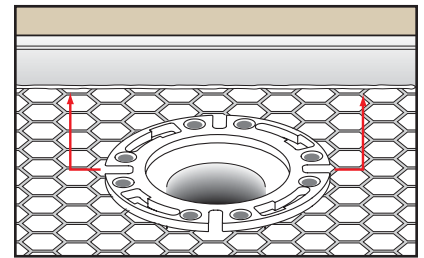
- Turn off main water supply.
- Flush tank, remove water from toilet bowl and tank with sponge or wet-vac.
- Disconnect supply line from toilet.
- Unbolt and carefully remove toilet.
- Remove old wax gasket from closet flange and bottom of toilet with putty knife.

2. Remove Existing Flange: (if necessary)

- Remove any screws that fasten the existing flange to the floor. Cast iron flanges should pull off of pipe.
- If you have plastic pipe and flange, use an inside pipe cutter to cut the existing flange (again, be sure you have 4" pipe) off the pipe. Make the cut as close as possible to the bottom of the existing flange's hub, or about 2.25" down (max) from the top of the flange.

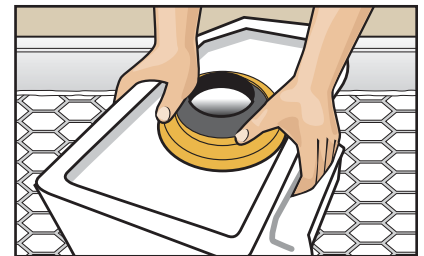
3. Install the Push Tite:

- Align the flange ring (as shown, right) so that the notches are exactly parallel with the wall behind the toilet.
- Maintaining alignment, insert the Push-Tite™ flange into the pipe evenly, making sure the red gasket inserts fully into the pipe.
- Fasten the flange ring to the floor using eight screws in the holes provided.



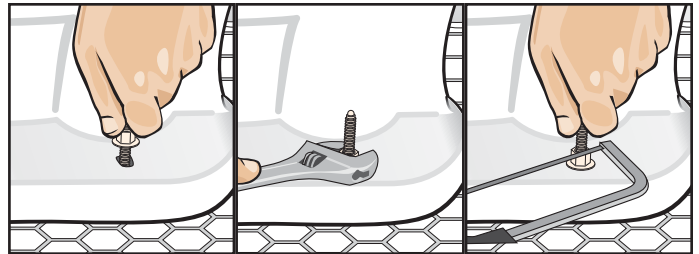
5. Install the Toilet:

- Insert the Plumb Perfect™ closet bolts into the two side notches.
- With toilet bowl in upside-down position, align and place the wax ring over the toilet outlet hole, with the black cone facing up (away from the toilet). Set wax ring in place just enough that it stays in place.
- Flip toilet bowl and lower over the flange slowly, making sure the closet bolts go through the bolt holes on the sides of the toilet base.
- Apply even pressure on toilet until wax ring is fully compressed and toilet base is flush to the floor.



6. Fasten toilet to floor:

- Install bolt-cap washers over closet bolts.
- Thread on nuts (evenly to each side) until both nuts are hand tight.
- Tighten the nuts an additional 1 to 2 full turns with wrench.
- Cut off excess bolt and cover with cap.



7. Check for leaks:

- Reconnect water supply line to toilet
- Turn on main water supply and allow toilet tank/bowl to fill.
- Flush toilet and check for any water around toilet base.



Supply · Drainage · Support · Testing · Specialties · Tools · Access

1-800-821-3944 www.siouxchief.com
#IS-887-GPTMK © 2009 Sioux Chief Manufacturing

**Sioux
Chief** 
MANUFACTURING SINCE 1957