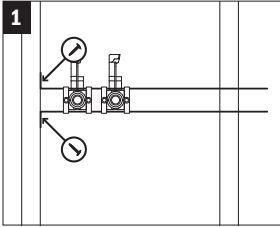
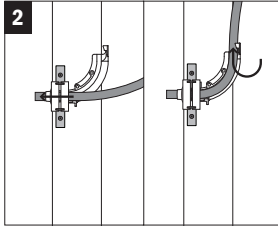


# StrongArm™ with Plastic Bend Support

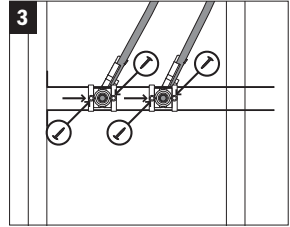
## Inside Mount Installation Instructions



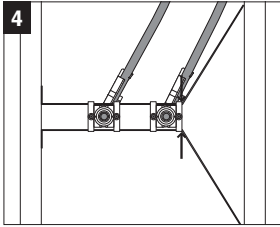
**1** Determine stub out height. Secure both brackets to one side of the stud bay.



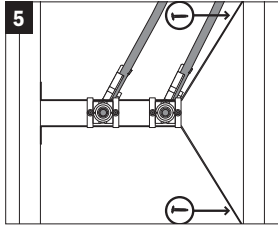
**2** Working from the back of the bracket, insert flexible tube through the nose of the front block then bend tube and capture in place at tail end of elbow.



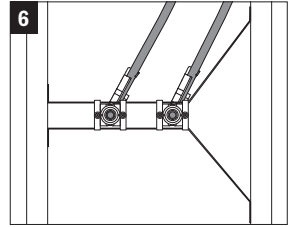
**3** Slide plastic elbow block assembly to desired stub out location. Insert two screws into each block and tighten. Tightening screws prevents lateral movement of blocks on brackets and prevents elbow from swiveling.



**4** Bend the loose ends of the StrongArm brackets as close as possible to the Plastic Bend Support in opposite directions.



**5** Secure each bracket with screws. Start with lower bracket to keep installation level.



**6** Installation complete.

14940 Thunderbird Road  
Kansas City, Missouri 64147

**P** 1.800.821.3944

**F** 1.800.758.5950

Patent # 8,061,390  
Patent # 8,141,831  
#IS-525-PBL 05/17

Supply | Drainage | Support

[www.siouxchief.com](http://www.siouxchief.com)

**TAKE THE FIELD.**

