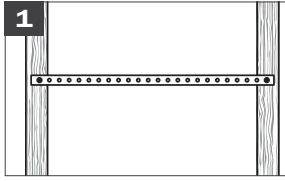


SimpleStrap™

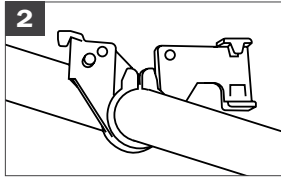
» Installation Instructions | Instrucciones de instalación Consignes d'installation



1 Attach flat Support Bracket to studs using nails or screws.

Fije la ménsula plana a los montantes con clavos o tornillos.

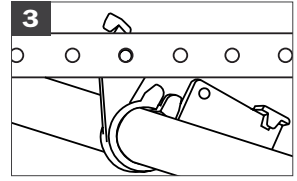
Fixer la console de support plate aux montants à l'aide de clous ou de vis.



2 Insert tube into SimpleStrap clamp.

Insérte el tubo en la abrazadera SimpleStrap.

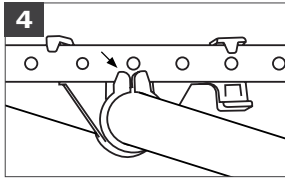
Insérer le tube dans la bride SimpleStrap.



3 Align tooth through one of the bracket holes, twist clamp counterclockwise, and click tabs onto bracket.

Alinee el diente a través de uno de los orificios de la ménsula, gíre la abrazadera a la izquierda y encaje las lengüetas en la ménsula.

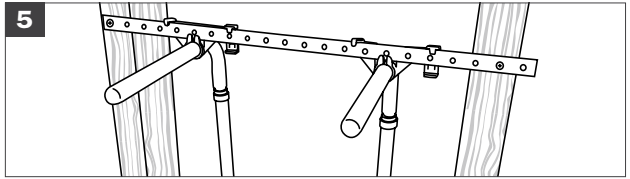
Aligner la dent à travers l'un des trous de console, tourner la bride en sens antihoraire et enclencher les languettes sur la console.



4 Note: The ears of the clamp should lock on the front of the bracket.

Nota: Las orejas de la abrazadera deben trabarse al frente de la ménsula.

Remarque : les oreilles de la bride doivent se verrouiller sur l'avant de la console.



5 Completed installation.

Instalación terminada.

Installation terminée.

⚠ **WARNING:** Cancer and Reproductive Harm
⚠ **ADVERTENCIA:** Cáncer y Daños Reproductivos
⚠ **ADVERTISSEMENT:** Cancer et effets néfastes sur la reproduction

www.P65Warnings.ca.gov



C

#IS-SIMPLESTRAP – 10/18

Supply

Drainage

Support

Specialties

www.siouxchief.com

14940 Thunderbird Road
Kansas City, MO 64147
P 1.800.821.3944
F 1.800.758.5950

