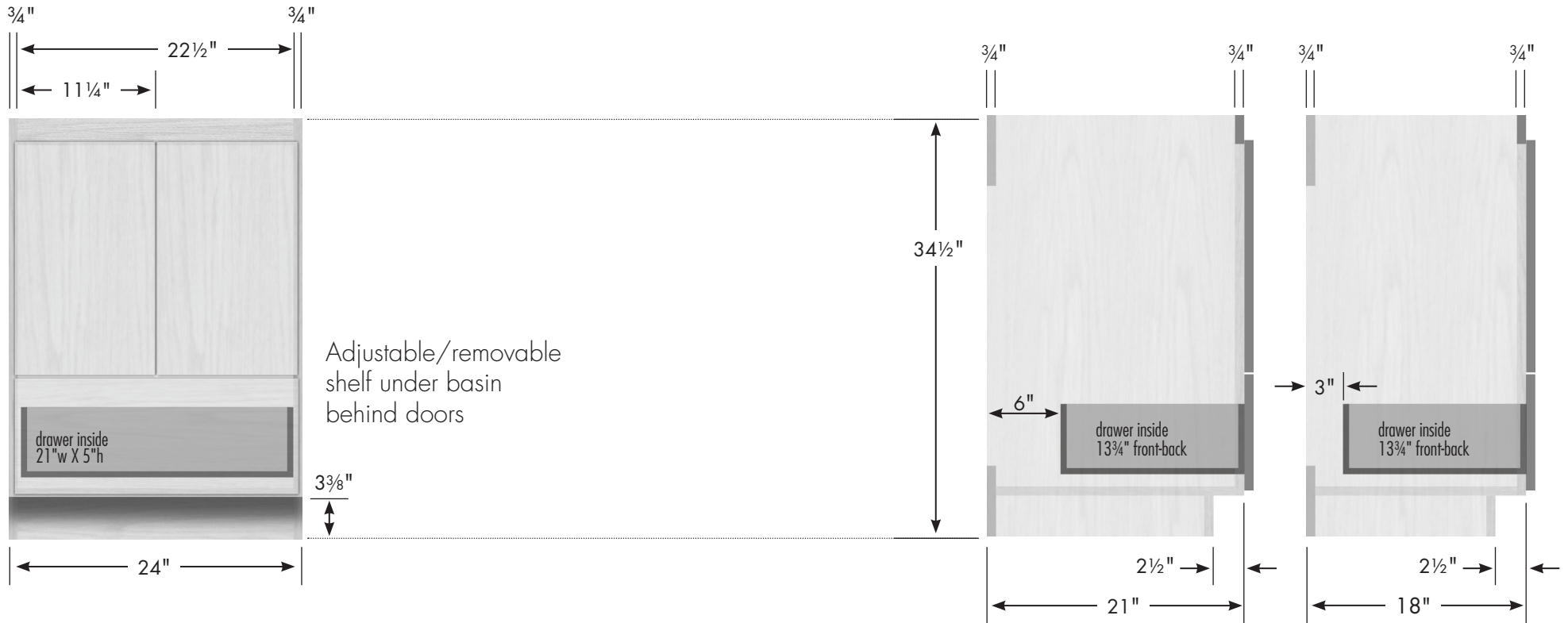
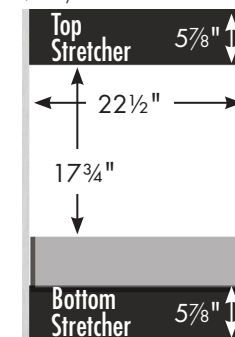


# STRASSER

**34½" tall Montlake Vanity/Linen Lower  
24" wide, no side drawers**



Vanity back clear openings for plumbing  
(may need to cut adjustable shelf)



**24" Montlake Vanity/  
Linen Lower  
No Side Drawers**  
24" wide  
34½" tall  
21" or 18" front-to-back

