

Optimus® Laboratory Recessed Wall-Mounted Eyewash and 10 in. Drench Shower

EYEWASH FEATURES:

- Wall-mounted fully recessed cabinet
- 16 in. arm
- (2) Aerated Optimus spray heads with integrated dust caps
- Brass, chrome-plated valve
- Swing activated
- ½ in. NPT female inlet
- Stainless Steel with satin finish cabinet
- 2.4 gpm @ 30 psi
- Universal emergency sign included

SHOWER FEATURES:

- 10 in. flanged stainless steel shower head
- High performance stainless steel emergency shower head
- Built in drain allows head to drain completely
- Integral flow controls
- 1 in. NPT female brass, chrome plated valve
- Full flow stay-open ball valve
- 1 in. IPS steel pipe nipple and union connections
- 1 in. NPTF inlet
- Stainless steel lever with black plastic rotating handle activator

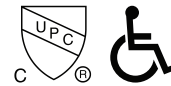


STOCK FINISHES:



PC

Cabinet is brushed stainless steel. Swing down valve is chrome.



STANDARDS:

- ANSI/ISEA Z358.1 certified

WARRANTY:

Visit www.speakman.com for full product warranty information

- 3 Year Limited Warranty (commercial)

Eyewash Flow Rates:

FLOW PRESSURE PSI (BAR)	30 (2.07)
FLOW RATE GPM (LPM)	2.4 (9.08)

Emergency Shower Flow Rates:

FLOW PRESSURE PSI (BAR)	15 (1.03)	20 (1.37)	25 (1.72)	30 (2.07)	35 (2.41)	40 (2.75)
FLOW RATE GPM (LPM)	16 (61)	18 (68)	19 (72)	20 (75)	21.4 (79)	22 (83)

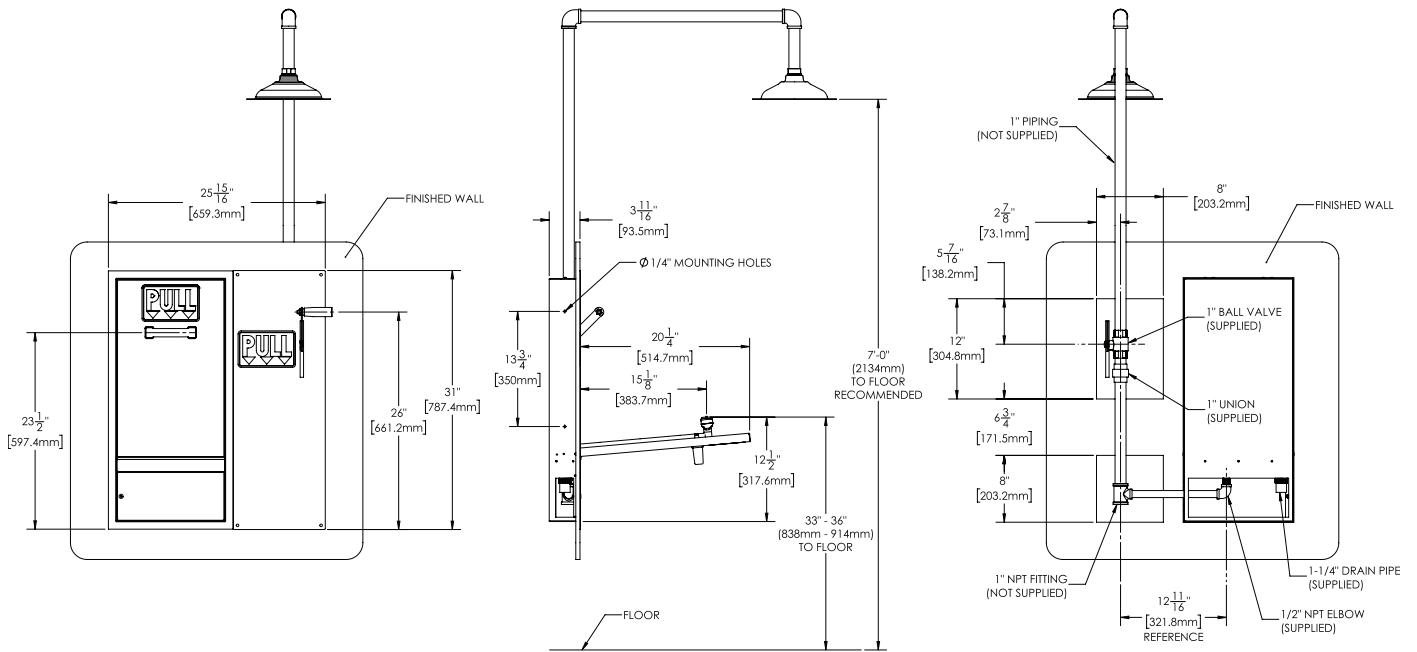
All dimensions are in inches (millimeters) unless otherwise specified and are subject to change without notice.

Architect/Engineer Approval Space:

Information continues on next page

P: 800-537-2107
 F: 800-977-2747
 W: WWW.SPEAKMAN.COM
 R: 02-NOVEMBER 2019

Optimus® Laboratory Recessed Wall-Mounted Eyewash and 10 in. Drench Shower



All dimensions are in inches (millimeters) unless otherwise specified and are subject to change without notice.

Architect/Engineer Approval Space:

P: 800-537-2107
 F: 800-977-2747
 W: WWW.SPEAKMAN.COM
 R: 02-NOVEMBER 2019