

SentinelPro™ Diverter Trim and Vandal Resistant Shower Combination (Valve not included)

FEATURES:

- CPT-5401: Diverter Shower Valve Trim
- S-2280: Vandal Resistant Wall-Mounted Shower Head

VALVE OPTIONS:

- CPV-TP-DV: Thermostatic/Pressure Balancing Diverter Valve
Sweat & Thread Connections
- CPV-TP-DV-PXC: Thermostatic/Pressure Balancing Diverter Valve
PEX F1807 Crimp Inlet Connections
- CPV-TP-DV-PXE: Thermostatic/Pressure Balancing Diverter Valve
PEX F1960 Cold-Expansion Inlet Connections

STOCK FINISHES:



PC

STANDARDS:

- ASME A112.18.1/CSA B125.1 certified

WARRANTY:

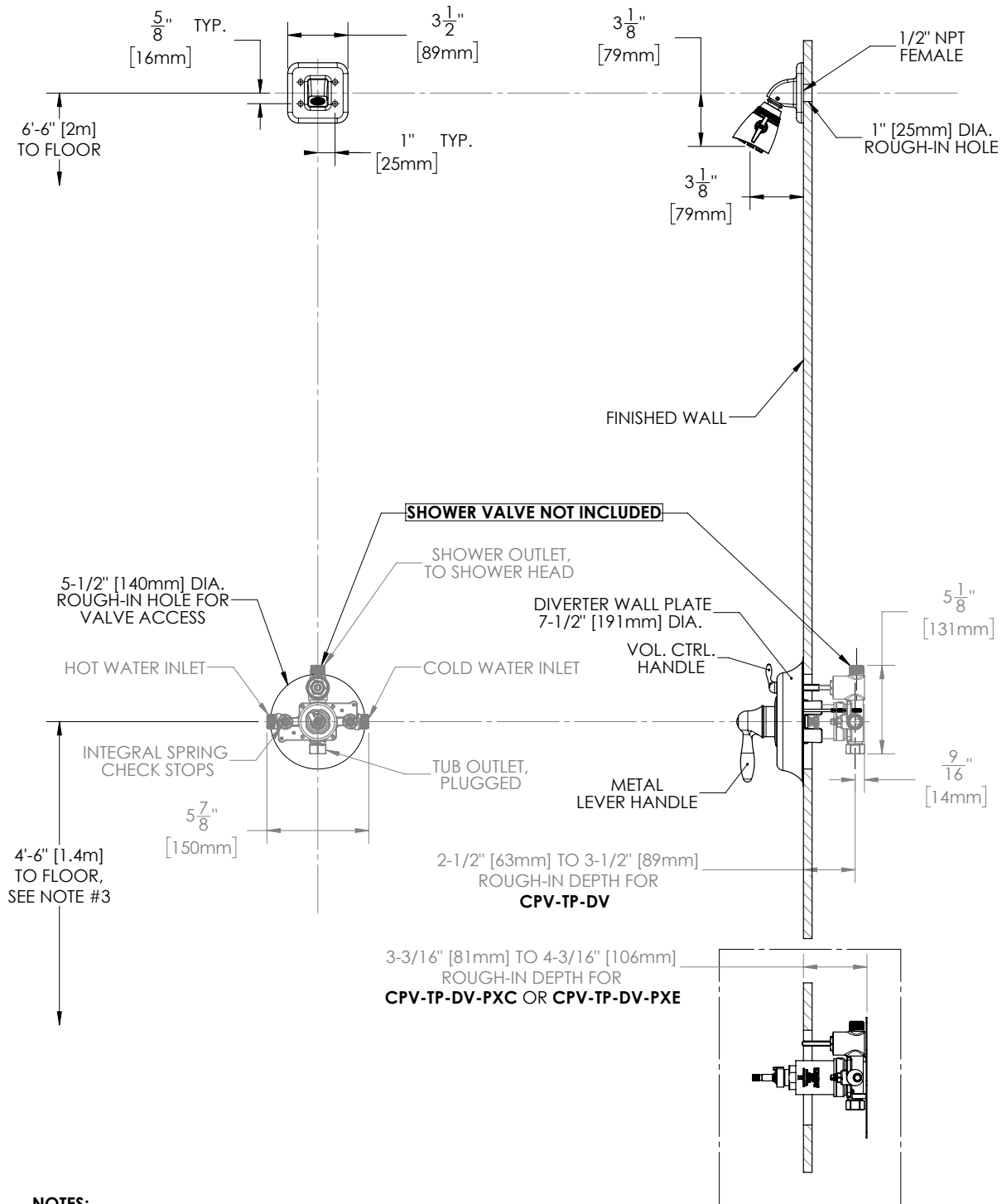
Visit www.speakman.com for full product warranty information

- See Speakman.com For Warranty Information



Information continues on next page

SentinelPro™ Diverter Trim and Shower Combination (Valve not included)



NOTES:

1. ALL DIMENSIONS ARE IN INCHES (MILLIMETERS) UNLESS OTHERWISE SPECIFIED AND ARE SUBJECT TO CHANGE WITHOUT NOTICE.
2. ALL INLETS AND OUTLETS ARE 1/2" FEMALE COPPER SWEAT AND 1/2" MALE NPT UNLESS OTHERWISE SPECIFIED.
3. FOR ADA MOUNTING LOCATIONS CONSULT ADAAG, ANSI A117.1, OR STATE REGULATIONS.