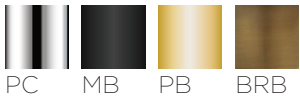


## Proper High Rise Wall Mount Kitchen Faucet

### FEATURES:

- Lead-free brass construction
- Two hole mount
- 8" on center rear mounting
- 1.8 gpm (7.6 L/min) flow rate
- Lever handle
- Ceramic cartridge
- 1/2" NPT female inlets supply connection (adapter)
- Corrosion resistant finishes

### STOCK FINISHES:



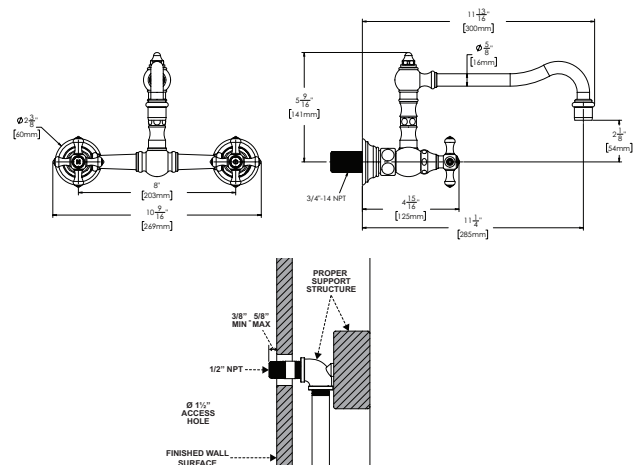
### STANDARDS:

- ASME A112.18.1/CSA B125.1 certified
- NSF/ANSI 61 certified
- NSF/ANSI 372 certified
- CEC certified
- DOE certified

### WARRANTY:

Visit [www.speakman.com](http://www.speakman.com) for full product warranty information

- 5 Year Limited Warranty (commercial)
- Limited Lifetime Warranty (residential)



1. All dimensions are in inches (millimeters) unless otherwise specified and are subject to change without notice. 2. Contractor to supply necessary inlet connections.

Architect/Engineer Approval Space:

P: 800-537-2107  
 F: 800-977-2747  
 W: WWW.SPEAKMAN.COM  
 R: 01-JULY 2020