

SentinelPro™ Vandal Resistant Shower Combination (Valve not included)

## FEATURES:

- CPT-5001: Shower Valve Trim
- S-2280: Vandal Resistant Wall-Mounted Shower Head

## VALVE OPTIONS:

- CPV-TP: Thermostatic/Pressure Balancing Valve  
Sweat & Thread Connections
- CPV-TP-PXC: Thermostatic/Pressure Balancing Valve  
PEX F1807 Crimp Inlet Connections
- CPV-TP-PXE: Thermostatic/Pressure Balancing Valve  
PEX F1960 Cold-Expansion Inlet  
Connections

## STOCK FINISHES:



PC

## STANDARDS:

- ASME A112.18.1/CSA B125.1 certified

## WARRANTY:

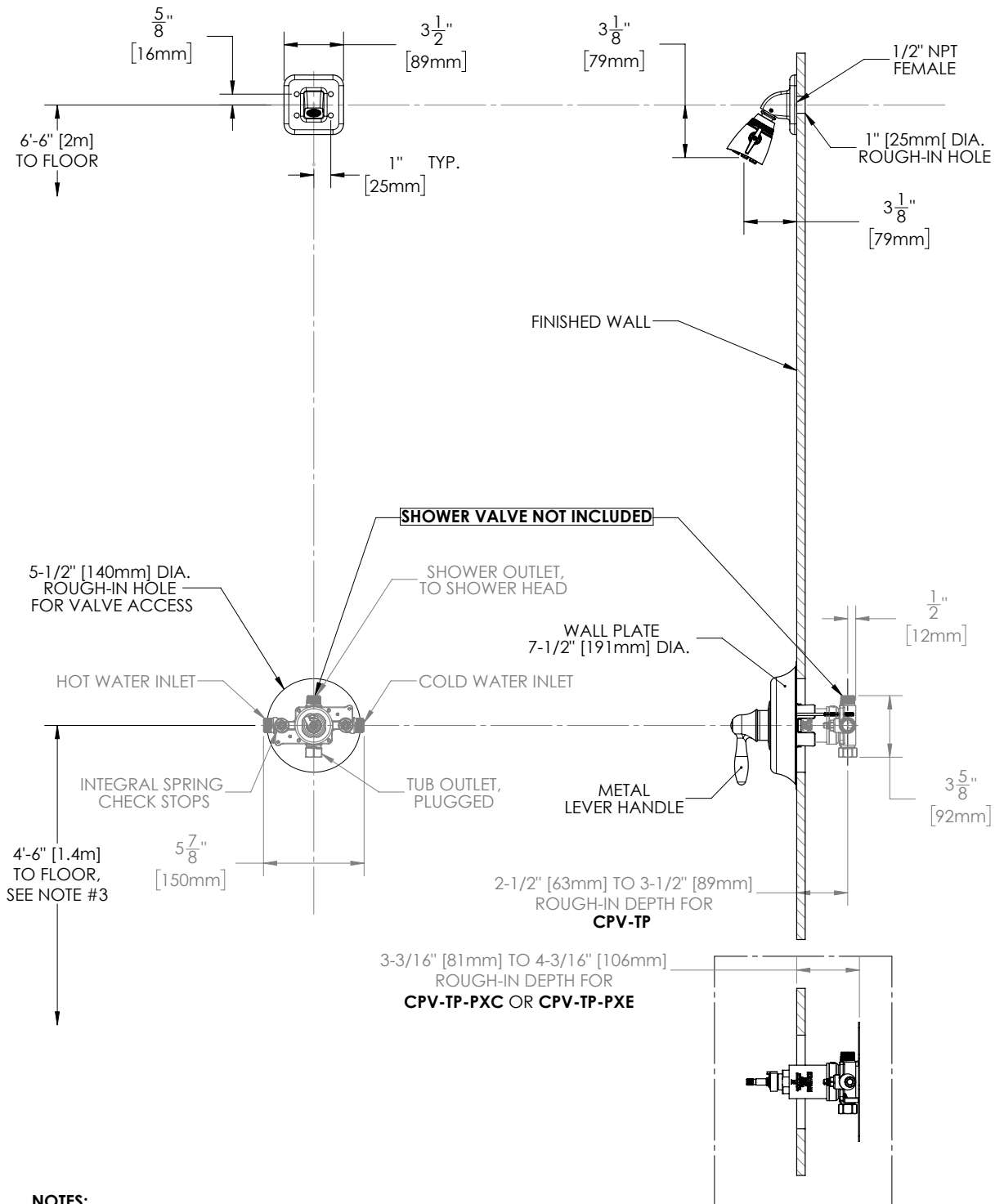
Visit [www.speakman.com](http://www.speakman.com) for full product warranty information

- See [Speakman.com](http://Speakman.com) For Warranty Information



Information continues on next page

## SentinelPro™ Vandal Resistant Shower Combination (Valve not included)



### NOTES:

1. ALL DIMENSIONS ARE IN INCHES [MILLIMETERS] UNLESS OTHERWISE SPECIFIED AND ARE SUBJECT TO CHANGE WITHOUT NOTICE.
2. ALL INLETS AND OUTLETS ARE 1/2" FEMALE COPPER SWEAT AND 1/2" MALE NPT UNLESS OTHERWISE SPECIFIED.
3. FOR ADA MOUNTING LOCATIONS CONSULT ADAAG, ANSI A117.1, OR STATE REGULATIONS.