



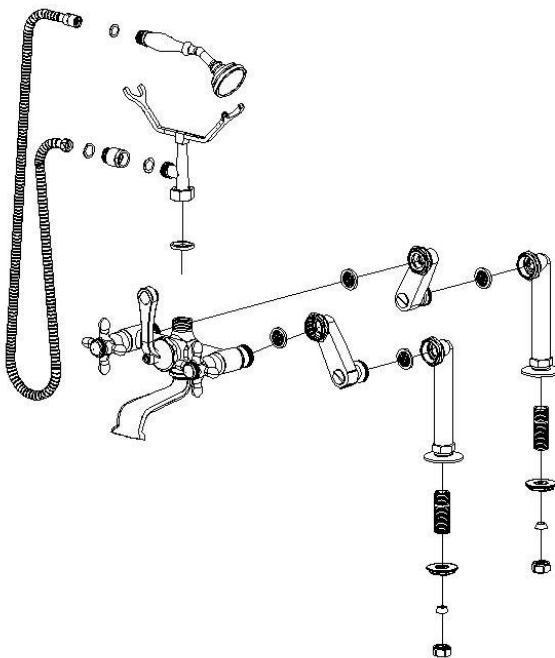
Installation Information

Item #P0626

Deck Mount British Telephone Faucet with Variable Centers to 12" Maximum

Warranted only when installed by a qualified, licensed plumber. Please use Teflon tape on all threaded connections.

1. Shut off the water supply to the fixture before installation.
2. Connect the shorter threaded ends of the hook-up nipples to the deck mount couplers. Loosely attach the deck mount coupler nuts to the adjustable arm. Loosely tighten the swing arm coupler to the faucet body for adjusting the centers. Insert the faucet through the 2 holes in the deck. Screw the lock nuts onto the threaded nipples and tighten.
3. Tighten the nuts of the deck mount couplers to the faucet body.
4. Place the washer inside the brass nut at the bottom of the cradle and then connect the cradle to the faucet. Tighten the nut.
5. Attach the vacuum breaker to the outlet of the cradle and then connect the nut end of the hose to the vacuum breaker. Attach the tapered end of the hose to the hand shower. Place the hand shower on the cradle.
7. Make no adjustments to valves or valve stems. They are tested at the factory for optimum performance.



Parts Included:

- Faucet Body
- Modified Swing Arm Couplers
- Deck Mount Couplers w/Screen Washers (pair)
- Nipple hook-up kit
- Inlet Cradle
- Vacuum Breaker
- Handheld Shower w/Hose and washers