

Strom Plumbing

BY
Sign of  the Crab

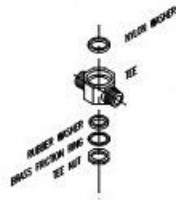
Ph: (916) 638-2722 / Fax: (916) 638-2725

Installation Information

Widespread Lavatory Faucet

Warranted only if installed by a qualified licensed plumber. Use Teflon tape on all threaded connections.

1. Shut off the water supply valves before installation.
2. Insert spout shank through the spout ring, if your set came with one, and the center hole. Place washer on spout with nut. Hand tighten, align spout and wrench tighten.
3. Crosshandled sets have two like valves. Place the bottom lock down nut and thin washer onto valve body. Then, from the underside, insert valve bodies through deck and hand tighten the top hold down nut and thin washer cup onto the valve body. Place the escutcheon onto the stem and adjust the vertical height of the valve stem with the hold down nuts. The distance from the bottom of the handle to the top of the escutcheon should be 1/8" when the valve is off. Wrench tighten the hold down nuts.
4. Place the escutcheon on the stem and tighten.
5. Assemble the tee to spout shank with washers and seals as shown. Wrench tighten.



6. Attach supply lines to bottom of valves. Wrench tighten.
7. Connect the stainless steel flex lines to the valve bodies and the tee. Wrench tighten until sealed.
8. Unscrew the flange from the pop-up body. Insert the pop-up body through the sink drain hole and hand tighten the flange to the body. With the ball rod facing towards the back, wrench tighten the lock nut. Insert the pop-up plunger through the collar.
9. Insert the pop-up rod with knob through the faucet pop-up hole. Insert the pop-up rod through the strap. Adjust for best operation and tighten the set screw.
10. Turn on the water supply. Remove the aerator from the end of the spout and flush hot and cold lines until the water is clear. Attach the aerator and enjoy your beautiful faucet.
11. Make no adjustments to valves or valve stems. They are tested at the factory for optimum performance.

All Strom Plumbing Widespread Lavatory Sets include a pop-up drain assembly. The spout and valves are separate units joined by the provided 12" long flex lines.

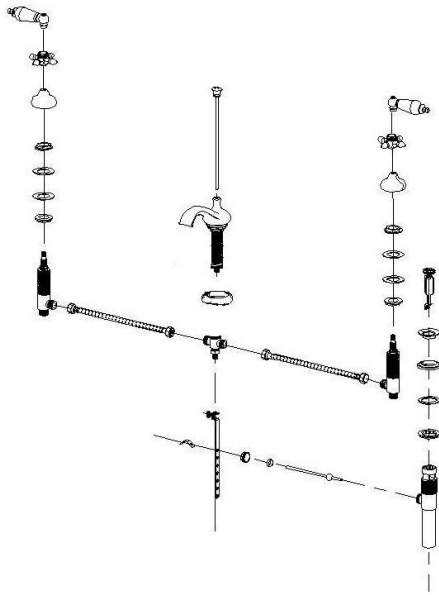
Minimum centers are 8"
Maximum counter thickness is 1 1/2"
Minimum deck hole size needed is 1 1/4"

WIDESPREAD LAVATORY FAUCETS

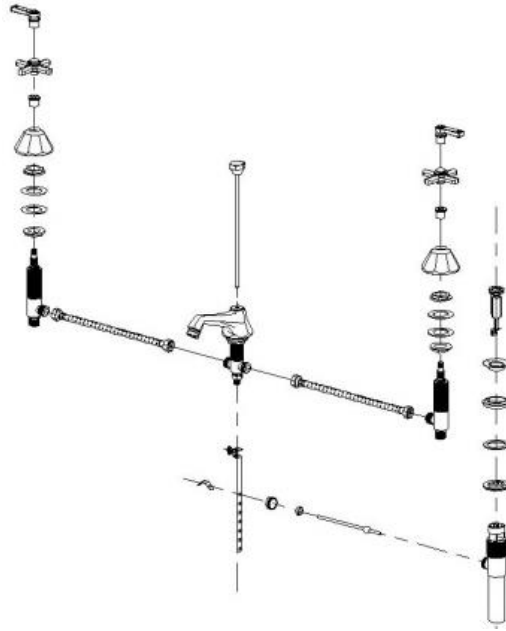
Minimum hole size for installation is 1 1/4". Maximum counter thickness is 1 1/2"

MISSISSIPPI SERIES	Spout Extension	Spout Height	Spout Base	Esc Diameter	Escutcheon Height	Handle Length
P0152	5 1/2"	3 1/2"	2 1/2"	2 7/8"	1 7/8"	3 1/4"
P0805	5 1/2"	3 1/2"	2 1/2"	2 7/8"	1 7/8"	2 1/16"
P0981	5 1/2"	3 1/2"	2 1/2"	2 7/8"	1 7/8"	3"
RIO GRANDE SERIES	Spout Extension	Spout Height	Spout Base	Esc Diameter	Escutcheon Height	Handle Length
P0588	7 1/2"	6 1/2"	2 1/4"	2 1/2"	1 3/4"	3"
P0888	7 1/2"	6 1/2"	2 1/4"	2 1/2"	1 3/4"	3 1/8"
P1033	7 1/2"	6 1/2"	2 1/4"	2 1/2"	1 3/4"	3 1/4"
SACRAMENTO SERIES	Spout Extension	Spout Height	Spout Base	Esc Diameter	Escutcheon Height	Handle Length
P0104**	5"	4 7/8"	2" / 2 1/2"	2 1/4"	1 1/2"	4"
P0140**	5"	4 7/8"	2" / 2 1/2"	2 1/4"	1 1/2"	3 1/4"
P0188	5"	4 7/8"	2" / 2 1/2"	2 7/8"	1 3/4"	3 1/4"
P0188X	5"	4 7/8"	2" / 2 1/2"	2 7/8"	1 3/4"	3 1/4"
P0820**	5"	4 7/8"	2" / 2 1/2"	2 7/8"	1 3/4"	3 1/4"
ST. LAWRENCE SERIES	Spout Extension	Spout Height	Spout Base	Esc Diameter	Escutcheon Height	Handle Length
P0345	4 1/2"	4 1/2"	2 3/4"	2 3/4"	2"	3 1/4"
P0346	4 1/2"	4 1/2"	2 3/4"	2 3/4"	2"	2 7/8"
P0347	4 1/2"	4 1/2"	2 3/4"	2 3/4"	2"	2 1/2"
P1008	4"	12"	2 3/8"	2 3/4"	2"	4"
THAMES SERIES	Spout Extension	Spout Height	Spout Base	Esc Diameter	Escutcheon Height	Handle Length
P0376	5 1/2"	4"	2 3/4"	2 1/2"	1 3/4"	3 1/4"
P0377	5 1/2"	4"	2 3/4"	2 1/2"	1 3/4"	3 1/2"
P0378	5 1/2"	4"	2 3/4"	2 1/2"	1 3/4"	3 1/8"
P0821	5 1/2"	4"	2 3/4"	2 1/2"	1 3/4"	3"
**Includes 7/8" spout ring						

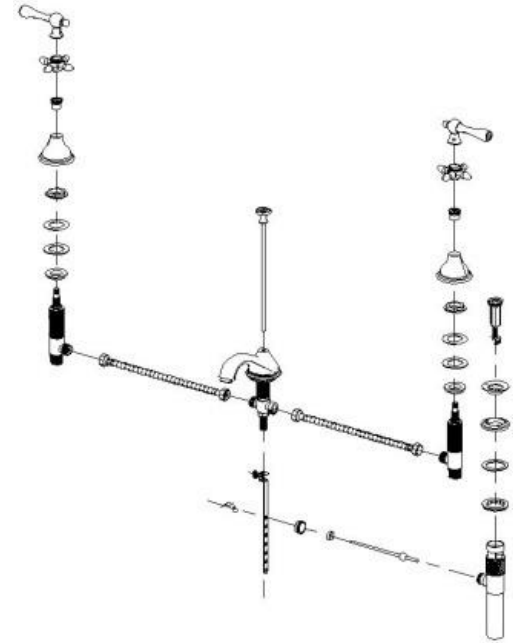
Sacramento Series



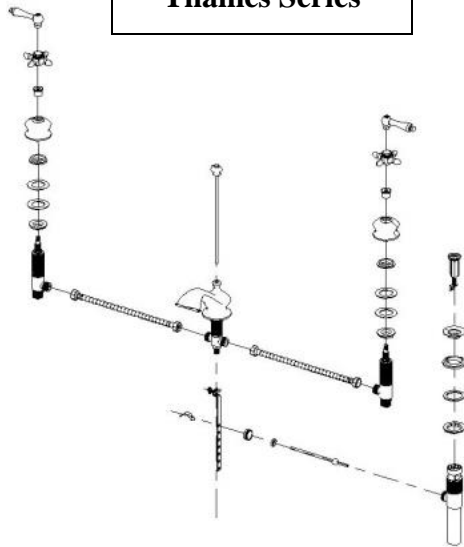
Mississippi Series



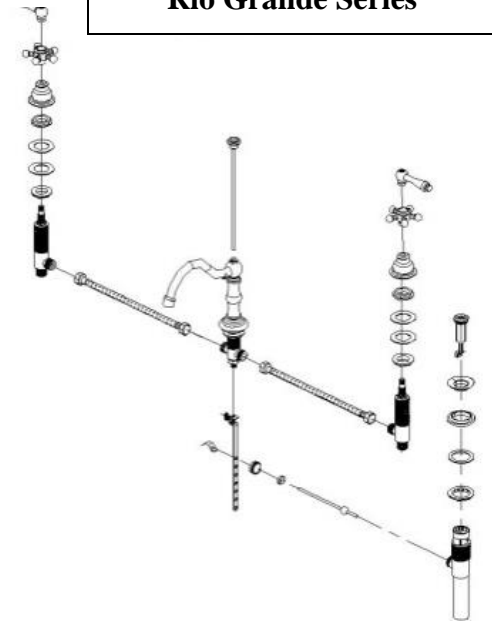
St. Lawrence Series



Thames Series



Rio Grande Series



All Strom Plumbing Widespread Lavatory Sets include a pop-up drain assembly. The spout and valves are separate units joined by the provided 12" long flex lines.

Minimum centers are 8"
Maximum counter thickness is 1 1/2"
Minimum deck hole size needed is 1 1/4"