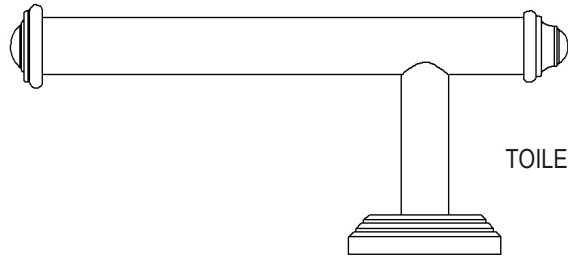


DESIGNER SERIES HANA COLLECTION TOILET PAPER HOLDER



TOILET PAPER HOLDER



MOUNTING SCREW PLATE



SET SCREW



MOUNTING SCREWS (2)



DRY WALL ANCHORS(2)

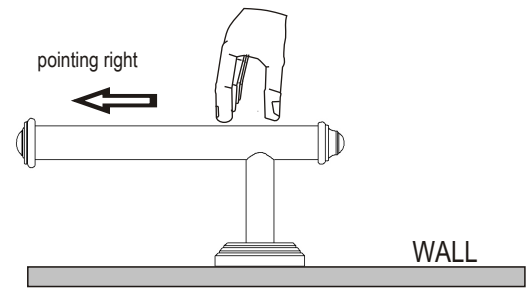


ALLEN KEY

INSPECTED BY _____

KEEP THIS INSTRUCTION BOOKLET FOR FUTURE REFERENCE

- 1- Take the toilet paper holder out of the box.
Place the post against the assigned wall location.
Make sure that the holder is leveled and pointed to the right.
Mark the holder post position and remove the trim.



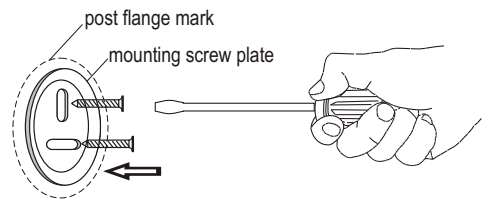
- 2- Using the Allen key provided, remove the mounting screw plate from the holder post.

Press the mounting screw plate against marked post position on the wall and mark the screw hole positions.

2a- INSTALLING ON WOODEN SURFACE

- For wooden surface, the mounting screw plate can be secured by screwing the screws directly into the wall.

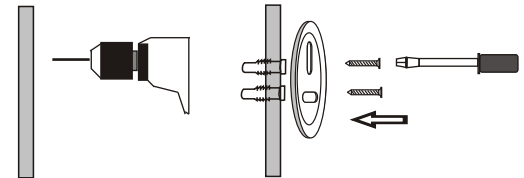
WOODEN SURFACE



2b- INSTALLING ON A DRYWALL

- Using a drill, pre-drill holes for the anchors.
- Insert the anchors into the wall.
- The mounting screw plate can be secured by screwing the screws into the anchors.

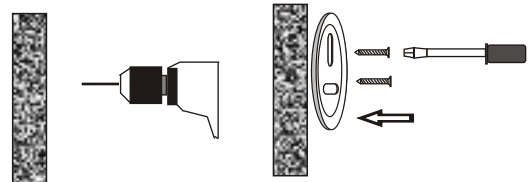
DRY WALL SURFACE



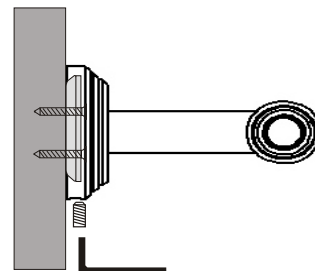
2c- IF INSTALLING ON A SOLID/HARD SURFACE

- Measure the dimensions carefully.
- Using a drill, pre-drill the holes.
- Secure the mounting screw plate by screwing the screws into the wall.

HARD SURFACE



- 3- Press the post against the mounting screw plate. Align the holder and secure it by tightening the set screw.



- 4- Check the holder post to make sure it is firmly secured. If not, tighten the set screw with the Allen key.