



SharkBite® Temperature & Pressure Gauges

DESCRIPTION

The SharkBite® Temperature and Pressure Gauges are used to measure water conditions in domestic potable water and radiant heating systems.

FEATURES AND BENEFITS

Instant push-fit connection for increased ease-of use:
No soldering, clamps, unions, or glue required.

Gauges can be installed as a reusable or permanent device.

SharkBite push-to-connect fitting fits copper tubing, and CTS, CPVC, PEX and PE-RT:
Connects all three types in any combination.

SharkBite push-fit fitting is design certified to ASSE 1061 NSF/ANSI 61 product standard for use in potable water and hydronic heating water distribution:
Quality engineered and manufactured.

SharkBite push-fit fitting contains integral tube liner for PEX installations:
Integrated design means no loose components, ensures secure, reliable connection.

SPECIFICATION

The SharkBite Temperature and Pressure Gauges are designed for use with SharkBite® Push-To-Connect (PTC) fittings. The tube assembly shall be inserted into the fitting. In the first stage through a release collar and then through a stainless steel grab ring. The grab ring has teeth that open out and grip onto the tube. At the second stage the tube shall be pushed through an O-ring protector which aligns the pipe. A specifically formulated EPDM O-ring shall be compressed between the wall of the fitting and the tube before the end of the pipe reaches the pipe stop. Only when the pipe has passed through the O-ring and reached the pipe stop shall a secure joint be created. The gauge shall be a SharkBite Gauge.



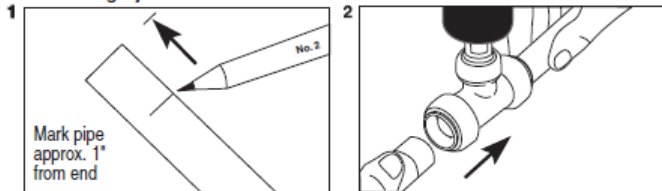
24436



24437

TYPICAL INSTALLATION

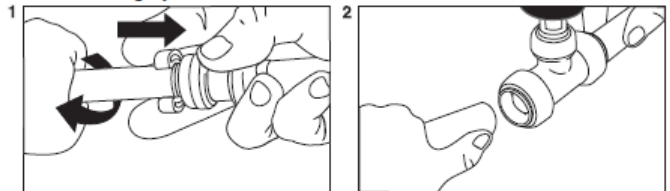
Connecting a joint:



1 Mark pipe approx. 1" from end
 2 Push the pipe firmly with a twisting action until it clicks.
 Allow 1" clearance between the fitting and the wall for disconnection.

(Please consult with local plumbing codes concerning specific water heater piping requirements.)

Disconnecting a joint:



1 Push the disconnecting clip against the release collar and pull the pipe with a twisting action.
 2





SharkBite[®] Temperature & Pressure Gauges

SPECIFICATION DATA

Performance:

Maximum pressure 200psi
 Maximum temperature (w/Tee) 200°F
 Maximum temperature (without Tee) 250°F
 Service Potable water

Tee Materials:

Body DZR brass
 O-ring..... EPDM
 Grab ring Stainless steel
 Tube support liner Veradel

Pressure Gauge Materials and Performance:

Case Drawn steel, black finished.
 Ring Drawn steel, black finished.
 Lens..... Acrylic.
 Dial Aluminum, white finished with black markings.
 Pointer Black, non-adjustable.
 Movement..... Brass with precision-milled teeth.
 Tube & Socket..... Brass
 Accuracy..... ±3% (ASME B40.100 Grade B).
 Process Temperature..... 40° to 150°F
 Ambient Temperature..... -40° to 140°F
 Pressure Range 0 to 200psi

Temperature Gauge Materials:

Case & Ring Hermetically sealed 300 series stainless steel.
 Lens..... Double strength glass standard, with polycarbonate.
 Dial Aluminum with white finish and black markings.
 Stem 300 series stainless steel, 0.250".
 Temperature range..... 0°F to 250°F
 Accuracy..... ±1% full range
 Ambient Temperature..... -40 to 250°F

CERTIFICATIONS

The SharkBite PTC fittings have been design certified and listed to ASSE1061, NSF/ANSI 61 and NSF 372. The SharkBite PTC fittings are listed by IAPMO and are certified for potable and hydronic heating water distribution (note: Glycol mixture for hydronics is acceptable up to and including 100% concentration). The SharkBite PTC fittings have been certified for underground applications and as a manufactured joint without access panels and they meet UPC, IPC and cUPC requirements.

CONNECTIONS

PRESSURE GAUGES	
with 1/2" Tee Lead Free	24436
with 3/4" Tee Lead Free	24438
with 1" Tee Lead Free	24440
with 1/2" CTS Lead Free	24442
with 3/4" CTS Lead Free	24444

TEMPERATURE GAUGES	
with 1/2" Tee Lead Free	24437
with 3/4" Tee Lead Free	24439
with 1" Tee Lead Free	24441
with 1/2" CTS Lead Free	24443
with 3/4" CTS Lead Free	24445

