

ECLISSI™ PRESSURE BALANCE TRIM WITHOUT DIVERTER

EC10W1IW

FEATURES

- 16 outer handle and inner accent finish combinations
- Outer handle finish and trim plate finish are always the same
- Single lever control
- Trim for concealed pressure balance rough valve without diverter
- Brass construction
- Must order RCT-1 rough valve to complete

COLORS/FINISHES

Faucet and handle finishes:

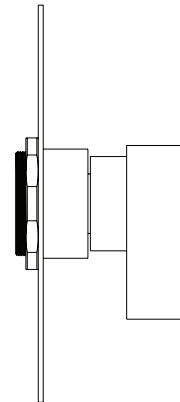
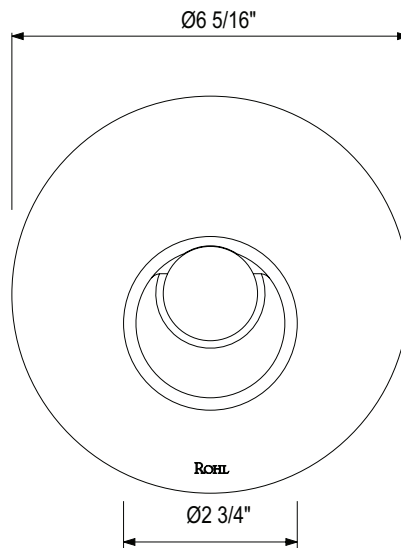
- Polished Chrome
- Satin Nickel
- Matte Black*
- Satin Gold*

Accent finish options:

- Polished Chrome
- Satin Nickel
- Matte Black*
- Satin Gold*

WARRANTY

- Limited Lifetime
- (*) 5-Year Limited Warranty



INSTALLATION INSTRUCTIONS

POLISHED CHROME Spout and outer handle



U-spout



C-spout

Inner accent finish options



Polished Chrome



Satin Nickel



Matte Black



Satin Gold

SATIN NICKEL Spout and outer handle

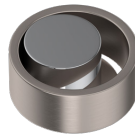


U-spout

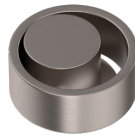


C-spout

Inner accent finish options



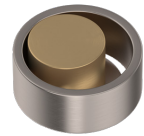
Polished Chrome



Satin Nickel



Matte Black



Satin Gold

MATTE BLACK Spout and outer handle



U-spout



C-spout

Inner accent finish options



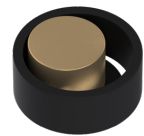
Polished Chrome



Satin Nickel



Matte Black



Satin Gold

SATIN GOLD Spout and outer handle



U-spout

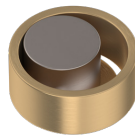


C-spout

Inner accent finish options



Polished Chrome



Satin Nickel



Matte Black



Satin Gold