

ROUGH VALVE FOR FLOOR MOUNTED PILLAR TUB FILLER

ROHL Bath

R922390000

FEATURES

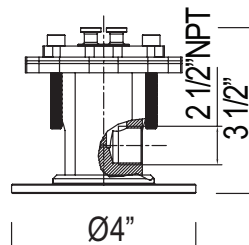
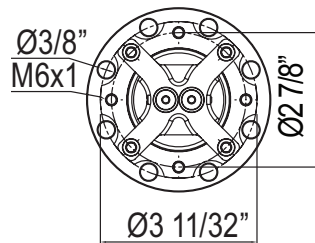
- Single Piece Rough Valve
- 1/2" F NPT inlets/outlets
- 3 1/2" height
- Rough must be recessed under the finished floor
- 3 11/32" diameter
- Brass construction
- Must order trim to complete
- Authentically Crafted in New Zealand

COLORS/FINISHES

- Rough Only

WARRANTY

- Limited Lifetime

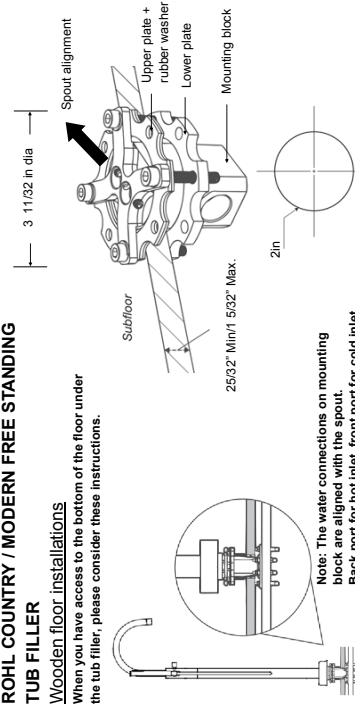


INSTALLATION INSTRUCTIONS

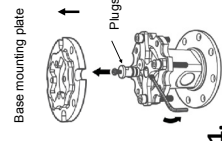
ROHL COUNTRY / MODERN FREE STANDING TUB FILLER

Wooden floor installations

When you have access to the bottom of the floor under the tub filler, please consider these instructions.



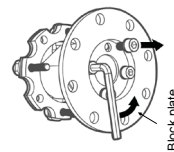
Note: The water connections on mounting block are aligned with the spout. Back port for hot inlet, front port for cold inlet.



- Remove base mounting plate. (Do not lose.)
 - Temporary remove plugs and grub screws.
 - Temporary fit faucet to mounting block to ensure correct alignment of the spout.

Note: The water connections on mounting block are aligned with the spout.

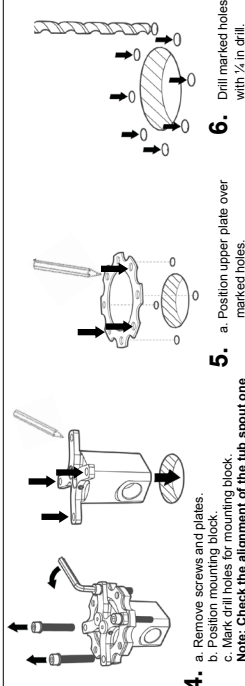
Note: The water connections on mounting block are aligned with the spout.



- Verify the distance of the faucet from the bath to insure that the water will flow into the bath.
 - Cut hole in wood floor 2 inch diameter. Floor min 25/32 - Max 1 5/32.

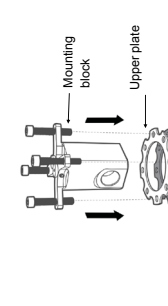
Note: Wood floor area top, bottom + inside hole needs to be sealed for protection from any moisture.

Note: Wood floor area top, bottom + inside hole needs to be sealed for protection from any moisture.



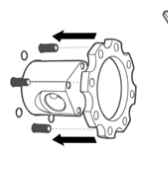
- Remove screws and plates.
 - Position mounting block.
 - Mark drill holes for mounting block.

Note: Check the alignment of the tub spout one last time before positioning the mounting block.
- Position upper plate over marked holes.
 - Mark drill holes for upper plate.
- Drill marked holes with 1/4" in drill.

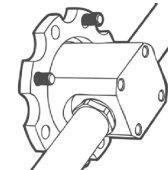


- Install the rubber washer then the upper plate and install the mounting block over drill holes.
 - Install screws into mounting block and through upper plate/washer.

Note: Arrow for approx faucet spout.

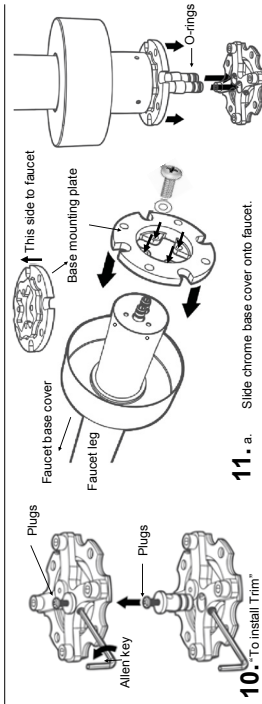


- From under floor: Install lower plate.
 - From above floor: Install clamping screws to lower plate and tighten.



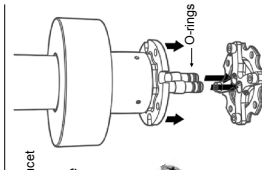
- Connect water supply to mounting block under wooden floor.

Note: There are no shutoffs, but the hot and cold supplies do have plugs to remain in place during construction.

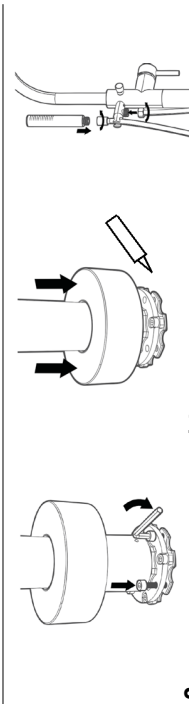


- To install Trim: After the finish floor is in place, install the water supply. Remove plug and grub screws.
 - Slide chrome base cover onto faucet. Screw the base mounting plate to faucet base with the 4 screws and washers supplied and tighten.

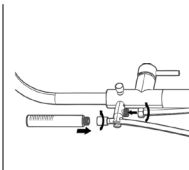
Note: Flat side of plate must be facing downwards.



- Apply grease to faucet O-rings.
 - Install faucet by easing onto mounting block. (4 O-rings spare in kit.)



- With locking screws supplied tighten mounting plate.
 - Turn on the water and do a pressure test.



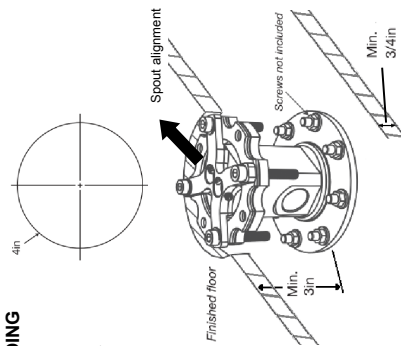
- Apply a silicone bead around base behind cover on finished floor for seal.
 - Slide cover over mounting.

INSTALLATION INSTRUCTIONS

ROHL COUNTRY / MODERN FREE STANDING TUB FILLER

Concrete subfloor installations

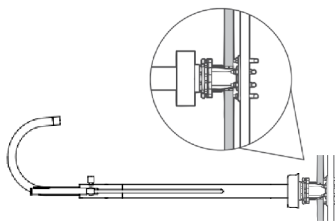
When you have a concrete or solid surface, that requires pre fabrication or foundation drilling installation, consider these instructions.



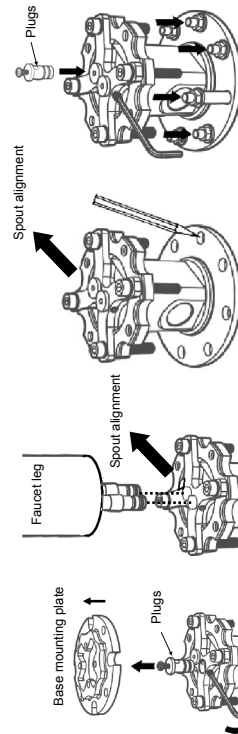
Minimum requirements:
4 inches - Floor cut-out.
3 inches - Base of mounting block to the finished floor.

¾ inch - Concrete subfloor.

Note: Mounting block screws not supplied.

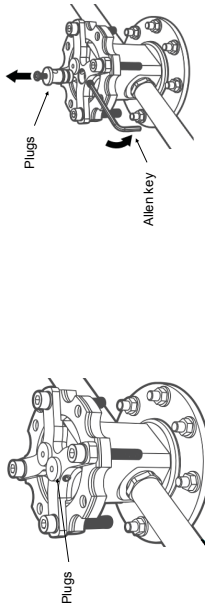


Note: The water connections on mounting block are aligned with the spout. Back port for hot inlet, front port for cold inlet.

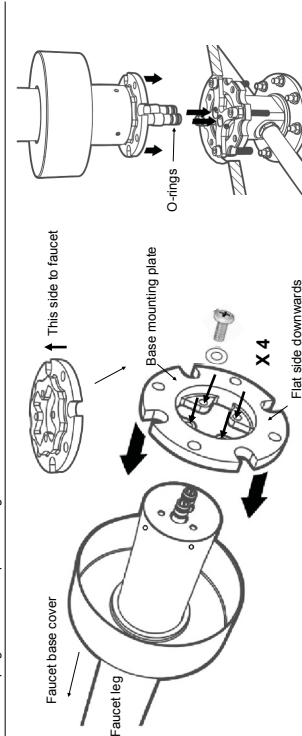


2. Verify the distance of the faucet from the bath to insure that the water will flow into the bath and mark out for drill holes.
 Note: Check that the water connections on mounting block are aligned with the spout.

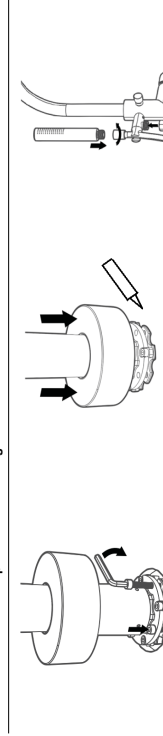
- Install mounting block to concrete subfloor. (Floor anchors not supplied.)
- Verify subfloor is level.
- Reinstall plugs and grub screws.
- Note: Push plug in first then install grub screw.



- Connect water supply to mounting block on the sub floor with **hot on the left, cold on the right**.
 - Check for leaks.
 - Confirm the finish floor height.
 Note: There are no shutoffs, but the hot and cold supplies do have plugs to remain in place during construction.
- Note: When laying the finish floor, do not cover mounting bolts above and below the rough. "To install the trim". After the finish floor is in place: Shut off the water supply.
 - Remove plugs and grub screws.



- Slide the chrome base cover onto faucet.
 - Screw the base mounting plate to faucet base with the 4 screws and washers supplied and tighten.
 Note: Flat side of plate must be facing downwards.
- Slide the chrome base cover onto faucet.
 - Screw the base mounting plate to faucet base with the 4 screws and washers supplied and tighten.
 Note: Flat side of plate must be facing downwards.



- With locking screws supplied tighten mounting plate.
 - Turn on the water and do a pressure test.
- Apply a silicone bead around base behind cover on finished floor for seal.
 - Slide cover over mounting.