

Features

- Color and style matched to Profiles collection
- Modular lighting can be ganged with Profiles Medicine Cabinets, Profiles Mirrors, and M/PL Cabinets
- Available in Warm White (2700K), Natural White (4000K) and Variable color temperature (adjustable 2700K to 5600K).
- Light direction and output provides bright even task lighting
- Dimmable LED task lighting to 1%
- Energy efficient LED lighting:

| Model Color | 3 | 4 | V |
|-----------------|------|------|-----------|
| Kelvin | 2700 | 4000 | 2700-5600 |
| CRI | 90+ | 90+ | 90+ |
| Lumens* | 1021 | 1160 | 1025 |
| Lux**† | 820+ | 840+ | 820-1680+ |
| R9 Value* | 60+ | 60+ | 60-80+ |
| Foot-candles**† | 75+ | 75+ | 75-150+ |

* Based on a measurement of subset of sizes, shapes and lighting styles
 † Measured at 18" from center of the light

Construction

- Aluminum Chassis
- Satin anodized aluminum body
- Lens attaches with set screw - top and bottom
- Internal light diffuser evenly distributes light
- Housing w/ Gasket - Matches cabinet color
- Standard knock out for 1/2" cable connector
- Wired internally - Front access serviceability
- MGKIT for easy mounting to Robern cabinets

Codes/Standards Applicable

ETL certified (damp locations) to:

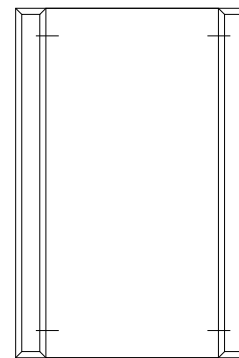
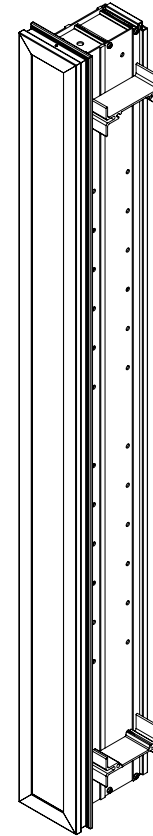
- UL 1598
- CSA C22.2 No. 250.0

Dimensions

Height: 39-3/8" (1000 mm)
 Width: 3-1/2" (89 mm)
 Depth: 4-11/16" (119 mm) When surface mounted
 15/16" (24 mm) When recessed

Accessories

- Surface-Mount Kit (MSMK__D_P)
- Ganging Kit (MGKIT) - for ganging with cabinets
- Ganging Kit (PMGKIT____) - for ganging with Profiles Mirrors



Typical Ganged Arrangement

Note: This fixture adds 3-1/2" (89 mm) per light to the overall rough-in width.

Model Number Key

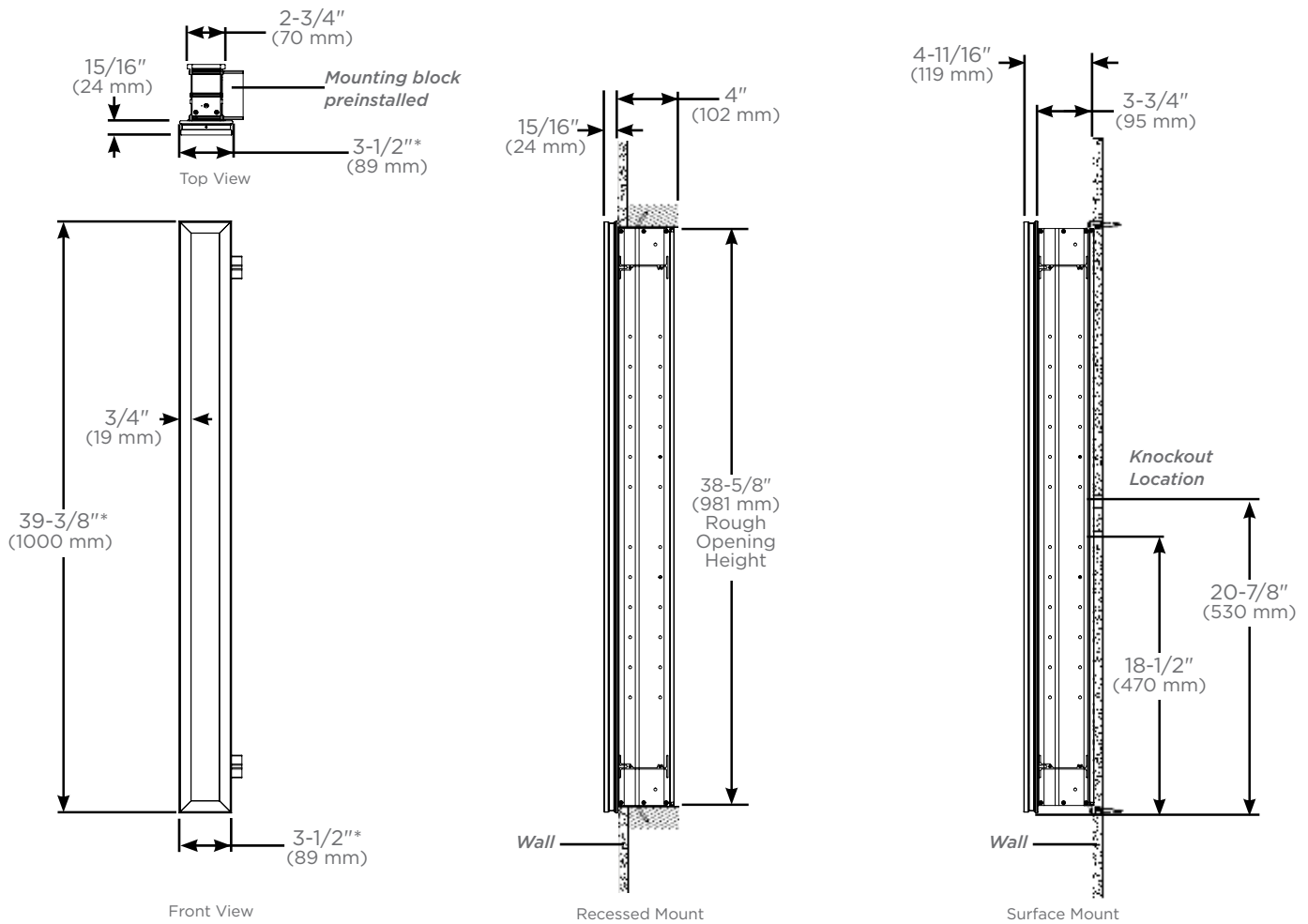
| Profiles | Width | Height | Frame Width | Lamp Type | Accent Color | Lens | Finish | Ballast Type | Color |
|----------|--------------|--------------|-------------|-----------|--------------|----------------|--|--------------|--|
| PL | 3.5 (3-1/2") | 40 (39-3/8") | T (3/4") | L (LED) | S (Silver) | C (Clear Lens) | 76 (Chrome) 77 (Polished Nickel) 82 (Matte Gold) 83 (Matte Black) | D (Dimmable) | 3 = 2,700K 4 = 4,000K V = Variable |

Installation

- Fixture adds 3-1/2" per light to the overall rough-in width when ganged with Profiles cabinets and/or mirrors
- Rough Opening (**light only**) - 38-5/8" H x 2-3/4" W x 4" D (981 mm H x 70 mm W x 102 mm D)
- Can be recessed or surface-mounted with 4" depth (D4) cabinets (D4 surface-mount kit required) and fully recessed with 6" depth (D6) cabinets
- Ganging kit required if used to mount with multiple cabinets - light comes with ganging hardware on one side

Electrical System

- 120 VAC 60HZ 23W (46W for "V" Model)
- Class 2- Dimming Transformer
- Line voltage dimming with specified dimmer control
- (US) ETL and (Can) ETL Listed for Damp Locations
- Field wire location as shown in drawing
- Two 1/2" conduit (Ø 7/8" actual) electrical knockout locations shown below
- Robern recommends the Maestro® C•L® Dimmers from LUTRON®, Model # MACL-153M.
- "V" Model requires 2 dimmers and **3 wire + ground** cable



*Lens dimensions are 1/8" (3 mm) smaller than light body