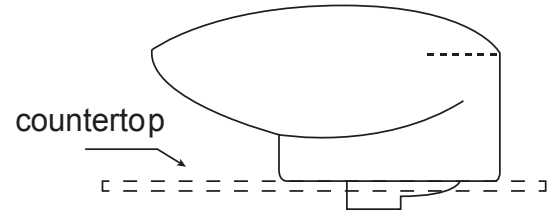


Note : For Ceramic Sinks with overflow & Faucet Deck

Step 1 : Position countertop opening to ensure clearance between the lavatory, faucet and backsplash. Position and drill a 6-11/16” hole in the countertop

See Figure 1.

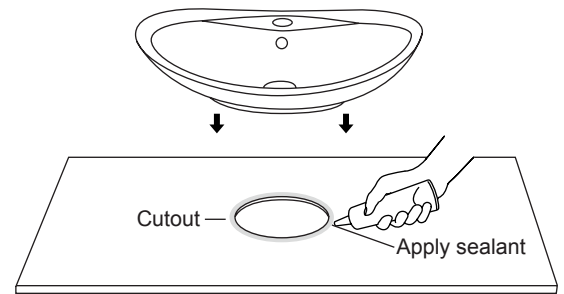
Figure 1.



Step 2 : Apply a continuous bead of silicon sealant (Not Provided) around the edge of the countertop cutout. Position the lavatory on the countertop. Press down firmly on the lavatory. Apply a thin bead of silicone sealant (Not Provided) where the lavatory meets the countertop

See Figure 2.

Figure 2.

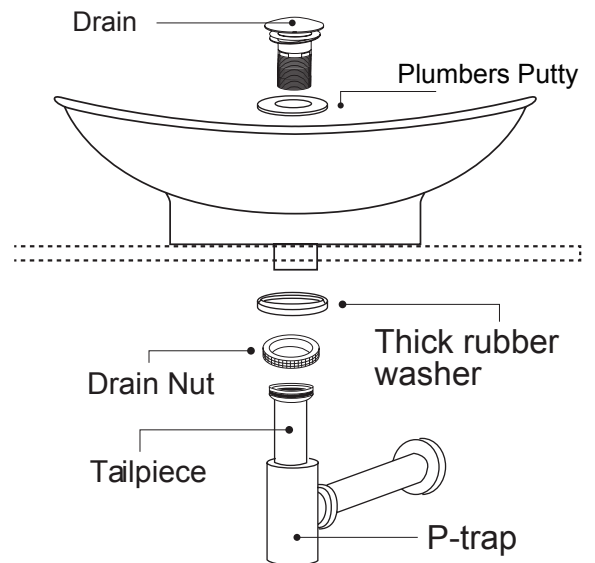


Step 3 : If using RONBOW drain, place a generous portion of plumbers’ putty (Not Provided) under drain cap and insert whole drain body inside the bowl and through the countertop

(There may be a small beveled rubber washer packaged with your drain, please discard this and use plumbers’ putty instead)

See Figure 3.

Figure 3.



Step 4 : From under the drain, insert the thick rubber washer and screw on and tighten the metal nut. Remove excess plumbers’ putty

See Figure 3.

Step 5 : Connect the trap to the drain. Run water into the lavatory. Check all connections for leaks