

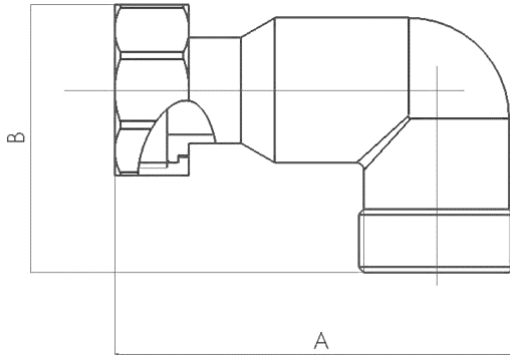
PRODUCT SUBMITTAL 238

PRO-BALANCE Nickel Plated Brass BSPP Angle Piece



Product: PRO-BALANCE® Nickel Plated Brass BSPP Angle Piece

Date: 01 August 2021



Article No.	Description	A in (mm)	B in (mm)
316249-002	1 in. 90° Nickel Plated BSPP Angle Piece with Gasket	2.55 (65)	2.24 (57)
343632-001	1 1/4 in. 90° Nickel Plated BSPP Angle Piece with Gasket	4.21 (107)	2.83 (72)

TECHNICAL DESCRIPTION

Material	Body and components are nickel plated brass, fiber gasket
----------	---

FUNCTIONAL DESCRIPTION

For use with PRO-BALANCE or HKV manifolds in sizes indicated. Angle pieces (elbows) can be used to install PRO-BALANCE manifold isolation valves at a right angle to manifold, such as when supplying a horizontally-mounted manifold with pipes from below. Angle pieces include union nut and gasket.

For updates to this publication, visit na.rehau.com/resourcecenter

The information contained herein is believed to be reliable, but no representations, guarantees or warranties of any kind are made as to its accuracy, suitability for particular applications or the results to be obtained therefrom. Before using, the user will determine suitability of the information for user's intended use and shall assume all risk and liability in connection therewith.

© 2021 REHAU