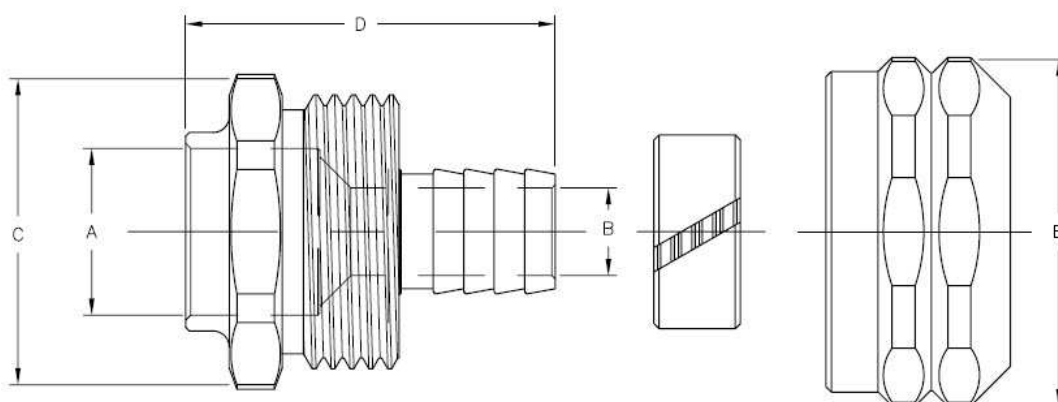


PRODUCT SUBMITTAL 315

Product: RAUPEX® Compression Nut Fitting - Copper Adapters

Date: 02 July 2012 (supersedes 18 June 2010)



Article No.	Nominal Size	Dimensions in (mm)				
		A	B	C	D	E
260997	1/2 in. RAUPEX x 1/2 in. C Female (Sweat)	.629 (16.0)	.331 (8.4)	1.155 (29.3)	1.396 (35.5)	1.308 (33.3)
260347	3/4 in. RAUPEX x 3/4 in. C Female (Sweat)	.798 (20.3)	.510 (12.9)	1.312 (33.3)	1.664 (42.3)	1.500 (38.0)
260467	1 in. RAUPEX x 1 in. C Female (Sweat)	1.128 (28.6)	.717 (18.2)	1.961 (49.8)	1.846 (47.3)	1.875 (47.6)

TECHNICAL DESCRIPTION

Specification	ASTM F 877
Material	Brass
Certifications	ASTM F 877 / CSA B 137.5

FUNCTIONAL DESCRIPTION

RAUPEX split-ring compression nut brass fittings are machined brass. Integral fitting/insert design provides positive clamping and sealing action with split compression ring. Copper adapter fittings connect RAUPEX pipe to copper pipe in sizes indicated. Make solder connection before connecting to RAUPEX pipe.

For updates to this publication, visit na.rehau.com/resourcecenter

The information contained herein is believed to be reliable, but no representations, guarantees or warranties of any kind are made as to its accuracy, suitability for particular applications or the results to be obtained therefrom. Before using, the user will determine suitability of the information for user's intended use and shall assume all risk and liability in connection therewith.

© 2012 REHAU