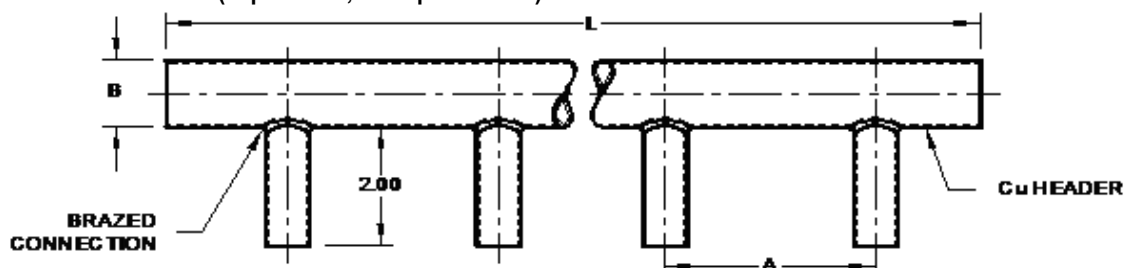


# PRODUCT SUBMITTAL 261

**Product:** Header Manifold  
**Date:** 14-October-09 (supersedes, 20-September-07)



Article No.	Nominal Header Size in.	Nominal Outlet Size in. , # outlets	A On-center Spacing in. (cm)	B OD in. (cm)	L Length in. (cm)
250810	1	1/2, 24	3.0 (7.62)	1.125 (2.85)	72.0 (183)
250817	1	3/4, 24		1.125 (2.85)	
250820	1 1/4	1/2, 24		1.375 (3.5)	
250827	1 1/4	3/4, 24		1.375 (3.5)	
250829	1 1/2	1/2, 24		1.625 (4.1)	
250830	1 1/2	3/4, 24		1.625 (4.1)	
250839	2	1/2, 24		2.125 (5.4)	
250840	2	3/4, 24		2.125 (5.4)	
250850	2	1, 18	4.0 (10.1)	2.125 (5.4)	

### TECHNICAL DESCRIPTION

<b>Material</b>	Header: Type L Copper with open ends, Outlet: Type L Copper, high-temp. brazed (lead-free) into header, Brazing alloy: Silver solder
-----------------	--

Nominal Header Size in.	Max. Flow Rate based on 8 fps (2.4 l/m)
1	20 GPM (76 l/m)
1 1/4	32 GPM (121 l/m)
1 1/2	44 GPM (167 l/m)
2	75 GPM (284 l/m)

### FUNCTIONAL DESCRIPTION

Manifolds are type L copper with open ends, in sizes indicated.

Copper outlets are high-temperature brazed (lead-free) into headers. Each manifold is 72" (183 cm) long with 24 outlets at 3" on-center, except the 2" x 1" manifold (Art. 250850) which has 18 outlets at 4" on-center. Outlets are 2" long as shown. Manifolds can easily be cut to length by cutting in the center between two outlets. Do not exceed maximum flow rates listed above.

Use with REHAU fittings and valves to assemble complete manifolds for heating applications.

For updates to this publication, visit [na.rehau.com/resourcecenter](http://na.rehau.com/resourcecenter)  
The information contained herein is believed to be reliable, but no representations, guarantees or warranties of any kind are made as to its accuracy, suitability for particular applications or the results to be obtained therefrom. Before using, the user will determine suitability of the information for user's intended use and shall assume all risk and liability in connection therewith. To the extent permitted by law, REHAU EXPRESSLY DISCLAIMS ALL IMPLIED WARRANTIES, INCLUDING BUT NOT LIMITED TO, ANY IMPLIED WARRANTIES OF MERCHANTABILITY OR OF FITNESS FOR A PARTICULAR PURPOSE. © REHAU Incorporated 2009