

Description:

- Robinet de surface 4 morceaux pour bain avec douchette / 4-hole deck mounted bath faucet with handheld shower
- Construction en laiton massif / Solid brass construction
- Cartouche de céramique / Ceramic cartridge

Débit / Flow rate:

- 17 L/min (3 BAR) - 4.5 gpm (45 PSI)

Finis disponibles / Available finish:

- CC = Chrome
- NN = Nickel PVD

Connection:

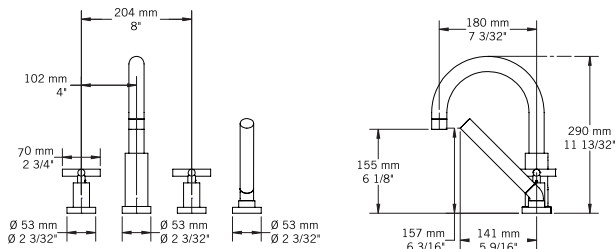
- 1/2"

Certification:

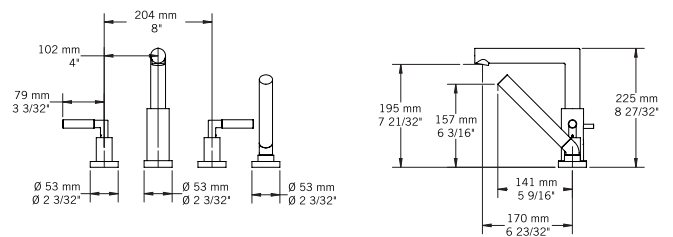
- ASME A112.18.1/CSA B125.1



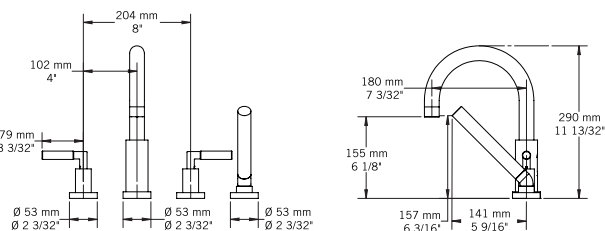
Alex	RCA24A CC	Hadria	RLA24H CC
Billie	RCA24B CC	Jawa	RAF24J CC
Dana	RCA24D CC RCA24D NN	Kali	RAF24K CC RAF24K NN
Evita	RLA24E CC	Qabil	RAR24Q CC
Gabriella	RLA24G CC	Saida	RAR24S CC



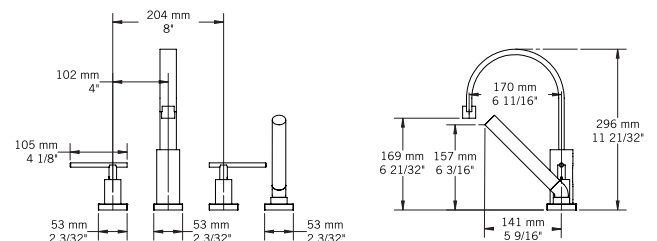
ALEX - RCA24A



BILLIE - RCA24B

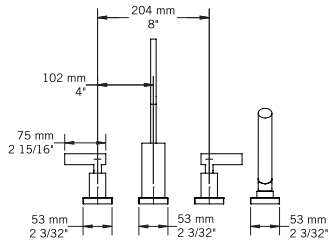


DANA - RCA24D

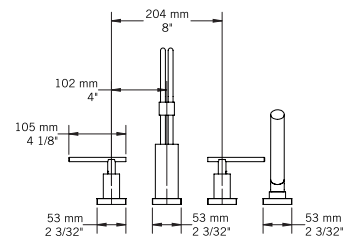
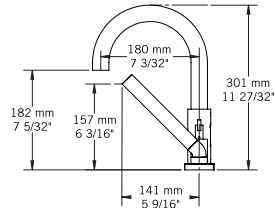


EVITA - RLA24E

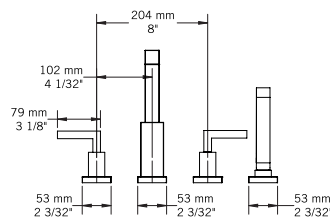
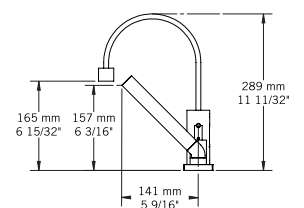
collection VISO - 4pcs



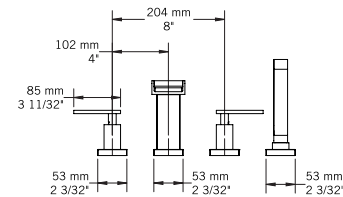
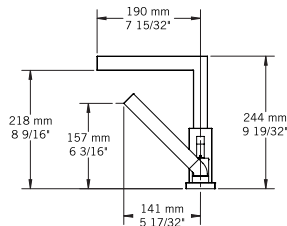
GABRIELLA - RLA24G



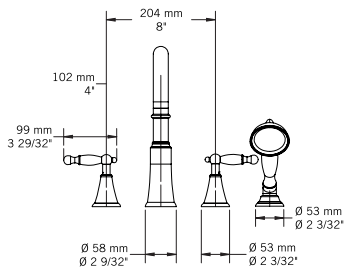
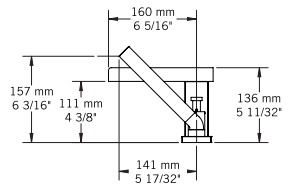
HADRIA - RLA24H



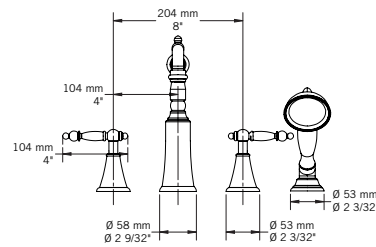
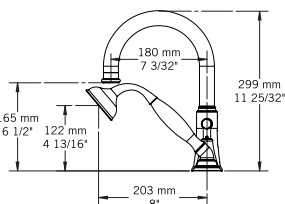
JAWA - RAF24J



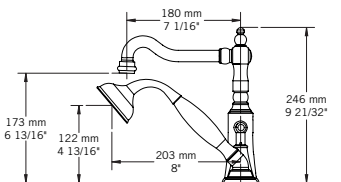
KALI - RAF24K



QABIL - RAR24Q



SAIDA - RAR24S

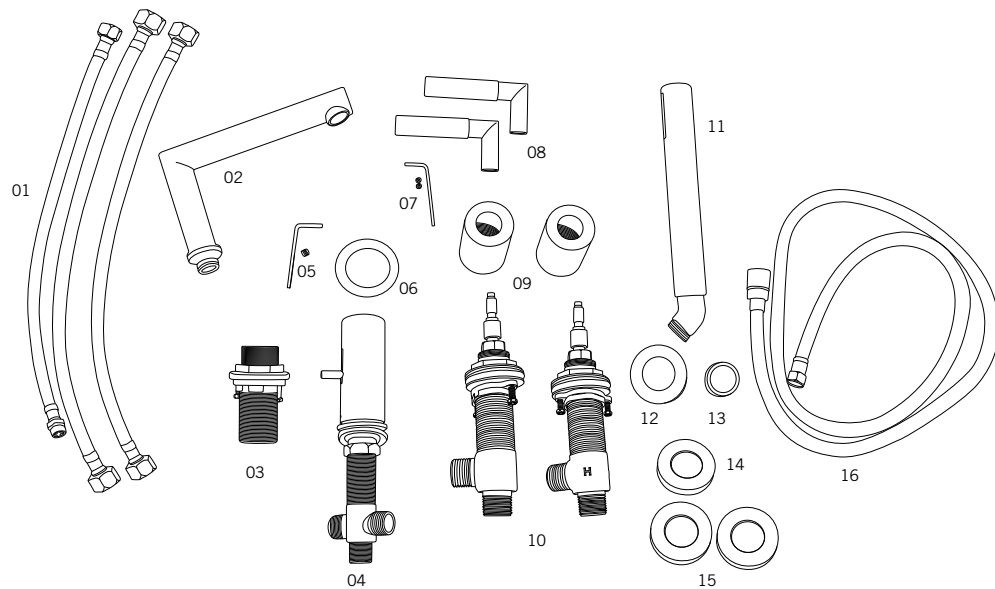


Liste complète des pièces de votre robinet.
Complete parts list of your faucet.

LISTE DES PIÈCES / PARTS LIST

NO.	DESCRIPTIONS
01	Boyaux flexibles / Flexible hoses
02	Bec / Spout
03	Base support de douche / Hand shower holder base
04	Base du bec et déviateur / Spout base and diverter
05	Clé et vis à tête hexagonale (bec) / Hex screw and nut (spout)
06	Joint d'étanchéité / Sealing gasket
07	Clé et vis (poignées) / Hex screw and nut (handles)
08	Poignées / Handles

NO.	DESCRIPTIONS
09	Corps poignées / Handle bodies
10	Bases poignées / Handle bases
11	Douchette / Hand shower
12	Bride de support douche / Hand shower holder flange
13	Anneau de support de douche / Hand shower holder ring
14	Bride d'étanchéité mitigeur / Mixer sealing flange
15	Brides poignées / Handle flanges
16	Flexible douche / Hand shower flexible hose



GARANTIE

La garantie sur les produits Rubi s'applique à tout défaut de fabrication ou au matériel. La garantie est valide pour le premier propriétaire du produit et celle-ci n'est pas transférable. Certaines modalités et conditions s'appliquent, référez-vous à la section Garantie pour de plus amples informations : <https://rubi.ca/fr-CA/garantie>

WARRANTY

The warranty on Rubi products applies to any manufacturing defect or material. The warranty is valid for the first owner of the product and is not transferable. Terms and conditions apply, refer to the Warranty section for more information: <https://rubi.ca/en-CA/garanty>