

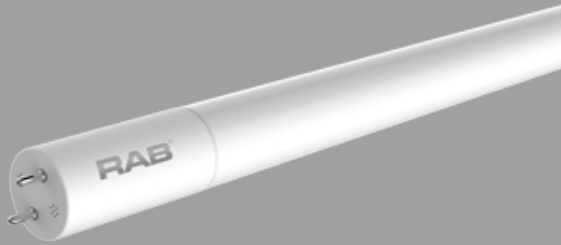


Project:

Type:

Prepared By:

Date:



UPC: 019813751863



Features and Benefits

- Replacement for conventional fluorescent T8 and T12 linear tubes
- Integral Driver enables lamp to be wired directly to line voltage without need for an external driver or ballast
- Single ended and double ended wiring method
- Works with non-shunted sockets and shunted sockets.
- Approximately 50% more energy efficient when compared to Fluorescent T8 lamps
- 50,000 hour Lifespan.
- Rated for use in enclosed and open fixtures in dry or damp locations
- Diffused frosted lens will maintain the same light quality over time
- Instant on full brightness
- Environmentally friendly, no mercury used
- NSF Listed: NSF/ANSI Standard 2 - Food Equipment - Splash Zone (Not for Direct Food Zone without additional fixture considerations)
- Internal thermal fuse for added safety
- Emergency back up available

Technical Specifications

Performance

Product Type:

Linear

Input Wattage:

17W

Lumens (Nominal):

2200 lm

Efficacy:

129 lm/W

L70 Lifespan:

50,000 Hours

Wattage Equivalency:

32W Fluorescent

Construction

Material:

Glass

Bulb Shape:

T8

Nominal Length:

4 FT

Finish:

Frosted

Base Type:

G13

For Use Outdoors in Open Fixtures:

No

LED Characteristics

Color Temperature:

5000K Daylight

Color Accuracy (CRI):

82 CRI

Electrical

THD:

<20%

Power Factor:

0.9

Operating Temperature:

-20°C - 45°C (-4°F - 113°F)



Technical Specifications (continued)

Electrical

Dimming:

No

Input Voltage:

120-277V AC

Operating Frequency:

50/60Hz

Other

Warranty:

RAB warrants that our LED products will be free from defects in materials and workmanship for a period of five (5) years from the date of delivery to the end user, including coverage of light output, color stability, driver performance and fixture finish. RAB's warranty is subject to all terms and conditions found at rablighting.com/warranty.

Installation

Installation Type:

Type B, Single or Double Ended wiring

Compliance

UL Recognized:

Yes

UL Classified:

Yes

NSF Listed:

Meets NSF/ANSI standards for use in Food Zone (non-contact), Splash, and Non-Food Zones. Tube guard required in open fixtures.

DLC Model Number:

T8-17-48G-850-SD-BYP

California Energy Commission (CEC) Status:

Lawful for sale in California

Application:

Suitable for damp locations and totally enclosed fixtures.

DLC Listed:

This product is on the Design Lights Consortium (DLC) Qualified Products List and is eligible for rebates from DLC Member Utilities. Designed to meet DLC 5.1 requirements.

DLC Product Code: PRMKONCV

Optical

Beam Angle:

210°

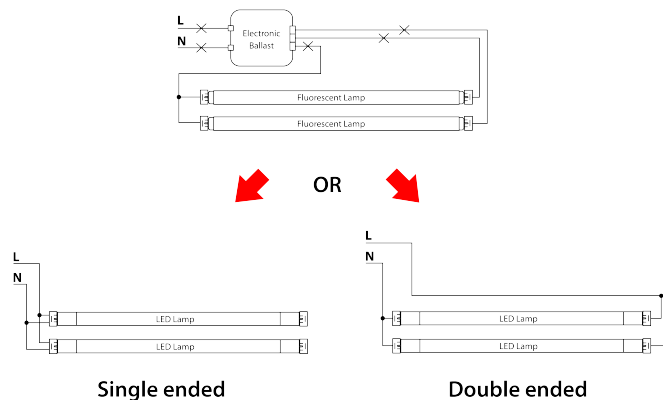
Minimum Compartment Size

Length x Width x Height [in]	Lamp Quantity
47.8 x 23.8 x 3.0	4

Case and Pallet Dimensions

	QTY	LENGTH (in)	WIDTH (in)	HEIGHT (in)
CASE	25	48.8	5.9	5.9
PALLET	1200	49.2	39.4	46.1

Wiring Diagram





Dimension

