

LagosSeries ADJUSTABLE LINEAR DRAIN 3" HIGH FLOW

Adjustable Linear Drain:

Materials:

Grate: Marine Grade Stainless Steel 316, Thickness: 16 gauge.

Base: PVC plastic 3mm

Features:

- Removable Grate: Can be completely removed for easy cleaning and maintenance.

Installation Methods

- Designed for compatibility with: Traditional waterproofing methods pair with our High Flow Clamp-Down Drain for easy installation.

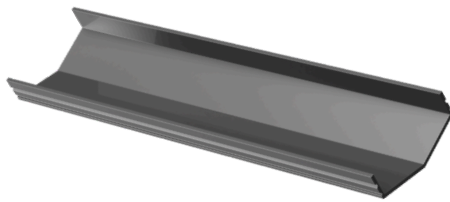


Kit Includes:

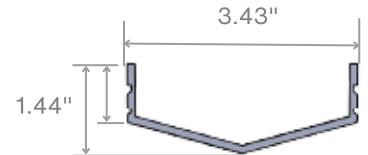
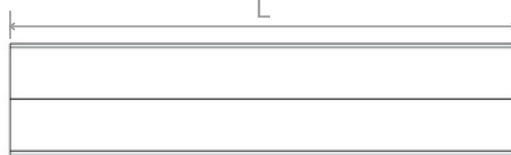
- Base
- Outlet**
- End Cap
- Grate*
- Trims
- Lifting Key
- Leveling Feet
- Threaded Nipple
- Stainless Steel Cutting Blade

Specifications

Base

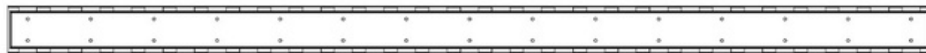


L:
32"
44"
56"
68"
92"



Grate*

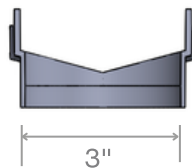
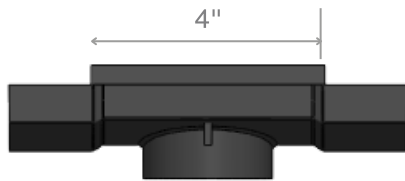
36" / 48" / 60" / 72" / 96"



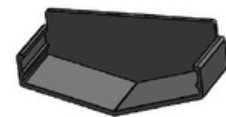
*

96" kit has two 48" grates.
72" kits in black, gold, luxe gray, champagne, and bronze have two 36" grates.

Outlet



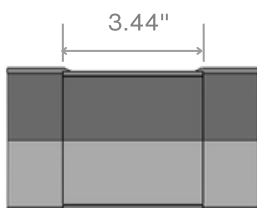
End Cap



** 72" and 96" Kits include two outlets.

Optional Components:

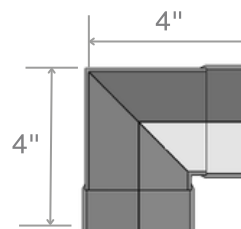
Joiner



A Joiner is needed to connect kits to build the desired length. It is sold separately. It is not part of the kit.

SKU: 88.JOINER ●

Corner



A corner is needed when connecting two channels at a 90-degree angle. Corner is an accessory, it is sold separately. It is not part of the kit.

SKU: 88.601.COR ●

LagosSeries ADJUSTABLE LINEAR DRAIN 2"

Complete Kits SKU: MIST (TILE-IN)

	36"	88.630.36HF ST	●
	48"	88.630.48HF ST	●
	60"	88.630.60HF ST	●
	72"	88.630.72HF ST	●
	96"	88.630.96HF ST	●
	36"	88.630.36HF PS	●
	48"	88.630.48HF PS	●
	60"	88.630.60HF PS	●
	72"	88.630.72HF PS	●
	96"	88.630.96HF PS	●
	36"	88.630.36HF BK	●
	48"	88.630.48HF BK	●
	60"	88.630.60HF BK	●
	72"	88.630.72HF BK	●
	96"	88.630.96HF BK	●
	36"	88.630.36HF GD	●
	48"	88.630.48HF GD	●
	60"	88.630.60HF GD	●
	72"	88.630.72HF GD	●
	96"	88.630.96HF GD	●
	36"	88.630.36HF BZ	●
	48"	88.630.48HF BZ	●
	60"	88.630.60HF BZ	●
	72"	88.630.72HF BZ	●
	96"	88.630.96HF BZ	●
	36"	88.630.36HF BZ	●
	48"	88.630.48HF BZ	●
	60"	88.630.60HF BZ	●
	72"	88.630.72HF BZ	●
	96"	88.630.96HF BZ	●
	36"	88.630.36HF BZ	●
	48"	88.630.48HF BZ	●
	60"	88.630.60HF BZ	●
	72"	88.630.72HF BZ	●
	96"	88.630.96HF BZ	●

Note: Mist Tile-In grate accepts flooring material up to 3/8" thickness.