

LagosSeries ADJUSTABLE LINEAR DRAIN 2"

Adjustable Linear Drain:

Materials:

Grate: Marine Grade Stainless Steel 316, Thickness: 16 gauge

Base: PVC plastic 3mm

Features:

- Removable Grate: Can be completely removed for easy cleaning and maintenance.
- Hair Strainer Basket Included: Fits inside the drain to collect hair and debris, helping prevent clogged pipes.

Installation Methods

- Designed for compatibility with:
- Traditional waterproofing methods pair with our 2" Clamp-Down Drain for easy installation.

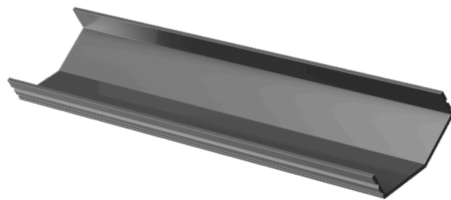


Kit Includes:

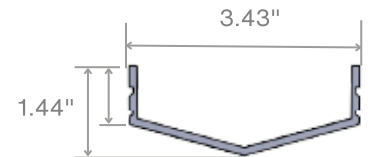
- Base
- Outlet**
- End Cap
- Grate*
- Trims
- Hair Strainer
- Lifting Key
- Leveling Feet
- Threaded Nipple
- Stainless Steel Cutting Blade

Specifications

Base

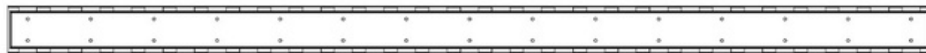


L:
32"
44"
56"
68"
92"



Grate*

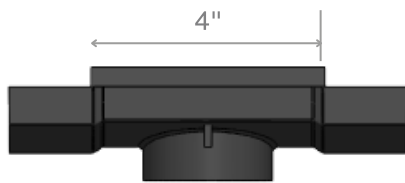
36" / 48" / 60" / 72" / 96"



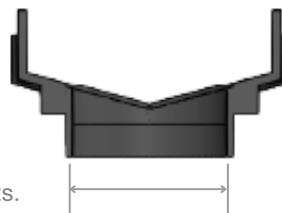
*

96" kit has two 48" grates.
72" kits in black, gold, luxe gray, champagne, and bronze have two 36" grates.

Outlet

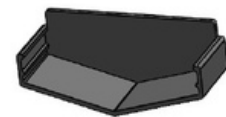


** 72" and 96" Kits include two outlets.



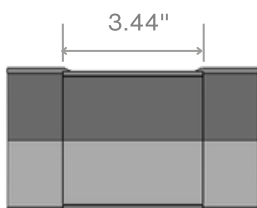
2"

End Cap



Optional Components:

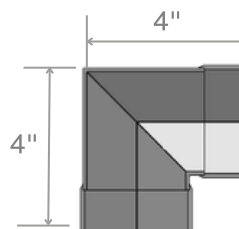
Joiner



A Joiner is needed to connect kits to build the desired length. It is sold separately. It is not part of the kit.

SKU: 88.JOINER ●

Corner









A corner is needed when connecting two channels at a 90-degree angle. Corner is an accessory, it is sold separately. It is not part of the kit.

SKU: 88.601.COR ●

LagosSeries ADJUSTABLE LINEAR DRAIN 2"

Complete Kits SKU: MIST (TILE-IN)

	36"	88.630.36 ST	●
	48"	88.630.48 ST	●
	60"	88.630.60 ST	●
	72"	88.630.72 ST	●
	96"	88.630.96 ST	●
	36"	88.630.36 PS	●
	48"	88.630.48 PS	●
	60"	88.630.60 PS	●
	72"	88.630.72 PS	●
	96"	88.630.96 PS	●
	36"	88.630.36 BK	●
	48"	88.630.48 BK	●
	60"	88.630.60 BK	●
	72"	88.630.72 BK	●
	96"	88.630.96 BK	●
	36"	88.630.36 GD	●
	48"	88.630.48 GD	●
	60"	88.630.60 GD	●
	72"	88.630.72 GD	●
	96"	88.630.96 GD	●
	36"	88.630.36 BZ	●
	48"	88.630.48 BZ	●
	60"	88.630.60 BZ	●
	72"	88.630.72 BZ	●
	96"	88.630.96 BZ	●
	36"	88.630.36 CH	●
	48"	88.630.48 CH	●
	60"	88.630.60 CH	●
	72"	88.630.72 CH	●
	96"	88.630.96 CH	●
	36"	88.630.36 LG	●
	48"	88.630.48 LG	●
	60"	88.630.60 LG	●
	72"	88.630.72 LG	●
	96"	88.630.96 LG	●

Note: Mist Tile-In grate accepts flooring material up to 3/8" thickness.