

LagosSeries ADJUSTABLE LINEAR DRAIN 3" HIGH FLOW

Adjustable Linear Drain:

Materials:

Grate: Marine Grade Stainless Steel 316, Thickness: 16 gauge

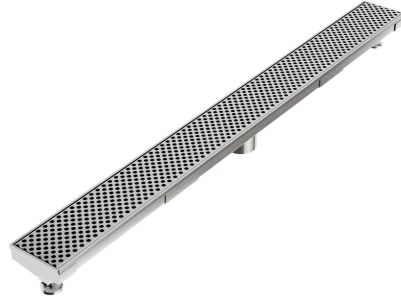
Base: PVC plastic 3mm

Features:

- Removable Grate: Can be completely removed for easy cleaning and maintenance.

Installation Methods

- Designed for compatibility with:
- Traditional waterproofing methods pair with our High Flow Clamp-Down Drain for easy installation.

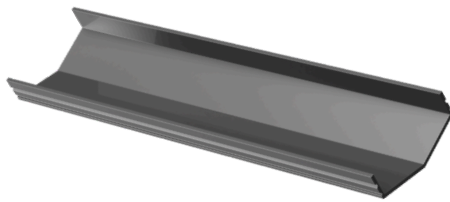


Kit Includes:

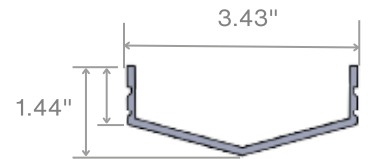
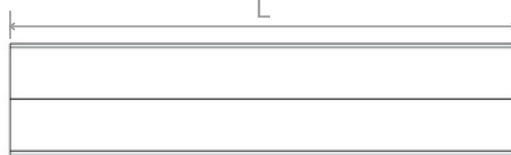
- Base
- Outlet**
- End Cap
- Grate*
- Trims
- Lifting Key
- Leveling Feet
- Threaded Nipple
- Stainless Steel Cutting Blade

Specifications

Base



L:
32"
44"
56"
68"
92"

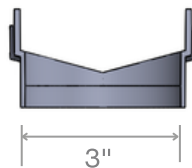
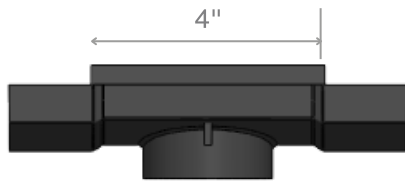


Grate

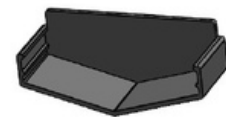
36" / 48" / 60" / 72" / 96"



Outlet



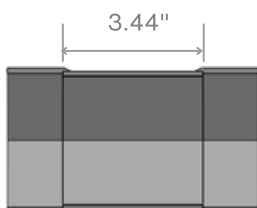
End Cap



** 72" and 96" Kits include two outlets.

Optional Components:

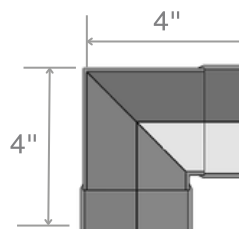
Joiner



A Joiner is needed to connect kits to build the desired length. It is sold separately. It is not part of the kit.

SKU: 88.JOINER ●

Corner

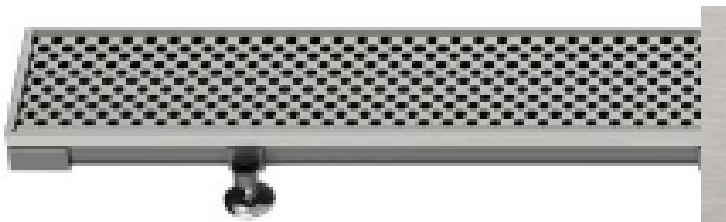


A corner is needed when connecting two channels at a 90-degree angle. Corner is an accessory, it is sold separately. It is not part of the kit.

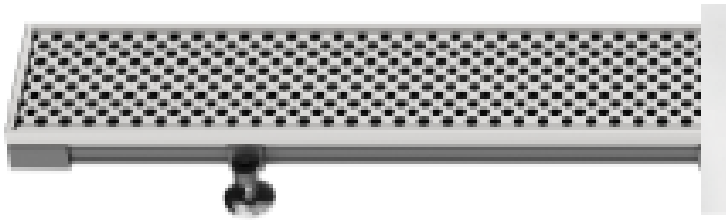
SKU: 88.601.COR ●

LagosSeries \ ADJUSTABLE LINEAR DRAIN 3" HIGH FLOW

Complete Kits SKU: PERFORATED



36"	88.620.36HF ST	<input type="radio"/>
48"	88.620.48HF ST	<input type="radio"/>
60"	88.620.60HF ST	<input type="radio"/>
72"	88.620.72HF ST	<input type="radio"/>
96"	88.620.96HF ST	<input type="radio"/>



36"	88.620.36HF PS	<input type="radio"/>
48"	88.620.48HF PS	<input type="radio"/>
60"	88.620.60HF PS	<input type="radio"/>
72"	88.620.72HF PS	<input type="radio"/>
96"	88.620.96HF PS	<input type="radio"/>