

# LagosSeries ADJUSTABLE LINEAR DRAIN 3" HIGH FLOW

## Adjustable Linear Drain:

### Materials:

Grate: Marine Grade Stainless Steel 316, Thickness: 8 gauge for Edge Bars and 9 gauge for Inside Bars.  
Base: PVC plastic 3mm

### Features:

- Removable Grate: Can be completely removed for easy cleaning and maintenance.

### Installation Methods

- Designed for compatibility with:
- Traditional waterproofing methods pair with our High Flow Clamp-Down Drain for easy installation.

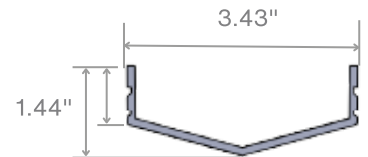
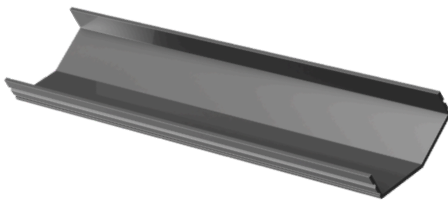


### Kit Includes:

- Base
- Outlet\*\*
- End Cap
- Grate\*
- Trims
- Lifting Key
- Leveling Feet
- Threaded Nipple
- Stainless Steel Cutting Blade

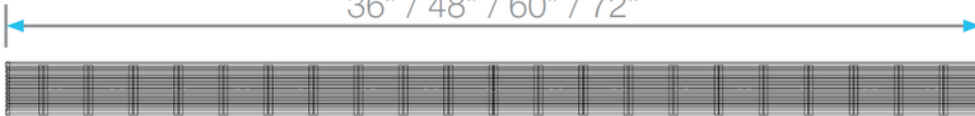
## Specifications

### Base



### Grate\*

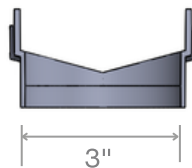
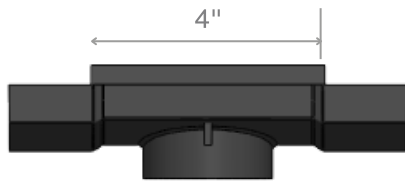
36" / 48" / 60" / 72"



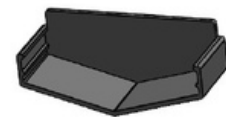
\*

96" kit has two 48" grates.  
72" kits in black, gold, luxe gray, champagne, and bronze have two 36" grates.

### Outlet



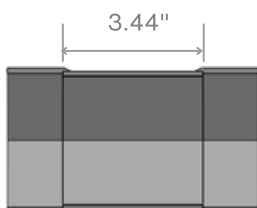
### End Cap



\*\* 72" and 96" Kits include two outlets.

## Optional Components:

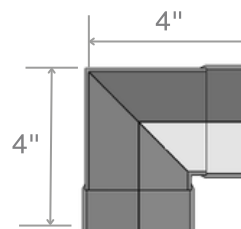
### Joiner



A Joiner is needed to connect kits to build the desired length. It is sold separately. It is not part of the kit.

SKU: 88.JOINER ●

### Corner










A corner is needed when connecting two channels at a 90-degree angle. Corner is an accessory, it is sold separately. It is not part of the kit.

SKU: 88.601.COR ●

# LagosSeries ADJUSTABLE LINEAR DRAIN 3" HIGH FLOW

Complete Kits SKU: WEDGEWIRE

	36"	88.610.36HF ST	<input type="checkbox"/>
	48"	88.610.48HF ST	<input type="checkbox"/>
	60"	88.610.60HF ST	<input type="checkbox"/>
	72"	88.610.72HF ST	<input type="checkbox"/>
	96"	88.610.96HF ST	<input type="checkbox"/>
	36"	88.610.36HF PS	<input type="checkbox"/>
	48"	88.610.48HF PS	<input type="checkbox"/>
	60"	88.610.60HF PS	<input type="checkbox"/>
	72"	88.610.72HF PS	<input type="checkbox"/>
	96"	88.610.96HF PS	<input type="checkbox"/>
	36"	88.610.36HF BK	<input type="checkbox"/>
	48"	88.610.48HF BK	<input type="checkbox"/>
	60"	88.610.60HF BK	<input type="checkbox"/>
	72"	88.610.72HF BK	<input type="checkbox"/>
	96"	88.610.96HF BK	<input type="checkbox"/>
	36"	33.610.36HF GD	<input type="checkbox"/>
	48"	33.610.48HF GD	<input type="checkbox"/>
	60"	33.610.60HF GD	<input type="checkbox"/>
	72"	33.610.72HF GD	<input type="checkbox"/>
	96"	33.610.96HF GD	<input type="checkbox"/>
	36"	33.610.36HF BZ	<input type="checkbox"/>
	48"	33.610.48HF BZ	<input type="checkbox"/>
	60"	33.610.60HF BZ	<input type="checkbox"/>
	72"	33.610.72HF BZ	<input type="checkbox"/>
	96"	33.610.96HF BZ	<input type="checkbox"/>
	36"	33.610.36HF CH	<input type="checkbox"/>
	48"	33.610.48HF CH	<input type="checkbox"/>
	60"	33.610.60HF CH	<input type="checkbox"/>
	72"	33.610.72HF CH	<input type="checkbox"/>
	96"	33.610.96HF CH	<input type="checkbox"/>
	36"	33.610.36HF LG	<input type="checkbox"/>
	48"	33.610.48HF LG	<input type="checkbox"/>
	60"	33.610.60HF LG	<input type="checkbox"/>
	72"	33.610.72HF LG	<input type="checkbox"/>
	96"	33.610.96HF LG	<input type="checkbox"/>

Note: Installer must verify all rough-in dimensions prior to installation and consult local and national codes. Conformity and compliance to local and national codes are the responsibility of the installer. Dimensions are subject to manufacturers tolerance and change without notice. We can assume no responsibility for use of superseded or voided data. [Contact us if you have any question at: info@qm-us.com](mailto:info@qm-us.com)