

# Milano

PTMLN5928

PTMLN5928

59" L x 27½" W x 22½" H

1 other size available

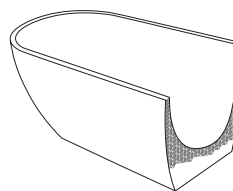
PTMLN7032

70" L x 31½" W x 22" H



Material	Acrylic
Color/Finish	White Gloss
Slope of Backrest	121°
Water Depth	15¾"
Capacity	63.4G
Weight	72.8lbs (33kg)
Shipping Weight	103.6lbs (47kg)

Freestanding acrylic bathtub  
Streamlined, high-profile one-piece design  
Includes waste and slot overflow in polished chrome  
Optional waste and slot overflow in brushed nickel



## Foam Insulation

*optional*

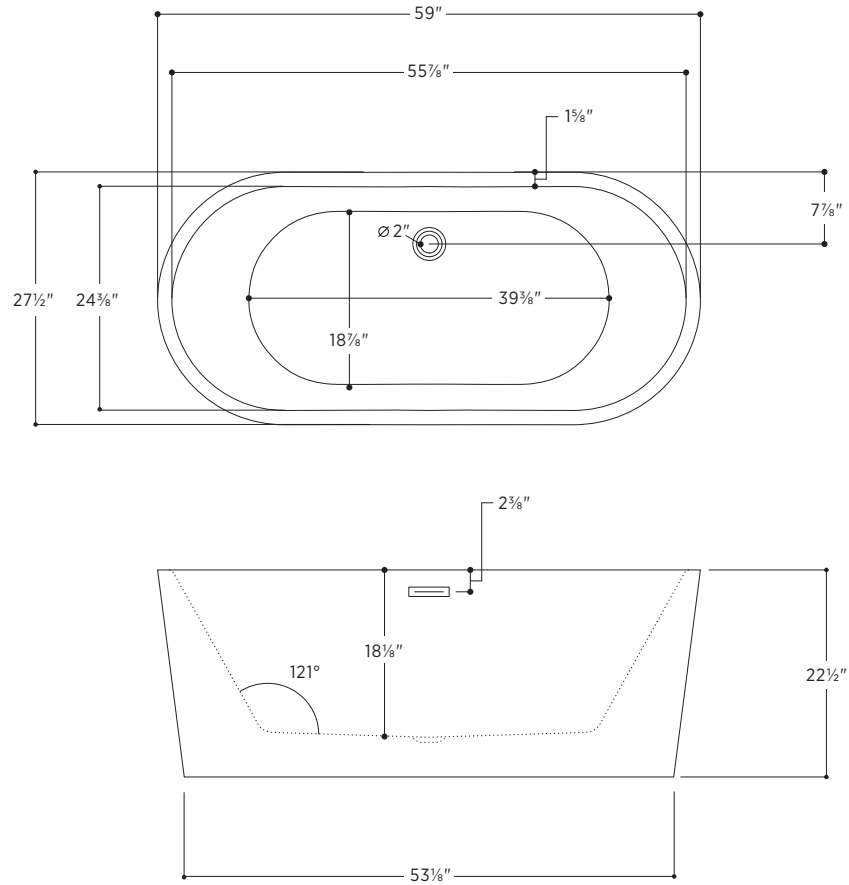
The foam insulation solidifies the tub, reduces noise level when filling, and keeps the water warm longer.

# Milano

PTMLN5928

PTMLN5928

59" L x 27½" W x 22½" H



All measurements are approximate and for comparison only. Please note that these dimensions and specifications are subject to change without notice.

Install this product according to the installation guide. Floor support under bath must provide for a minimum of 995lbs (451kg). Installation may vary. Our products must be installed by certified professionals only and according to our installation guide, as well as federal, provincial/state and local building codes and regulations.

Codes/Standards Applicable:

Meets or exceeds ANSI/ASME standard Z124.1.2  
and CAN/CSA B 45 requirements

IAPMO/UPC/cUPC

5 Year Warranty for Residential Use

