

Firenze

PTFRZ5930



59" L x 30" W x 23⁵/₈" H

other size available

PTFRZ6331 63" L x 30³/₄" W x 23⁵/₈" H

PTFRZ6732 67" L x 32¹/₄" W x 23⁵/₈" H

Freestanding acrylic bathtub

Streamlined, high-profile one-piece design

Includes polished chrome waste and slot overflow

Tailpiece is not included

Material	Acrylic
Color/Finish	White Gloss
Slope of Backrest	72°
Water Depth	16 ¹ / ₈ "
Capacity	55G
Weight	73lbs (33.1kg)
Shipping Weight	92.4lbs (41.9kg)
Warranty	5 Year Warranty for Residential Use

Codes/Standards Applicable:

Meets or exceeds ANSI/ASME standard Z124.1.2 and

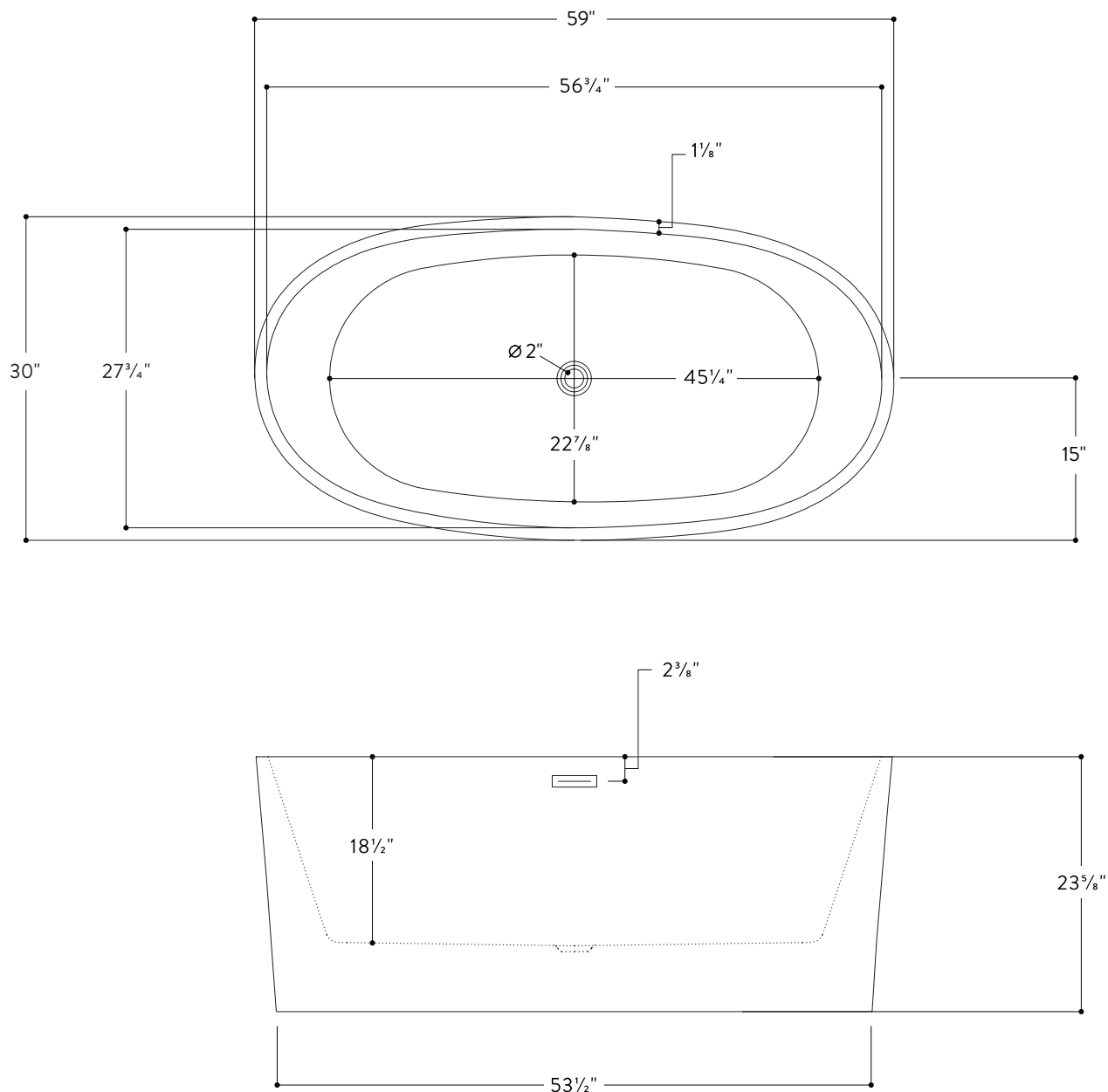
CAN/CSA B 45 requirements

IAPMO/UPC/cUPC



Install this product according to the installation guide. Floor support under bath must provide for a minimum of 1400lbs (635kg). Installation may vary. Our products must be installed by certified professionals only and according to our installation guide, as well as federal, provincial/state and local building codes and regulations.

All measurements are approximate and for comparison only. Please note that these dimensions and specifications are subject to change without notice.



All measurements are approximate and for comparison only. Please note that these dimensions and specifications are subject to change without notice.